

WEATHER

Thursday, Sept. 16	Min.	Max.	Prob.
Friday, Sept. 17	60	65	0.24
Saturday, Sept. 18	59	65	0.18
Sunday, Sept. 19	54	75	0.49
Monday, Sept. 20	57	79	0.20
Tuesday, Sept. 21	51	67	0.35
Wednesday, Sept. 22	57	68	0.16

ONE HUNDRED-SEVENTH YEAR—No. 15

12 Pages This Week

Plus 4-Page Supplement

CHELSEA, MICHIGAN, THURSDAY, SEPTEMBER 23, 1976

15c per copy

SUBSCRIPTION: \$6.00 PER YEAR

Boy's Father Faces Charges On Kidnapping

The search for David R. Siegel, 8, ended Thursday, Sept. 16, with the arrest of his father, Robert P. Siegel, in Caldwell, Kan. The elder Siegel had forcibly abducted the youngster from the South school playground in Chelsea, July 14.

David returned to the area Sunday, Sept. 19, and was placed in a foster home. According to FBI agents who found the boy and his father in an elementary school about 45 miles south of Wichita, David had not been harmed, and appeared in good health although he was described as "somewhat confused emotionally."

Prior to the abduction, the boy had been living in the Chelsea area with foster parents since December, 1974, following a ruling by Washtenaw County Circuit Court Judge William F. Ager that neither of his parents were "capable" of caring for him. The ruling came during their divorce trial.

Siegel was under a restraining order issued by Washtenaw Circuit Court forbidding him to see his son.

According to FBI spokesmen in Wichita, Siegel physically attempted to resist arrest when confronted by agents, but later recanted and allowed himself to be taken into custody.

In addition to the Michigan state warrant charging him with kidnapping, issued by Probate Judge Francis L. O'Brien July 17, Siegel will face charges of unlawful flight to avoid prosecution, local FBI Agent James Riley stated.

FBI sources said the arrest came following an alert to authorities on the boy's whereabouts from South school principal Sylvester Wojcicki. Wojcicki had been contacted by school officials in Caldwell, where David was enrolled for the fall semester. When the elder Siegel had failed to produce David's past school records, Caldwell school authorities talked to David and found he had formerly attended the Chelsea school.

From there, one agent reported, it was simply a matter of coordinating efforts and alerting the Wichita FBI office that the boy

and his father were in the area. Siegel was apprehended at the Caldwell school while David was still in class.

Siegel, who has consistently been described as having "very definite mental problems," agreed to waive a formal extradition hearing and was returned to Washtenaw county Tuesday, Sept. 21. He was arraigned the same day before 14th District Court Judge Henry Arkison. Bond was set at \$25,000, with his court examination scheduled for Sept. 27.

Washtenaw County Sheriff's Deputy Merwyn Bice and Chelsea Police Chief George Meranuk flew to Wichita Tuesday to return the elder Siegel. Meranuk described Siegel's behavior as "very cooperative, he wanted to come back and get the matter straightened out."

When asked about Siegel's reported resistance to arrest in Kansas, Meranuk replied, "Siegel said his reaction stemmed from a feeling of despondency over being located by authorities after believing he had succeeded in his efforts to remain hidden."

(Continued on page three)

Playground Work Bee Continuing

A second working bee to improve existing structures and add new equipment to the playground facilities at South school is slated for Saturday, Sept. 25, beginning at 9 a.m.

According to neighborhood sponsors, a good start towards an improved playground was made last Saturday, but more help is needed for this second working session. In addition to builders, painters and stainers are needed.

As no difficult construction is underway, the only requirement asked of volunteers is a desire to work. Anyone with questions or possible donations should call Susan Kelly, 475-8922.

Girls Swim Team Meets Milan Tuesday

The Chelsea girls varsity swimming team started its 1976 season in an intrasquad meet Thursday, Sept. 16. The team was divided into two squads. The Gold team defeated the Blue team, 85-75 in the 11-event meet.

The meet was highlighted by sophomore, Shelly Springer's 1:03.6 clocking in the 100 yard freestyle. This time was good enough to qualify her for the Girls' State Championships.

Others performing well were double winners: Shannon Springer (Shelly's sister) in the 100-yard individual medley and the 500 yard freestyle; Michelle Kamysek in the 200-yard medley relay and the 100-yard backstroke; Sheila Tarasow in the medley relay and the 50-yard freestyle; and Meg Pennington in the medley relay and the 50-yard butterfly.

Other winners were: Kim Wood in the 200-yard freestyle, Kathy Voita, diving and Karen Dresch in the 100-yard breaststroke.

The swimmers were originally scheduled to meet Woodhaven this (Continued on page five)

Professional Staff Plans Open House

The Territorial Professional Building at 9477 North Territorial Rd., Dexter, will sponsor an open house Sunday, Sept. 26, from 1-5 p.m. Hosting the event will be the Territorial Family Medical Center, Nellis Pharmacy, and Barbara and John Wehr, D.D.S.

Guests will be led on tours throughout the building, conducted by staff members at the facility. Purpose of the open house is to acquaint area residents with the variety of services offered by the new center, and introduce its employees, pharmacy, and medical staff.

The Territorial Professional Building which opened July 6 lists "family specialists" as the mainstay of its staff. Response to the facility from the community has been excellent, with the flow of patients described as "good" by workers at the medical center.

Everyone is welcome to attend the open house.

Refreshments consisting of cider doughnuts, and coffee will be served.



PP&K WINNERS: These gridders of the future exercised their ability to handle the pigskin as they won in the 8-, 9-, and 10-year-old classes of Chelsea's Punt, Pass & Kick competition Monday evening at the Chelsea High school football field. Front row, from left, are 8-year-olds Kevin Morris, first; Steve Whitesall, second; and Mark Mull, third, seated next to 9-year-olds David Steinhauer, first; Brett Knickerbocker, second; and Matt Grau,

third. Trophy holders in the 10-year-old division standing behind them, from left, are Marty Steinhauer, first; Jay Marshall, second; and David Kiel, third. The moustached fellows bringing up the rear are three Chelsea Jaycee volunteers who assisted the organizers of the event. From left, they are David Monroe, Bob Meyer, and Bob Smith.



LEG POWER AND ACCURACY on the young were the primary talents put to use by these youngsters who won the 11-, 12-, and 13-year-old age divisions in the annual Punt, Pass & Kick competition held Monday evening at the Chelsea High school football field. From left in the front row are 11-year-old finishers Dave Wojcicki, first; Will Morley, second; and Bill Merkel, third. Still proceeding from the left along the front row are 12-year-olds John Preston, first; David Soltysik, second; and John Welton, third. Winning in the 13-year-old age group, back row, from left, are Vincent Salyer, first; Mark Bauer, second, and John Rowe, third. Next to Rowe is Syl Wojcicki, South school principal who co-ordinated the event for Palmer Ford, sponsors of the competition.

Bulldog Grid Team Loses To Tecumseh

Tecumseh's Steve Phelps received the opening kick-off with an 88-yard return, to begin the offensive grind which ultimately pulverized Chelsea's varsity grid-ders, 23-0, in their season opener played Friday, Sept. 17 at Tecumseh.

The Bulldogs netted a total of 130 yards from their offense, while Tecumseh chalked up 120 yards rushing and 154 passing to sew up the victory. In first downs, Chelsea was held to a meager four, compared to Tecumseh's whopping 15.

Out of an attempted 14 passes, Tecumseh completed 8. Chelsea managed with only 2 complete for 7 thrown.

Leading the Bulldogs in yardage gained was Mike Check (24), who picked up a total of 29 yards. John Adams (22) was close behind with 27.

According to Coach Phil Bareis, Chelsea's greatest drawback in the game was a lack of hitting power on the offensive line, causing Tecumseh to benefit in line play. Defense played well, he stated, except for their passing game.

Chelsea had one fumble recovery by Bruce Stubbs (40) with no return, a pass interception by Mike Check (24) with an eight-yard return, and a second interception by Steve Pennington (42) with a four-yard return.

In a highlight of play for the home team, the Bulldog gridders drove to the Tecumseh four-yard line, aided by two passes from Anthony Houle (12) to Check and Chuck Broderick (89), but were unable to get a first down on the five-yard line, falling short by one yard.

Leading tacklers for the Chelsea team were Mark Smyth (69) with 17, and John Adams (22), 11. Tony Robards (33) had 8; James Bollinger (65), 7; Mike Check (24), 7; and George Menge (64), 6.

Tecumseh scored on a 20-yard field goal by J. Egbert, a four-yard plunge by Eggleston, and a 48-yard pass by Hans to Hughes. J. Egbert kicked in two extra points.

Chelsea will meet Courtland Friday, Sept. 24 to launch their first home game of the season.

Open House Slated At Beach School

The parents of all 6th, 7th, and 8th grade students at Beach Middle school are invited to attend an Open House at the premises Monday evening, Sept. 27, from 7-9 p.m.

Parents will be furnished with their youngster's schedule of classes and will follow the daily routine in a series of 10-minute capsule sessions.

As the intention of the evening is for parents to meet teachers and become better acquainted with the school's curriculum, anyone wishing an individual conference is asked to call the school office, 475-9131, ext. 57, to arrange an appointment for a more convenient time.

Parents planning to attend the Open House should come prepared

with their child's homeroom teacher's name and room number, and proceed to that room upon arrival. There they will pick up the class schedule followed by their child, complete the circuit of classes, and then gather in the Large Group Instruction room explanation of the 6th grade camp program.

The camp program will be of particular interest to parents of 6th graders, while parents of 7th graders may want to attend to view the slides taken at last year's camp.

Refreshments will be served in the cafeteria for 8th graders' parents during the camp program presentation, and after the program for the parents of 6th and 7th graders.

Sheriff Postill Asks Dismissal of Charges

Washtenaw County Sheriff Frederick J. Postill appeared before Circuit Court Judge Patrick J. Conlin again Thursday, Sept. 16, to file a pre-trial motion requesting dismissal of the felonious assault charge he faces stemming from a brawl at the Chelsea fairgrounds in July.

If the dismissal motion is denied, Postill, who is seeking re-election as the Democratic candidate for sheriff, will probably not be tried until after the November vote.

Neal Bush and Laurence C. Burgess, attorneys for Postill, approached the bench and requested an adjournment to the judge's chambers in filing their dismissal motion. They refused to comment on the closed-door session.

In further proceedings before the court, however, they entered a motion for particulars, and another for discovery, justified as necessary by Burgess "to properly prepare the matter for trial."

Judge Conlin, who granted both motions, ruled in the case of the

motion for particulars, that Washtenaw County Assistant Prosecutor Lynwood Noah would be limited to questioning Postill on only the indoor portion of the Chelsea altercation, which is where the alleged handcuff attack occurred.

A motion on particulars is generally granted only in cases where there has been an indictment by a grand jury or where no preliminary hearing has been held. To alter the precedent, Judge Conlin cited what he felt were special circumstances introduced through the entry of a felony charge against Postill via Deputy Basil O. Baysinger's citizen's warrant.

Baysinger had obtained the warrant in 14th District Court by posting a \$200 security bond, after Washtenaw County Prosecutor William F. Delhey refused to issue the warrant from his office. Postill's lawyers argued the amount was insufficient to cover court costs.

Judge Conlin will rule on the motion for dismissal Oct. 28.

School Budget Pared \$168,000 To Keep Millage Request Low

As the second millage vote approaches the Oct. 19 deadline, Chelsea School Board President Howard Haselschwardt offered the following public statement. "The School Board, administrators and teachers have been working together to produce a quality program on one of the tightest school budgets in the county," he stated. "Judging from the outcome of the Aug. 30 millage election, we have failed to convey this message to the voters. Perhaps it is time to be more specific about what has been done to enable us to limit our millage request to 1.5 mills."

In Haselschwardt's opinion, developing an austere school program involves much more than initiating across-the-board budget cuts. One of the first plans of attack he feels, is to find additional revenue sources that would not place a greater burden on the local property owners.

Acting with this guideline in mind, school business manager, Fred Mills, applied for six Federal CETA (Comprehensive Employment Training Act) positions. Five were approved. With these funds the district hired three custodians, a maintenance man and a clerk-receptionist. These positions were sufficient to meet the needs of the expanded school facilities. The total savings to the district was \$40,000.

The high school program was streamlined by consolidating classes and eliminating non-productive time. Pre-registration schedules were reviewed. Most elective courses with enrollment of less

Youth Recovering From Rattler Bite

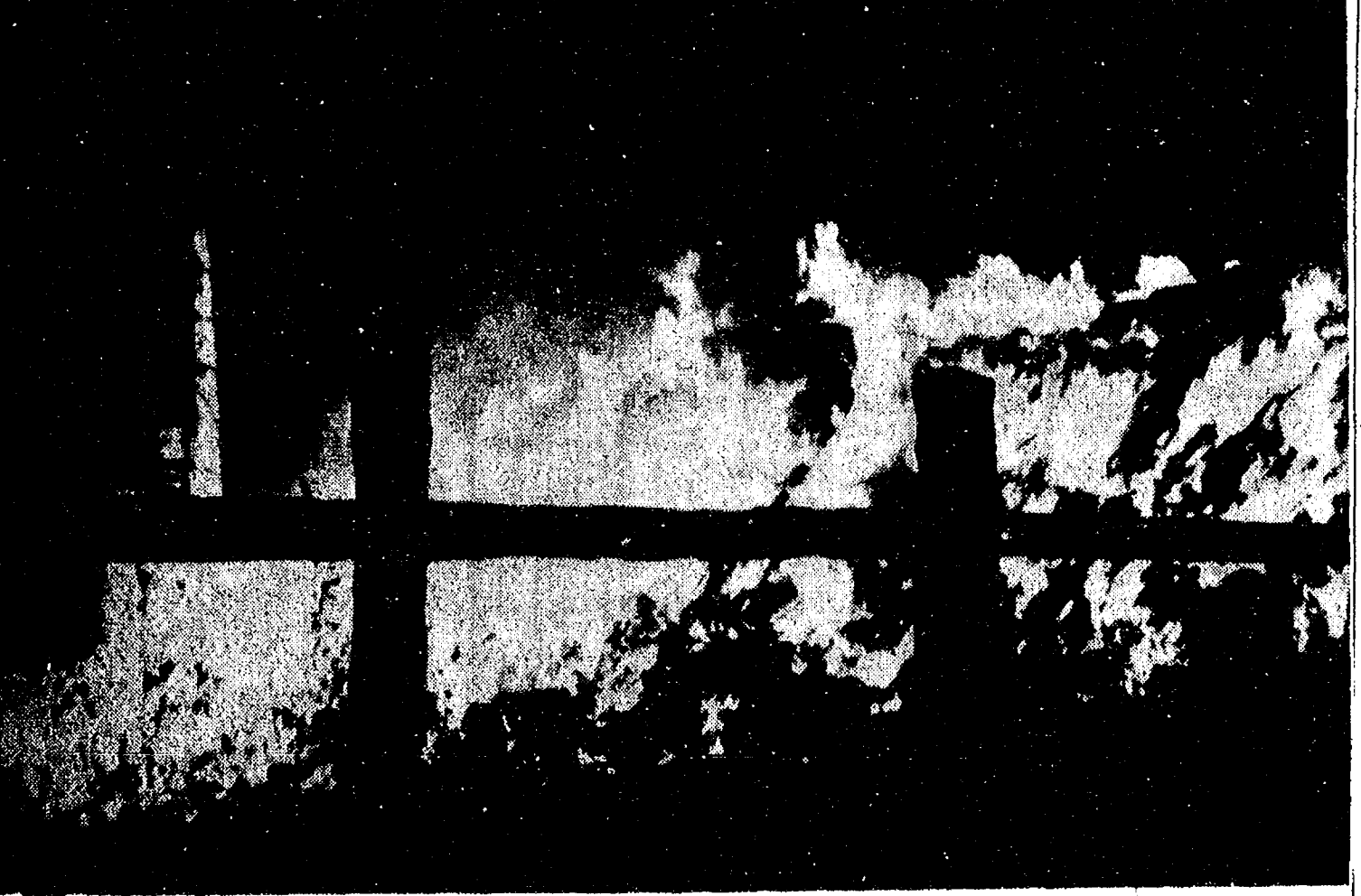
Paul Brown, 19, son of Mr. and Mrs. Andy Brown of 16455 Winters Rd., was bitten by a Massasauga rattlesnake Sunday, Sept. 12. As a result of the bite, he was admitted to Chelsea Community Hospital where he remained under intensive care for three days.

Treatment for the bite from the more than two foot long snake, equipped with six rattles, required seven bottles of anti-venom serum. Brown discovered the reptile on Bush Rd. near the McClure Rd. intersection while driving through

the area with his two brothers and a friend. He hit it on the head with a stick, and thinking it dead, picked it up and headed towards the local Department of Natural Resources office.

While on the way to the DNR office, Brown decided to stop and show the snake to his cousins. As he was returning to his car, the animal emitted a short rattling and pierced Brown's arm with its venomous fangs.

Brown was then driven to the (Continued on page six)



A FLAMING TEMPEST lit the sky along Chelsea-Dexter Rd. early Saturday morning as there by Charles Trinkle. Replacement cost of the fire destroyed the fourth barn in the Chelsea area in less than a month. Destroyed also were about 9,000 bales of straw and hay which had been stored there by Charles Trinkle. Replacement cost of the bales was estimated at \$10,000. (Photo by Harvey Nye)

Another Farm Barn Burns Early Saturday Morning

A pre-dawn blaze totally demolished a barn owned by Mrs. Ella Jenks of Detroit, located on Chelsea-Dexter Rd., Saturday, Sept. 18. The barn fire, the fourth to occur in the Chelsea area within the past month, is being investigated by the state fire marshal as the work of a suspected arsonist.

According to Chelsea Fire Chief Jim Gaken, the blaze was first sighted by Washtenaw County Sheriff's deputies at about 2:51 a.m. Shortly thereafter, a local resident, Jeff Weber, 19, returning home from work, spotted the fire and called the fire department to report the location, which had

been unidentified at the time of the deputies' dispatch.

On the scene when fire trucks arrived was Mark Bauer, who works the farm on shares although his residence is elsewhere in Chelsea. Because the farm was unoccupied, an immediate report of the blaze was delayed, causing the barn to have already sustained severe damage by the time the fire department responded to the alarm.

Firemen from Chelsea and Dexter, in four Chelsea fire trucks and three from Dexter, waited out the fire until about 7:30 a.m., after spraying the outlying buildings in the area with water to

prevent a further spread of flames. At one point, the flames stretched from 20 to 30 feet above the 40'x72' structure, witnesses reported.

The barn was built in 1939 for use in the dairy business, according to Bauer. It was one of the largest in the area, complete with a hip roof. Its design had allowed for a capacity load of 9,000 bales of straw and hay to be stored inside. The bales, valued at \$10,000, were all destroyed in the inferno. Shouldering the loss was Charles Trinkle, victim of a barn fire on his own property this past spring.

Results of the arson investigation are expected to surface Tuesday, Sept. 28.

Established 1871 **The Chelsea Standard** Telephone 475-1371
 Excellence Award By Michigan Press Association
 1951-1952-1960-1964-1965-1966
 Walter P. Leonard, Editor and Publisher

Published every Thursday morning at 300 North Main Street, Chelsea, Mich. 48118, and second class postage paid at Chelsea, Mich., under the Act of March 3, 1879.

Subscription Rates (Payable in Advance)
 In Michigan: Outside Michigan:
 One Year \$6.00 One Year \$8.50
 Six Months \$3.50 Six Months \$4.50
 Single Copies \$.20 Single Copies \$.25

MEMBER National Advertising Representative
NATIONAL NEWSPAPER MICHIGAN NEWSPAPERS, INC.
 Association - Founded 1885 257 Michigan Ave.
 East Lansing, Mich. 48823

Uncle Lew from Lima Says:

DEAR MISTER EDITOR:

The fellows at the country store voted unanimously Saturday night that when we get a strong sunset law in this country the second out of it to set ought to be Health, Education and Welfare. Zeke Grubb said it sink beyond the horizon right behind Occupation, Safety and Health, and the country would be better for their loss.

Zeke noted that sunset laws have gained attention in some state

legislatures, but the federal Government is steering clear. What with everybody in Washington spending 90 percent of his working day trying to explain what he does the rest of the time, Zeke allowed a law that would get rid of them that couldn't amount to job suicide. On the federal level, Zeke said, more is what holds the whole business together.

But what got the fellows on the subject was this clipping Ed, Doo-little had about sex discrimination in schools. It said the HEW won't allow school choirs that have girls or boys in them, they got choirs that have both. Ed declared that this one was worst than the one about not being able to hold father-son and mother-daughter meetings at school, and he had thought that put the stopper in the discrimination log. What the HEW will order next, went on Ed, is a quota of women baronesses and men sopranos, and they'll make sure they ride the same bus when they go to sing in all the circus shows.

Actually, broke in Bug Hookum, there's times when it's bad that church and state can't get down and work things out together. If we was to apply that mixed choir rule at his church, Bug said, we might could add an amendment calling for men and women to sing at the same time. As it is now, he went on, the women in the front usual get a few beats ahead and they intend to stay there. When the men in the back start bobbing their heads, flipping pages to find their place the choir winds up sounding like HEW wrote the music. A stout bass female voice would do wonders to set the pace on that front row, was Bug's idea.

General speaking, the fellows was agreed that less is as strange on a Congressman's tongue as no and the chances of coming up with laws to do away with passing dumb laws are about as good as finding a rock on Mars with "Kill Bug here" written on it. But Bug allowed HEW ain't the only party guilty of this charge. Bug had saw where the U. S. Fish and Wildlife Service has kept adding to their "endangered list" until flies and marigolds is about the only things left it ain't agin the law to kill.

It was Clem Webster that put in a good word for HEW before voting to drop it down the same hold with OSHA. That's the outfit, Clem said, that outlawed pay toilets because somebody told them if God had wanted people to have pay toilets we'd all of been born with exact change. Any Govern-

★ MICHIGAN MIRROR ★

By Warren M. Hoyt, Secretary, Michigan Press Association

About Those Turns
 Great, isn't it, that new law allowing motorists to turn right on red after stopping. Great for folks in a hurry.
 But what about those unfortunate enough to be in the right lane planning to go straight ahead? It's nerve-shattering to say the least to have some impatient carockey honking like crazy behind you.

A reminder to all drivers: the Department of State Highways and Transportation says there is no

obligation for a driver to turn right. (Left either, for that matter, depending on which way the streets go.)
 It is a courtesy, however, to stay out of turning lanes if you plan to go straight ahead. This will keep traffic flowing as the new law intended.

One more point about the red-turning law. Seems blind people, long accustomed to walking across intersections after hearing vehicles stop for a red light, now have trouble figuring out when to cross

because of cars turning on red.
 Michigan's State Police Director George Halverson issues this warning to drivers. They must let pedestrians cross the street BEFORE making a turn on a red light.
 "Motorists should be especially cautious when they see a blind person about to make a crossing," he says. "They must stop when approaching a person carrying a white cane or accompanied by a leader dog."

Rules for Hunting
 Hunters: Don't just shoulder that gun and head out into the woods to do your thing. Take your sharpest wits with you.
 Last year, according to a safety expert with the Department of Natural Resources, 234 hunters were hurt in hunting accidents in Michigan. (Some 1.2 million persons took part in hunting activities.)

And, says recreational safety supervisor Frank Opolka, "nearly 10 percent of the hunting accidents last year happened when the shooter and victim were less than 10 yards apart."

Shotguns were involved in almost two-thirds of the accidents. Opolka recounts, and the most frequent cause of hunting accidents in 1975 was poor judgment on the part of the shooter.

Opolka lists five essential safety precautions:
 —Be certain of your target.
 —Be equally certain no one is in your line of fire.

—Know where your hunting partners are at all times.

—When unloading your gun, check twice before you consider it unloaded.

—Don't drink alcohol while you're hunting.

Where Is It?

Watching a guy in red bathing trunks stack sandbag after sandbag against the slowly eroding shoreline outside his Lake Michigan cottage you wonder, Will it be any good?

More than 70 summer homes and cottages have been lost to Great Lakes erosion in the past seven years alone. And reports are that another 800 currently are 10-15 feet from edges of eroding bluffs and lakeshore areas.

At least a foot of land is washed into the lakes each year along part of the state's lakes coastline. Why can't man control the ebbing away of the land beneath him?

High lake levels—making erosion control efforts difficult—are one factor. And cost is another. Officials say it could cost up to \$200 a foot to build steel piling seawall.

But Michigan may continue shrinking if some efforts aren't made successfully. It's reported that north of Port Huron, a half mile of land has been washed away by Lake Huron since 1837.

Think Small
 You want to study, zoology at a Michigan college, so you'll have to go to one of the bigger institutions, right? Not so, says the

Hearing Set on Zoning Huron River Shoreline

Huron Valley Planning Group, an ad-hoc organization, recently completed a two-year study of the Huron River and recommended that certain portions be zoned country-scenic under the 1970 Natural Resources Act (Public Act No. 331). Dexter township supervisor John Tandy reported.

The 25-member group contributed more than 800 manhours to complete the personal observation study which calls for restrictions on the nature and type of development to be authorized along the river's shoreline. The ultimate goal of the group's recommendation is to keep the area along the banks of the Huron River as pristine as possible.

The group's proposed restrictions on riverbank useage can only be accomplished through local zoning. Consequently, a public hearing will be held on the issue, to be attended by representatives of the Michigan Department of Natural Resources and the Huron River Watershed Council.

The meeting is slated for 7:30 p.m., Wednesday, Sept. 29, at Dexter Township Hall. All area citizens are invited to attend with special invitation given to the riparian landowners within Dexter township.

Based upon the outcome of the public hearing, township officials

Association of Independent Colleges and Universities in Michigan.

The Association just published a 74-page booklet detailing what's available in the state's 33 independent institutions of higher learning.

There's information on each college and university, as well as a curriculum chart showing more than 100 degree programs offered by the institutions—ranging from accounting to zoology.

Copies of the publication may be obtained for \$1 each from AICUM, P.O. Box 10186, Lansing 48901.

Kidney Foundation Chapter Meets Tonight

Jay Finch, M.D., of the University of Michigan Medical Center, will be guest speaker at a meeting of the Huron Valley Chapter of the Kidney Foundation of Michigan at 7:30 p.m., tonight Thursday evening, Sept. 23, at the Campus Branch of the National Bank & Trust Co., corner of William and Thompson Sts., Ann Arbor.

will decide to what degree they will adopt the Huron River Planning Group's zoning recommendation.

Football time is here again, which will give many grown men the opportunity to make fools of themselves once again.

AMERICAN LEGION POST 557, DEXTER FISH and CHICKEN FRY EVERY FRIDAY

5:00 p.m. to 8:00 p.m.
 AMERICAN LEGION HOME, DEXTER

CHICKEN . . . \$2.75
 FISH . . . \$2.25

Children 12 years and under, 1/2 price

All You Can Eat!

PUBLIC WELCOME

Organ Music By Dick McInnis
 6 to 11 p.m.
 for sing-a-long and dancing.

CONLIN TRAVEL

Ann Arbor's largest travel agency has opened a new office in WOLVERINE TOWER in the ANN ARBOR BRIARWOOD area to better service Chelsea residents.

(WOLVERINE TOWER - the tall dark building near the corner of State Street and I-94.)

EASY PARKING AND ACCESS FROM THE EXPRESSWAY ON YOUR WAY TO THE AIRPORT.

OFFICE HOURS
 Weekdays: 8:30 a.m.-5:00 p.m. Saturday: 9:00 a.m.-Noon

FOR RESERVATIONS CALL: 769-9680

You pay no more for your tickets by letting us help you with your reservations!

JUST REMINISCING

Items Taken from the files of The Chelsea Standard

4 Years Ago...

Thursday, Sept. 23, 1972—The Board of Directors of Chelsea Medical Center will negotiate a contract for a new surgical wing this week. Once the contract is awarded, a ground-breaking will mark the start of the \$2.5 million, privately financed project which should be completed by July 1974.

Pat Whitcomb, chairman of the Chelsea Community Chest-United Way drive this year, announced the organization's goal, set a \$7,000. Collections will begin Monday.

The Chelsea Bulldog varsity grid team tore into Dexter Friday Sept. 22, sending them home with a gaping wound, a 30-0 defeat. Seven CHS cheerleaders will be telling their hearts out for Chelsea's varsity gridgers this fall. Squad members are Vickie Prater, Alicia Peterson, Jan Powers, Sue Ottoman, Nancy German, Carol Velle, and Cindy Leach.

The Rev. John R. Morris, pastor of Zion Lutheran church, will be a delegate to the Sixth General synod church in Minneapolis, Oct. 1-10.

14 Years Ago...

Thursday, Sept. 27, 1958—It's "Fall Color Tour" time in the Chelsea area and Chamber of Commerce committees, headed by Anton Nielsen and J. V. Burg, Jr. are busy preparing for the annual event. The Chamber of Commerce has been sponsoring color tours since 1955.

Teams from eight area fire departments, Hanover, Brooklyn, Grass Lake, Summit township, Concord, Blackman township, Leon township, and Chelsea, will compete in a public waterball contest on Saturday.

Chelsea Police Chief John Palmer shot and killed an 85-pound German Shepherd dog yesterday as the dog leaped to attack him. The incident occurred near the home of Mr. and Mrs. William Scott, whose 4-year-old son, Jeffrey, had been attacked earlier by the stray, and bitten on the arm.

Plastics pioneer Donald Churchill of Chelsea was appointed director of chemical engineering at Geimar Instrument Co., officials of the firm announced today.

James Daniels and Wallace Wood are ticket chairmen for the second annual travelogue series sponsored by the Chelsea Kiwanis Club. Nearly 400 of the 650 season tickets available for the 1982-83 series have already been sold.

ment agency that goes along with solid logic like that can't be all bad, was Clem's words.

Yours truly,

Uncle Lew.

24 Years Ago...

Thursday, Sept. 23, 1952—The Pig Scramble will be one of the main attractions at the 1952 Chelsea Community Fair Friday afternoon, Oct. 3. A group of businessmen and farmers of the community donated \$25 each for the purchase of a purebred Duroc gilt to be used in the event.

Clarence A. Reid, Republican candidate for lieutenant governor will be in Chelsea Friday afternoon to meet and talk informally with people of the community.

Mrs. John Chaplin, elementary PTA president, appointed Mrs. Parker Sharrard as hostess chairman of the PTA for the year, and Mrs. Alfred Weismann, Mrs. Mackard, and Mrs. Homer Nixon as the year's program committee at the PTA's first meeting of the year.

Six car dealers in the area will provide any resident in the Chelsea area with transportation to one of the voter registration locations currently registering voters for the Nov. 4 election. They are Albe Motor Sales, W. R. Daniels, Grassman's Garage, Harper Sales & Service, Palmer Motor Sales, and Spaulding Chevrolet.

34 Years Ago...

Thursday, Sept. 24, 1942—Watson Bonds will be sold at an auction in Chelsea on Saturday night, Oct. 3, as a part of the activities at the Chelsea Community Fair.

The Chelsea Industrial Workers' Association, Inc., has completed its first year as an independent labor organization in Federal Screw works. At the annual election of trustees held in the various plants Sept. 14, Charles W. Thomas was re-elected president, Rha Alexander, treasurer, and Margaret Haselschwerdt, secretary.

Claude S. Rogers of Chelsea who has been attending Officers Candidate School at Fort Washington, Md., was graduated and commissioned a 2nd Lieutenant in the Adjutant General's Department of the U. S. Army Sept. 19.

It's bad enough to watch most of the newer movies and even worse to hear about the men who made them.

CELSIUS, METRIC, SCHMETRIC...

Got you in a tizzy?

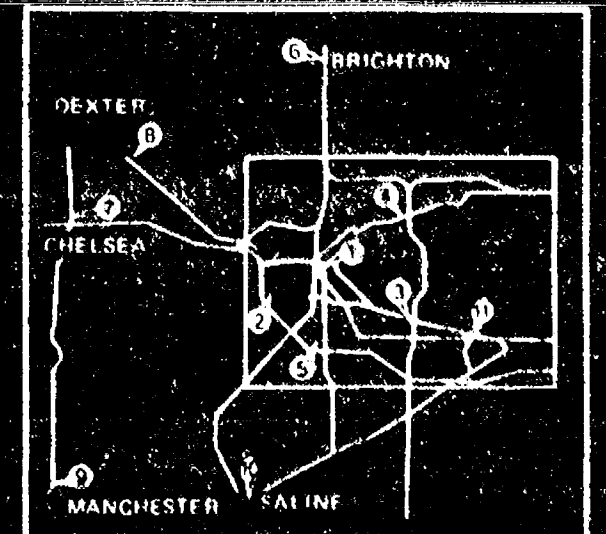
OUR FREE NEW METRICS SLIDE RULE MAKES IT ALL EASY.

Don't panic! Help is as near as your nearest Ann Arbor Federal Savings office. With our new Metric Slide Rule you can easily change feet into metres, gallons to litres, fahrenheit to celsius, etc. The slide rule comes in a handy pocket size so you can have this great, new crutch with you wherever you go. Free at all AAFS offices...quantity limited...one to a customer...while they last.



Available at Any of Our 11 Conveniently Located Offices

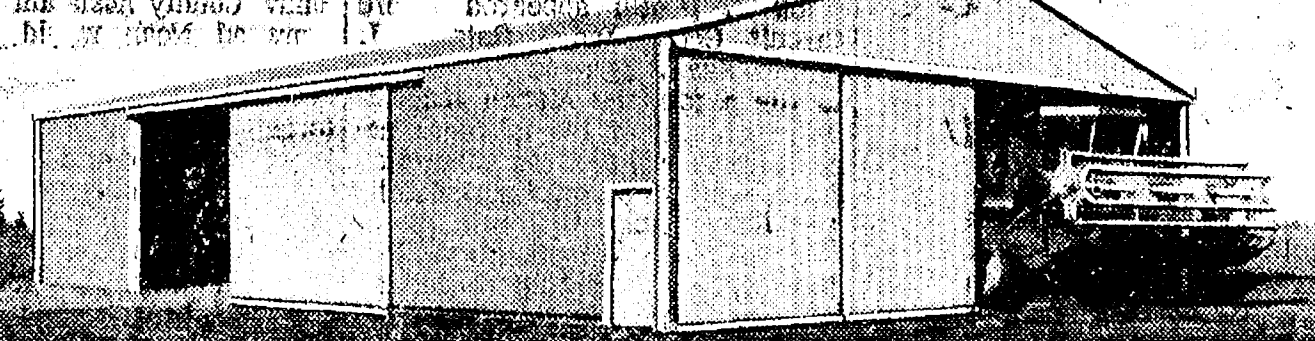
ANN ARBOR: 1. Liberty at Division; 2. Pauline at Stadium; 3. Huron Parkway at Platt; 4. Plymouth at Nixon; 5. Briarwood Circle - BRIGHTON; 6. 205 W. Grand River; CHELSEA: 7. Main Street Near Old U.S. 12; DEXTER: 8. 8081 Main Street; MANCHESTER: 9. 111 E. Main Street; SALINE: 10. 101 W. Michigan Avenue; YPSILANTI: 11. 2170 Packard Road



ANN ARBOR FEDERAL SAVINGS

Member FDIC

NEW LOW



PRICES ON OUR FOUR MOST POPULAR BUILDINGS!

Four popular farm buildings in the sizes farmers want most. Pre-engineered to Wickes high quality standards, and reduced in price to pass along the big savings now possible with new advanced construction methods. Like all Wickes buildings, they're backed by our reputation for dependability and economy, and the low package prices include prompt erection on your land by skilled Wickes crews. Call collect for full details.

Wickes Buildings
 A Division of The Wickes Corporation

Stockbridge, Michigan, Box 515
 (517) 851-7060

Width	Length	Clearance
50'	64'	13'3"
42'	64'	13'3"
30'	40'	9'3"
54' Off-Peak	64'	13'3"

*Can be increased in 16' increments.

New, Advanced Construction Methods!
 Reduce labor costs at the job site.

Colors Galore!
 Seven beautiful new farmstead sliding colors. Seven contrasting trim colors!

Strongest Warranty!
 5-year warranty on all materials and workmanship. 30-year warranty on roof leaks due to corrosion.

Embroiderer Guild Chapter Being Formed

Several area residents with an interest in learning more about needlepoint, crewel, embroidery, and similar crafts, have undertaken moves to form a Chelsea chapter of the National Embroiderers' Guild of America, spokesmen reported Wednesday, Sept. 15.

Currently, the Chelsea faction seeking charter to the Guild is awaiting a reply to their inquiry on procedures, made recently to national headquarters.

As an educational non-profit organization, meeting six to eight times per year, the Guild attempts to set and maintain high standards of design, color and workmanship in a variety of embroidery and canvas work.

Some suggested programs will be needlepoint workshops in plaids, metallic threads, and fisherman patterns. Also under consideration are blackwork and assisi, applique and wedged quilting, and ribbon pin cushion effects.

An organizational meeting will be held Oct. 5 at 1 p.m. For more information, contact Marie Colombo, 475-8445, or Pat Dittmar, 475-2025.

Beware of the sugar-drippers of television, who always show a sweet, sweet smile. One sometimes suspects some are killers!

Magic Mirror Beauty Salon

Open Tuesday thru Friday
9 a.m. to 9 p.m.
Saturday, 8 a.m. to 3 p.m.

PHONE 665-0816

CARPET REBIRTH

Give your carpet a new lease on life
by cleaning it regularly.

JET SPRAY CARPET CLEANING

Use Your BankAmericard Phone 761-3025 or 475-1509
Ask for John Lixey.

STYLE SHOP

207 1/2 S. MAIN PH. 475-8400

NOW THRU OCT. 1

\$5.00 OFF

ON

PHASE 3 PERM

Judy, Rosemary, Shirley
and Pansy

VILLAGE BEAUTY SALON

107 N. Main St., Chelsea

Sept. 1 thru Sept. 30

MON. - Blow Dry Styling . . . 20% Off

TUES. - Manicures . . . \$1.50
With Shampoo and Set

WED. - \$2.00 Facial with purchase of \$10.00

THURS. - Hot Oil Treatment . . . \$3.00
With Shampoo and Set

FRI. - Men's Hair Styling . . . 20% Off

SAT. - Children's Hair Cuts . . . 20% Off
(10 and under)

Senior Citizens honored always
with 20% Off ANY Service

Call or Stop By Today for Appointment
475-1671

Lisa, Kim, Carol, Janice, Jane

Letters to the Editor

Dear Editor:

I dislike letters that are written anonymously, but I feel that the records should be clarified since a "Fed-up Participant's" letter was published.

First, the Rocking Chair Marathon was sponsored by the Western Washtenaw Bicentennial Committee, not the Chelsea Bicentennial Committee. Chelsea was the host because it is centrally located for the Dexter, Manchester and Chelsea participants.

Secondly, Western Washtenaw Bicentennial did go into the hole on the Marathon. Simple arithmetic will show that the \$15 per rock entrance fee no where near paid for the prizes of nearly \$1,000, plus other overhead expenses.

Thirdly, the representatives of the Senior Class attended a regular meeting of the Chelsea Bicentennial board meeting to present their case. It was unanimously agreed by the Board that the Seniors had done an excellent job. They indicated that they had \$37.12 "out of pocket" expenses for their lunch stand. Although, since this was a Western Washtenaw activity, Chelsea Bicentennial had no legal liability for the Western Washtenaw financial commitments. If any, the Board voted to pay the Senior Class for their "out of pocket" expenses. The Senior representatives were instructed to present the Board with a bill in a business-like manner. They agreed to do so, but to date no bill has been received even though a board member telephoned the senior that had been indicated as the one to prepare the billing.

Wanda Schiller and many others, worked hundreds of hours each to make the Chelsea Bicentennial activities a success, as well as using their own money for small purchases and taking time off from their regular work. None of the regular workers need to be ashamed of their efforts.

Wallace Wood, President
Chelsea Bicentennial, Inc.

District Court Proceedings

Week of Sept. 14-20

Rodney James Spence was sentenced to pay fines and costs of \$250, and to the Alcohol Safety Action Program on charges of driving under the influence of liquor.

Michael Lytle pled guilty to charges of consuming alcohol while operating a motorcycle. Fines and costs, \$50.

David Schumacher was sentenced to pay fines and costs of \$350, to one year probation, to 15 days on the police department work program, and to the Alcohol Safety Action Program on charges of driving under the influence of liquor and failure to have his operator's license on his person.

Ronald Pustay pled guilty to charges of parking in a no-parking zone. Fines and costs, \$17.

Ronald Pustay pled guilty to charges of driving a tractor without an operator's license. Fines and costs, \$20.

Walter Wojtylski was sentenced to pay fines and costs of \$500, to two years probation, and to 30 days in jail on charges of impaired driving.

James J. Witherspoon failed to appear in court on charges of driving under the influence of liquor. A bench warrant was issued for his arrest.

Gary Lee Shadley pled guilty to charges of driving under the influence of liquor and impaired driving. He was referred to probation and will be sentenced Nov. 1.

Gary Lee Shadley pled guilty to charges of driving with an expired operator's license on his person. He will be sentenced Nov. 1.

James Dean Walters pled guilty to charges of driving with license suspended. He was sentenced to pay fines and costs of \$75, and to five days on the Washtenaw County Sheriff's Department work program.

Gerald T. Berger pled guilty to charges of failing to have his vehicle registration in his possession. Fines and costs, \$15.

Gregory Brighton pled guilty to charges of public intoxication. Fines and costs, \$30.

David L. Baker was sentenced to pay fines and costs of \$250, to six months probation, to five days on the Washtenaw County Sheriff's Department work program, and to pay \$35 restitution costs to the Washtenaw County Road Commission on charges of impaired driving.

Robert Joe Robinson was sentenced to 90 days in the county jail on charges of driving under the influence of liquor.

David L. Sundling was sentenced to pay fines and costs of \$100, and to 10 days on the Washtenaw County Sheriff's Department work program or to 60 days in jail on charges of receiving and concealing stolen property valued under \$100.

Esther I. Vanduzen was found guilty on charges of speeding. Fines and costs, \$35.

Westley Waterbury, Jr. pled guilty to charges of impaired driving. He was referred to probation and will be sentenced Oct. 28.

James E. Gilber, Jr. pled guilty to charges of drunk and disorderly. Fines and costs, \$50.

David C. Salozza pled guilty to charges of destruction of property. He was referred to probation and will be sentenced Oct. 28.

Gordon Blaskowski pled guilty to charges of speeding. Fines and costs, \$42.

Steven Lyerla was sentenced to pay fines and costs of \$250, to six months probation, and to the Alcohol Safety Action Program on charges of impaired driving.

George M. Michael pled guilty to charges of driving under the influence of liquor. He was referred to probation and will be sentenced Nov. 1.

Frank C. Holly pled guilty to charges of careless driving. Fines and costs, \$40.

Frank C. Holly pled guilty to charges of failing to have his operator's license on his person. Fines and costs, \$15.

Allan Castlebury pled guilty to charges of disobeying a stop sign and driving with an expired operator's license. Fines and costs, \$25.

Susan M. Kirchoff pled guilty to charges of improper registration and driving without a rear view mirror. Fines and costs, \$15.

Arnold Flores pled guilty to charges of speeding. Fines and costs, \$50.

Patricia Frazier pled guilty to charges of allowing her dog to run at large. Fines and costs, \$22.

Ronald Mackey pled guilty to charges of permitting an unlicensed driver to operate his vehicle. Fines and costs, \$40.

Eugene K. Lathrup was sentenced to pay fines and costs of \$100 on charges of larceny of property valued under \$100.

John Pixley was sentenced to pay fines and costs of \$100 on charges of larceny of property valued under \$100.

Larry D. Lake was found guilty on charges of allowing his dog to run at large. Fines and costs, \$23.

Timothy Sines pled guilty to charges of careless driving. He will be sentenced Oct. 15.

Robert Mowat pled guilty to charges of no registration. Fines and costs, \$10.

Willard Roy Rowland pled guilty to charges of no operator's license on his person. The case was dismissed on costs of \$10.

Raymond Hohe was found guilty on charges of speeding. Fines and costs, \$25.

William H. Northrup pled guilty to charges of driving under the influence of liquor. He was referred to probation and will be sentenced Nov. 5.

Elizabeth Ann Perry was sentenced to pay fines and costs of \$250, and to one and one-half years probation on charges of illegal entry and malicious destruction of property valued under \$100.

Richard Ferns pled guilty to charges of driving an overweight truck. Fines and costs, \$1,500.

David John Burrows was sentenced to pay fines and costs of \$300, and to the Alcohol Safety Action Program on charges of impaired driving.

Donald B. Rockman pled guilty to charges of driving under the influence of liquor and impaired driving. He was referred to probation and will be sentenced Nov. 5.

William Cotton, Jr., pled guilty to charges of drunk and disorderly. Fines and costs, \$30.

Charles Stevens pled guilty to charges of drunk and disorderly. Fines and costs, \$30.

John Creek pled guilty to charges of possession of alcohol in a restricted area. Fines and costs, \$35.

Paul Pattwell pled guilty to charges of transporting open intoxicants in a motor vehicle. Fines and costs, \$35.

Richard Joseph pled guilty to reduced charges of impaired driving. He will be sentenced Nov. 8.

Kevin Dorer pled guilty to charges of driving on a restricted license. Fines and costs, \$75.

Gerald Whaley pled guilty to charges of transporting open intoxicants in a motor vehicle. Fines and costs, \$30.

Gerald Whaley pled guilty to charges of water skiing without an observer in the area. Fines and costs, \$21.

Michele Flowers pled guilty to charges of possession of alcohol in a restricted area. Fines and costs, \$35.

Michael Doan pled guilty to charges of careless driving. Fines and costs, \$75.

Alfred Guzman pled guilty to reduced charges of impaired driving. He was referred to probation and to the Alcohol Safety Action Program, and will be sentenced Nov. 8.

Donald Mallory pled guilty to charges of reckless driving. Fines and costs, \$100.

Kenneth Bunn pled guilty to charges of drunk and disorderly. Fines and costs, \$50.

Robert W. Penn was found guilty on charges of impaired driving. Fines and costs, \$300.

Kidnapping . . .
(Continued from page one)

Meranuk complimented the "nice teamwork" carried on between local police, the FBI, and the sheriff's department, and the Wichita FBI and Sumner County Sheriff's Department in Kansas, who all operated to bring Siegel to justice. In particular, Meranuk praised the work of local FBI Agent Tom Love. "Without his help, I don't think we would have made it," Meranuk said.

LYNN'S BEAUTY SHOP

1196 CHELSEA-MANCHESTER RD.

(across from Village Motor Sales)

475-1591

★ Complete Hair Care

★ Air Conditioned

★ Free Parking

HOURS:

Monday thru Wednesday 9 a.m.-2 p.m.

Thursday 9 a.m.-7:30 p.m.

Friday 9 a.m.-5 p.m.

Saturday 9 a.m.-12 noon



Harvest Season Theme Followed at Ruth Circle Meeting

Ruth Circle of First United Methodist church met Wednesday, Sept. 15, at the Crippen Memorial Building for a social hour and business meeting hosted by Iva Barton and Hazel Summers. Twenty members and four guests were in attendance.

Tables were decorated with baskets of fruit, vegetables, and nuts in keeping with the harvest season. Marjorie North opened the business meeting with a reading of the Purpose of United Methodist Women. She then introduced the visitors, Willa Finch, Jane Schairer, Martha Luick, and Joan Weber.

The proposed budget for 1977 was entered and explained in detail to the group by Mrs. Luick. Several thank-you notes from members who had received get well cards and flowers since the June meeting were read by the secretary, and the family of Alice Value, who had been a member of the group for many years prior to her recent death, had sent a note of appreciation for the memorial gift presented by the United Methodist Women.

After the news sheet was read and discussed, Jane Schairer outlined the monthly Pledge Service. Her key work was "hurt," as she explained the many ways the group's mission money helps deal with the hurting so many feel all over the world. Each member added a link to the chain Mrs. Schairer is making upon pledging prayers, time and gifts to the work of United Methodist Women.

The meeting adjourned with a prayer circle. Next meeting is slated for 1 p.m., Oct. 20, at the Crippen Building, with the Rev. Ralph Harper, speaker for the occasion.

Altar Society Elects Officers

St. Mary's Altar Society held its first fall meeting Sept. 13, with the election of officers for the 1976-77 year an agenda priority.

Elected by a unanimous vote were president, Sally Kargel; first vice-president, Mildred Eels; second vice-president, Anna Laban; secretary, Del Erickson; and treasurer, Marge LaRose.

Following the business meeting, slides of Our Lady of Fatima were shown, and refreshments served.

Beta Sigma Phi Begins Fall Sessions

Members of the Xi Gamma Mu chapter of Beta Sigma Phi began their year with a summer salad supper at the home of Ruth Blecha. Winner of the American Flag Afghan, at the ensuing raffle, was Mrs. Dorothy Linebaugh. Tickets for the afghan, made by Betty Koch, had been sold during the summer.

At the group's first regular fall meeting, held at the home of Lavonda Hayes Sept. 7, guest-speaker Millie Smith, a resident of the Methodist Home, addressed the members on the topic of "Prepare Now for Retirement."

Recently, Mrs. Smith went on a 35-mile hike through Waterloo Recreation Area with her grandson.



by Wyler

Raised coin-struck
POCKET WATCH

Vests are in style! Pocket watches are fun... worn with or without chains.

But his Signal/Wyler is more than fun/fashion. It's a superb timekeeper you can rely on and show off.

Spring-open cover reveals a smart Victorian face with classic arabic numerals and a second dial.

Shown: Fishing scene, also available hunting scene, both deeply die-struck in white or yellow. True beauty for ONLY \$69.95

WINANS JEWELRY

Professional Wyler Jeweler

The Chelsea Standard, Thursday, September 23, 1976

SPECIAL NOTE

In District Court Proceedings listed on page 14 of the Sept. 16 issue of The Standard, Randy Guenther, fined \$50 for speeding, is a Saline resident, and not the son of Mr. and Mrs. Elton Guenther of 601 Grant St., also named Randy.

COURT NOTATION

A report of 14th District Court proceedings published in the Sept. 16 issue of The Standard, included a statement of charges and fines brought against a Jeffrey Miller. Miller is a Manchester resident, and not the son of Mr. and Mrs. William Miller of 4337 Loveland Rd., also named Jeffrey.

COUPON

**SEPTEMBER
SERVICE SPECIAL
FRONT SHOCKS**

INSTALLED

Only \$16.95

Passenger Cars Only

With This
Coupon

Lloyd Bridges Chevrolet

PHONE 475-1373

1-94 at M-52

Chelsea

HOUSE OF ORIENT BEAUTY SALON

107 W. MIDDLE

PH. 475-8196

Starting September

**TUESDAY ONLY
SENIOR CITIZEN
DAY**

ALL PERMS
\$5.00 Off Reg. Price
SHAMPOO & SET
\$4.00



CLEARANCE ON ALL WIGS!
\$4.00 Off - Now Only \$12.00

Stop By or Give Us A Call
Carolyn, Charlotte and Nola

LOSE UGLY FAT

Start losing weight today or money back. MONADEX is a tiny tablet and easy to take. MONADEX will help curb your desire for excess food. Eat less - weigh less. Contains no dangerous drugs and will not make you nervous. No strenuous exercise. Change your life... start today. MONADEX cost \$3.25 for a 20 day supply. Large economy size is \$5.50. Also try AQUATABS: they work gently to help you lose weight. AQUATABS - a "water pill" that works - \$3.00. Both guaranteed and sold by: CHELSEA DRUG STORE 101 N. Main St. - Mail Orders Filled.



DANCER'S

Chelsea's Friendly
Dept. Store

FEED

FOR PROFIT



Feed Formulas Tested, Proved To Get Results

Extra proteins, vitamins and minerals in proper balance, scientifically blended, make our feeds real profit producers for you.

Farmers' Supply Co.
Phone GR 5-5511

School Budget Pared \$168,000 To Keep Millage Request Low

(Continued from page one)

for a savings of \$36,000. Thus total savings in all budget areas comes to \$168,000.

Then why is the school district asking for an additional 1.5 mills on Oct. 19? In a nutshell, the district has lost an additional \$128,882 in state aid funds in the past two years was the reply of board officials.

The complete story dates back to November, 1975. At that time the state economy was experiencing a severe recession. Revenue coming into the state treasury was well below amounts anticipated, and because the state constitution had forbidden the state to operate on a deficit budget, Michigan Governor Milliken made sweeping budget cuts in nearly every category, including aid to public schools. As a result the Chelsea School District lost \$40,264 in state aid funds. In February, 1976 the Governor said the first cut was not enough and withheld \$22,300 more.

At about the same time the economy took a dramatic up-turn. Auto industry profits soared. The school board became optimistic for the following reasons:

1. With the improved economy the board felt there was a good chance the state aid cuts would be restored.

2. The State Legislature said they would pass a bill guaranteeing school districts six percent more revenue from the total of state aid and taxes for the 1976-77 school year.

The board felt it could live with a renewal millage in March,

without cutting programs, if stringent cost saving measures were imposed in the district and the state aid cuts were restored.

The cost savings measures as outlined above were initiated and did save the district \$168,000. The school board asked for a renewal millage in March, and it passed. Then in July the legislature passed a bill that not only failed to restore the \$62,564 lost last year, but based the 1976-77 school year income on that reduced amount. That meant the district has to make up another \$62,564 plus six percent of that figure (the six percent guaranteed increase). The total amounted to \$128,882, outlined as follows:

1975-76 cuts in State Aid—\$62,564
1976-77 cuts in State Aid—62,564
6% of 1976-77 cuts in Aid—3,754

There was one positive note in the changed state aid law. The law allowed the school districts to vote more millage without suffering a corresponding reduction in state aid funds, which was not true in March. The funds generated by additional millage gains were authorized to be kept in full by the district.

The 1.5 mill increase presently being requested by the Chelsea School District will bring \$148,000 in additional revenue. The funds are needed to make up the state aid loss equal to \$128,882. The remaining \$19,118 will be used to cover recent increases in the cost of fuel and utilities.

The school board believes the above information ultimately il-

lustrates that the Chelsea School District's budget is being managed so as to provide maximum educational benefit with the dollars available.

The board further believes these facts and figures confirm that the 1.5 mill increase requested is both necessary and reasonable, and therefore urges residents to consider the publicized economic figures when turning out at the polls to cast their ballot in the October millage election.

Fair Planning Women's Job Session Set

Everyone interested in participating in a Women's Job Fair this fall is invited to a planning session on Monday, Sept. 27, 7:30 p.m., in Courtroom 1, County Building, Ann Arbor. Access is through the loading dock door off the parking lot.

The Job Fair will be held Sunday, Oct. 24 from 1 to 8 p.m. at Washtenaw Community College, located between Ann Arbor and Ypsilanti. It is sponsored by the Washtenaw County Advisory Committee on the Status of Women.

Gas Co. Plans Calorie Counter Demonstrations

On Tuesday, Sept. 28 at 1 p.m. and Wednesday, Sept. 29 at 7:30 p.m., home economists from Michigan Consolidated Gas Co., Ann Arbor, will demonstrate how to prepare delicious low calorie recipes. Cooking tips which help save energy will also be discussed. The "Calorie Counter" programs are being held in the company's Consumer Services auditorium, 211 E. Huron St., Ann Arbor.

The principles of eating nutritious, well-balanced meals will be applied to suggestions for following a safe weight reduction diet. Additional tips will be given on how to plan inexpensive and interesting low calorie meals using a variety of food items.

New recipe ideas for Slim Chili, Chocolate Mousse, Sweet and Sour Shrimp, Raspberry Angel Dessert and Crunchy Bread Sticks will be shown. Each audience member will learn to calculate his desirable calorie intake for losing weight successfully.

Both programs are the same, free and open to the public. A new "Calorie Countdown Cookbook" will be distributed and door prizes will be drawn. Reservations may be made by calling 769-5161, Extension 214 or 215.

STRANGE STICKUP

A man walked into the dentist's office with a towel wrapped around his jaw and knotted on top of his head; it covered most of his face. "My word," laughed the elderly dentist, "I haven't seen anyone with a toothache wearing a setup like that for 40 years." "What toothache," was the garbled reply, "this is a stickup."

REGISTRATION NOTICE

GENERAL ELECTION TUESDAY, NOVEMBER 2, 1976

To the Qualified Electors of the TOWNSHIP OF SYLVAN (PRECINCT NO. 1 and 2) COUNTY OF WASHTENAW, STATE OF MICHIGAN

Notice is hereby given that in conformity with the "Michigan Election Law," the undersigned Clerk, will, upon any day, except Sunday and a legal holiday, the day of any regular or special election or primary election, receive for registration the name of any legal voter in said Township, City or Village not already registered who may APPLY TO ME PERSONALLY for such registration.

Notice Is Hereby Given that I will be at Chelsea Drug, 101 N. Main St., Chelsea, any day from 8 a.m. to 5 p.m.
Notice Is Hereby Given That I Will Be at Chelsea Drug,

101 N. Main St., Chelsea, on

Monday, Oct. 4, 1976 - Last Day

From 8 o'clock a.m. until 5 p.m.
THE 30th DAY PRECEDING SAID ELECTION
And on Saturday, October 2, 1976 - 8 a.m. to 5 p.m.
As provided by Section 498, Act No. 116, Public Acts of 1954.
As Amended.

For the purpose of REVIEWING the REGISTRATION and REGISTERING such of the qualified electors in said TOWNSHIP, CITY or VILLAGE as SHALL PROPERLY apply therefor.

The name of no person but an ACTUAL RESIDENT of the precinct at the time of registration, and entitled under the Constitution, if remaining such resident, to vote at the next election, shall be entered in the registration book.

Elector Unable To Make Personal Application, Procedure

SEC. 504. Any elector who is unable to make personal application for registration because of physical disability or absence from the Township, City or Village in which his legal residence is located, may be registered prior to the close of registration before any election or primary election by securing from the Clerk of the Township, City or Village in which is located his legal residence, duplicate registration cards and executing in duplicate the registration affidavit before a notary public or other officer, legally authorized to administer oaths and returning such registration cards to the Clerk of the Township, City or Village before the close of office hours on the last day of registration prior to any election or primary election. The notary public or other officer administering the oath shall sign his name on the line for the signature of the registration officer and designate his title.

Unregistered Persons Not Entitled To Vote

SEC. 491. The inspectors of election at any election of primary election in this State, or in any District, County, Township, City or Village thereof, shall not receive the vote of any person whose name is not registered in the registration book of the Township, Ward or Precinct in which he offers to vote. (As provided under Act 116, P. A. 1954.)

Transfer of Registration, Application, Time

SEC. 506. Any registered elector may upon change of residence within the Township, City or Village cause his registration to be transferred to his new address by sending to the Clerk a signed request, stating his present address, the date he moved thereto, and the address from which he was last registered, or by applying in person for a transfer. The Clerk shall strike through the last address, ward and precinct number and record the new address, ward and precinct number on the original and duplicate registration cards, and shall place the original registration card in proper precinct file. Such transfers shall not be made after the Fifth Friday preceding any election or primary election (unless such Fifth Friday shall fall on a legal holiday in which event registration shall be accepted during the next full working day.)

Transfer of Registration on Election Day

SEC. 507. Any registered elector who has removed from one election precinct of a Township, City or Village to another election precinct of the same Township, City or Village and has not recorded such removal with the local Clerk shall execute a transfer of registration request, listing the new residence address thereon over his signature, with the election board in the precinct in which he is registered at the next ensuing primary or election. The inspector of election in charge of the registration records shall compare the signature thereon with the signature upon the applicant's registration record and, if the signatures correspond, then the inspector shall certify such fact by affixing his initials upon said request. The applicant for transfer, after having signed an application to vote as provided in Section 523 of this act, shall then be permitted to vote in such precinct for that primary or election only. The application for transfer shall be filed with the Township, City or Village Clerk who shall then transfer such voter's registration in accordance with the application. When the name of any street in a Township, City or Village has been changed, it shall be the duty of the Township, City or Village Clerk to make the change to show the proper name of street in the registration records, and it shall not be necessary for the elector to change his registration with respect thereto in order to be eligible to vote.

Daniel J. Murphy, Township Clerk

Century self-contained water softener

compact convenience gets rid of washday blues

Gone are dull, drabby colors... stiff, starchy laundry... gray shirts that should be white. With a Century water softener, wash days become brighter. And this beautiful compact unit frees-up floor space, makes your laundry area larger. Phone for details.

Master Charge and BankAmericard Welcome

CRYSTAL CLEAR CO.

4757 Dexter-Pinckney Rd.
Dexter, Mich. - 426-4220

STORE HOURS: Mon.-Fri. 9-5:30
Sat. 9-4. Closed Sundays

PORK SALE

PORK SIDES

100-Lb. Avg. 79¢ lb.

Cut, Wrapped, Frozen - Ready for Pick-Up

BEEF SIDES . . . 89¢ lb.

Cut, Wrapped, Frozen - Ready for Pick-Up
(Cost after processing - \$1.12-\$1.15 Lb.)

We Have A Few Lockers Still Available

CUSTOM SLAUGHTERING and PROCESSING

HOME FREEZER MEATS Wholesale - Retail

NO WAITING

We Accept Federal Food Stamps

ORDERS READY TO TAKE HOME

Discount to Civic Groups

DEER PROCESSING

PHONE 426-8466

DUNBAR'S

8083 MAIN ST., DEXTER

DEXTER LOCKER

PAUL DUNBAR, OWNER

Cobblestone Farm Fall Festival Scheduled Sunday

"Fall Festival '76 at the Cobblestone Farm at 2781 Packard Rd. at Buhr Park, Ann Arbor, will be celebrated Sunday, Sept. 28 (with a rain-postponement date of Sunday, Oct. 3) from 12 noon until 5 p.m., with a galaxy of outdoor old-time craft demonstrations, house tours, square dancing on the green, farm and home-made refreshments, display of the "Michigan Heritage Bicentennial Quilt" and the debut of an historically authentic drawing of the Farm as it would have appeared at the turn of the century by Ann Arbor artist Charles Ciccarelli.

The Cobblestone Farm Association and the Ann Arbor Bicentennial Commission, co-sponsors of the event, invite you to stroll the farm grounds to watch artisans ply such 19th century crafts as quilting, rug-hooking, weaving, spinning, chair caning, clatter-pressing, horse-shoeing, and the shaping of vessels on the potter's wheel; two high-wheeled bicycles, which are to be ridden at some point in the afternoon, and operating miniature steam engines of the type used on farms in the 19th century are sure to interest the children. Look over the collection on the "collectibles" table to see if there is anything you would like. Then visit the plants table for house plants and perennials and the table at which home-made jams and jellies and home-canned fruits and vegetables will be sold. Refreshments will be available in the form of farm-fresh cider, home-made cakes, doughnuts, lemonade, ice cream and popcorn from the "Pretzel Bell" machine.

Inside the cobblestone portion of the house, Charles Ciccarelli will be displaying the original of his meticulously detailed drawing of the Cobblestone Farm with its vanished outbuildings and 1877 porch intact. The artist, who will also be showing his drawings and prints of other historic Ann Arbor scenes, will take orders on a limited edition print of the Cobblestone Farm drawing.

Also to be displayed are the renderings and plans drawn up by architect Richard Neumann of Preservation Urban Design for the structural re-building of the 1833 wooden kitchen all at the north side of the cobblestone house. Work on the ell is to begin this autumn.

Certain to be of interest to those who did not have a chance to see it earlier this year is the unique and beautiful "Michigan Heritage Bicentennial Quilt," which was created by the "Calico Quilters" of Ann Arbor to benefit the restoration fund for the Farm. The quilt, which was shown to President and Mrs. Ford on their recent visit to Ann Arbor, represents major events in Michigan history, as well as the most important of Michigan's institutions, industries, landmarks, agricultural produce, and natural beauties.

Sesquicentennial Certificates Honor 75-Year County Residents

Any person or family who has lived continuously in Washtenaw county for 75 years or more may receive a special Sesquicentennial Family certificate through a program announced today by Ann Arbor Bank & Trust Co.

The names of individuals and families who apply for the award will be recorded in The Book of Washtenaw which will be presented for safekeeping to the Washtenaw County Historical Society at the end of this year and used for future historical and genealogical research.

"It seems appropriate that in 1976, the year of the nation's bicentennial as well as the sesquicentennial of Washtenaw county, recognition should be given to those men, women and families whose long residence and work in this county have in so many ways helped to make it an exceptionally fine place to live," said Joseph B. Foster, president of the bank.

Application for the free certificates may be made at any office of Ann Arbor Bank & Trust Co. in Ann Arbor, Dexter, Whitmore Lake and Scio township. Information about the program may be obtained by calling 995-7784.

Dial-A-Garden

Dial-A-Garden, the system of pre-recorded daily gardening tips is sponsored by the Washtenaw County Co-operative Extension Service. The system is in operation 24 hours per day, 7 days per week. Interested persons are invited to call 971-1122 at their convenience and receive timely, up to date gardening information.

Dial-A-Garden is featuring a special three week series on selecting and planting fall bulbs. Topics for the last week of the series include:

Friday, Sept. 24 and week-end—"Home Forcing of Spring Flowering Bulbs."

Monday, Sept. 27—"Naturalizing Bulbs."

Tuesday, Sept. 28—"Planting Bulbs."

Wednesday, Sept. 29—"Arranging Bulbs With Other Flowers."

Thursday, Sept. 30—"A Little History of Bulbs."

CHICKEN is still SPECIAL on TUESDAY NIGHTS

CAPTAINS TABLE



All you can eat of Deep-fried Chicken, French Fries, Biscuits and Honey, plus a trip to our delicious Salad Bar.

\$2.95

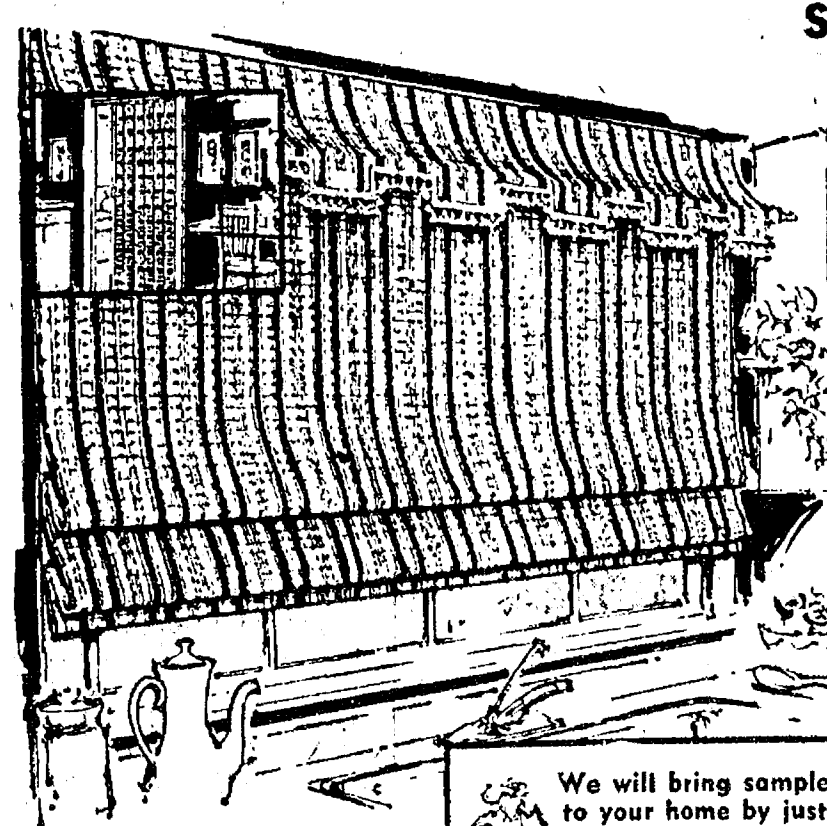
The Captains Table
8093 Main St., Dexter
426-3811

Mon.-Wed. 6 a.m.-9 p.m.
Thurs., Fri., 6 a.m.-10 p.m.
Saturday, 7 a.m.-9 p.m.

NOW SERVING
Spaghetti and Meat Ball Dinners
Includes Salad and Roll
EACH SATURDAY EVENING

Merkel
HOME FURNISHINGS

... custom made-to-measure shades - draperies 20% off



We will bring samples to your home by just calling: 475-8621

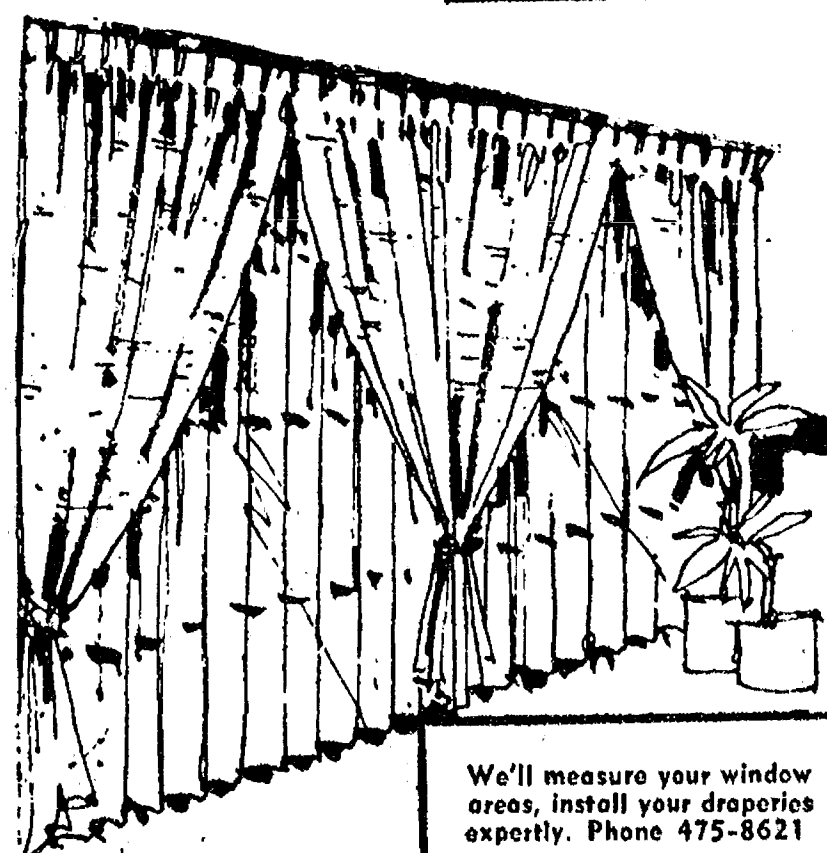
WOVEN WOOD SHADES CREATE A CRISP LOOK

Beauti-Vue shades of interesting woven woods blended with colorful man-made yarns filter light gently, lends decor interest and add a look of uncluttered crispness to windows. We will measure your windows and install your shades at a slight minimal fee. View samples at Merkel or in the comfort of your own home.

20% off

MADE-TO-MEASURE CUSTOM DRAPERIES

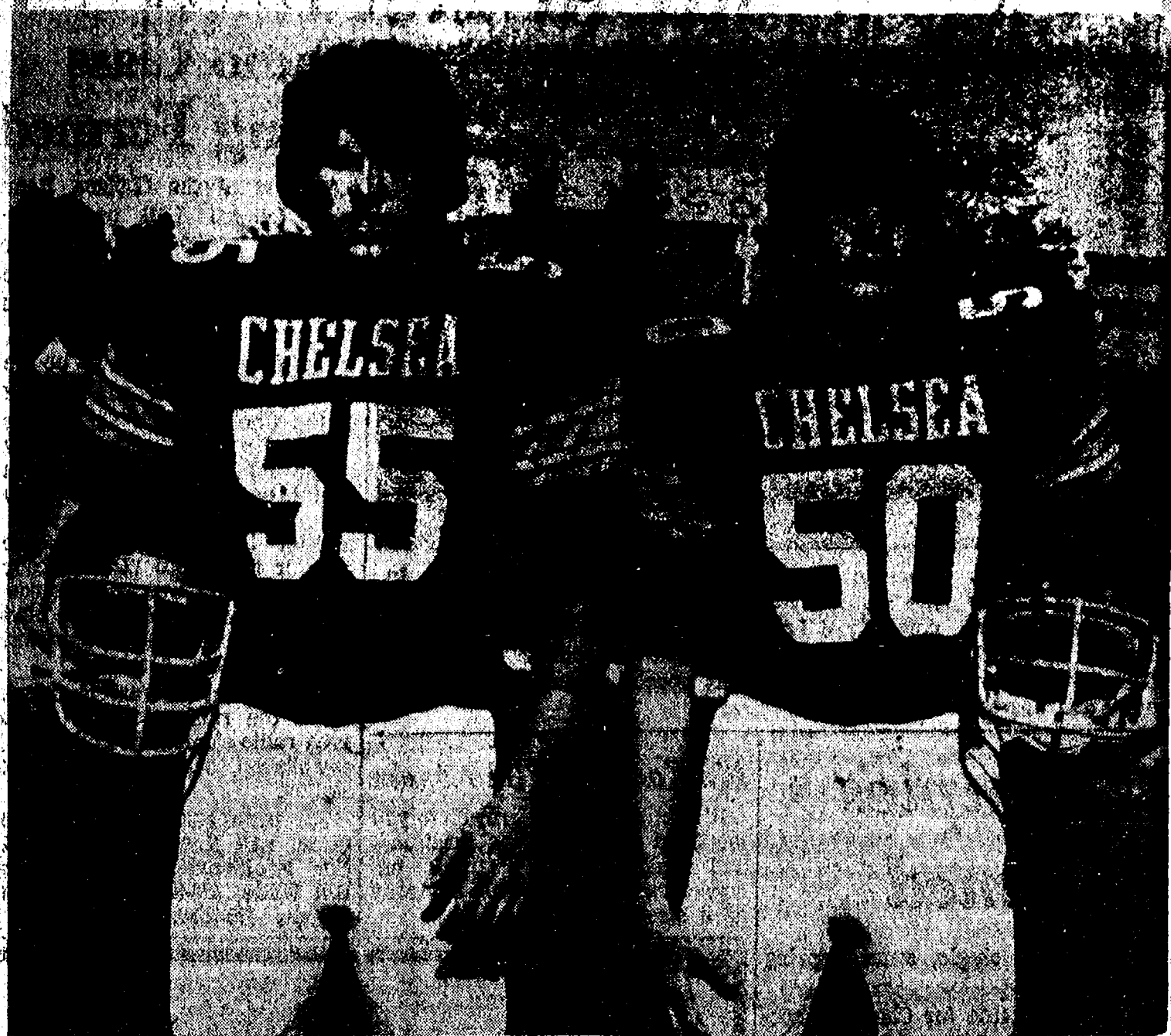
Famous Sklare open weave casements, antique satins, sheers... in solids or prints. Select the fabric in your home or at Merkel's. We will aid you in window measurement and install your custom-made draperies expertly. Limited time offer at 20%... gain important savings now.



We'll measure your window areas, install your draperies expertly. Phone 475-8621

CHELSEA: Main Street, Open Mon., Fri. 'til 9. Phone 475-8621
TECUMSEH: Chicago Blvd, Open Fri. 'til 9. Phone 517-423-2205

Gridders of the Week



VICTOR VERCHEREAU (55), guard, is a highly experienced football player, having played on Chelsea teams since 7th grade. Beginning with intramural football, he advanced through the ranks of freshman, junior varsity, and now varsity. A high point in his outstanding career came last year when he led his team in tackles against South Lyon, bringing down a total of 17 gridders. This is Verchereau's first year playing guard, a position he finds totally to his satisfaction. "As a guard," he stated, "I get to do a lot of pulling up and down the line. I'm always involved in lots of movement." Although the Bulldogs lost last Friday against Tecumseh, Verchereau does not think the game set his team back. In his opinion, Chelsea still has a good shot at the title. When asked what he enjoyed most about playing football, Verchereau replied, "being in a competitive sport." A member of Future Farmers of America, Verchereau has two sisters who both graduated from Chelsea High school. Both are now in college. He is the son of Mr. and Mrs. Joseph Verchereau of 10397 Hadley Rd., Gregory.

DON HARRIS (50), has played center for Chelsea since he first began his football career playing on the intramural team. The CHS junior was the

only Bulldog grinder to block a punt each year in his last two years of play on both the freshman and junior varsity squads. Harris feels he must have inherited some of his football talent from his father, Donald, who made the varsity team years ago, while still in 8th grade. Harris, who has played together as a team with Verchereau for the past four years, said the two still work out plays together to give Chelsea an ultimate advantage against their opponents. Contemplating last week's defeat against Tecumseh, he stated, "Since Tecumseh was non-league, we still have a good chance to take the conference title. All that has to be done is for the offense line to get together, that way we'll go a long ways. We weren't aggressive enough, our defense didn't get off the line, and Tecumseh, who was faster off the line, just blew us back." In football, Harris anticipates the aggressiveness of the game and "the chance to hit somebody" when he takes to the field. Outside of football, he is active in Future Farmers of America. He has a sister, Jeanette, who recently graduated from CHS, another sister, Donna, in kindergarten, and a brother, John, who is a 5th grader at South school. John, like his brother, wants to play football. Harris is the son of Mr. and Mrs. Donald Harris of 1221 Sugar Loaf Lake.

School Board Briefs

In a regular meeting of the Chelsea Board of Education Monday evening, Sept. 20, present were: Haselschwardt, Schafer, Feeney, Hodgson, Daniels, Stirling, Superintendent Cameron, and Business Manager Mills. Guest was Charles Kelly.

Meeting called to order at 8:10 p.m. by President Haselschwardt. Minutes of Aug. 30, and Sept. 7 meetings were approved as presented.

The following bids were received for school bus fleet insurance: Farm Bureau, \$8,071.13; State Farm, \$4,690.18. The board accepted the low bid as submitted by State Farm Insurance, Wallace Wood, agent.

1974 Building and Site bills of \$80,608.34 were approved for payment.

The resignation of John Hyatt as counselor at the Beach Middle school was accepted effective Sept. 20.

Correspondence was received from Andrew Ford of the Washtenaw Community College expressing thanks for the use of classrooms on a fee basis for college classes.

Copies of the resolutions to be considered by the Michigan School Boards Association were presented to members.

Meeting adjourned at 10:30 p.m.

Girls Swim Meet

(Continued from page one)

week in their season opener but that meet has been delayed until later in the season. They now must face Milan, the favorites for the state championship, in their season opener. The meet will be at home in the Beach Pool on Tuesday, Sept. 25, at 4 p.m.

The current fad in films seems to depict all parents as morons gabbling constantly about nothing. The film makers apparently know their market—the younger generation.

Your house is the biggest investment you're ever likely to make. When it comes to protecting it with paint, don't settle for anything less than...

Dutch Boy Latex House Paint

Pure acrylic latex to stay white longer, keep colors brighter, stay good-looking longer. Get more years to the gallon with Dutch Boy Latex House Paint.



Try Our New Super White Exterior Oil Alkyd House Paint

Same price as our regular white.

MERKEL
HOME FURNISHINGS

American Legion Post 557
DANCE
SATURDAY, SEPT. 25
9 p.m. to 1 a.m.

JIM GAKEN
and
THE RESEARCHERS

Dexter
American Legion Home
Members and Guests welcome

Thinking CARPET?
Think **SCHNEIDER'S**

Visit the wonderful world of carpeting at Schneider's, one of the area's finest, full-service carpet stores, conveniently located in West Ann Arbor on Wagner Road between Jackson and Liberty.

Schneider's carries a broad selection of quality, name-brand carpets at prices consistently among the lowest in the entire area. Try us!

662-9332

OPEN MON & FRI NIGHTS TIL 8:30 PM

SCHNEIDER CARPET CO. INC.

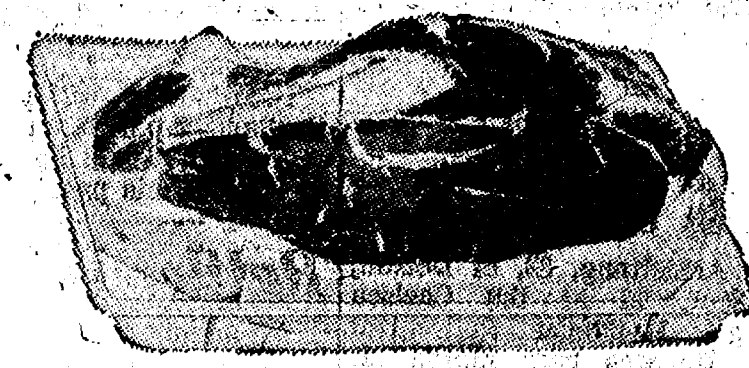
745 S. WAGNER RD. ANN ARBOR

Jiffy market
Big Enough To Serve You... Small Enough To Know You!

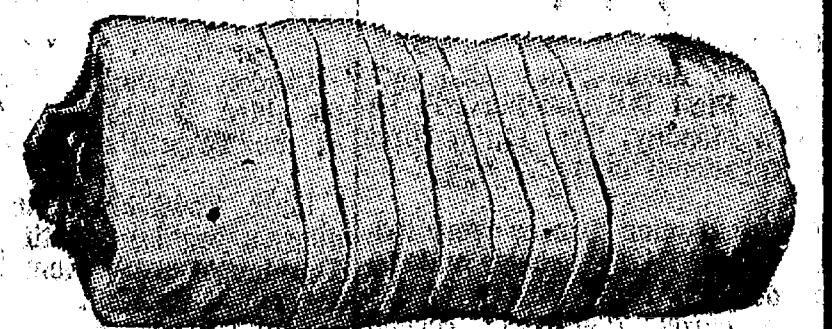
PHONE 475-1701

SALE PRICES GOOD SEPT. 23-26, 1976

TOP VALUE FOODS • GUARANTEED SATISFACTION • COURTEOUS SERVICE
COMPLETE FRESH MEAT DEPT. • USDA CHOICE BEEF • THE FINEST OF FRESH PORK



U.S.D.A. CHOICE BEEF
SIRLOIN STEAK
\$1.69 lb.



YOUNG PORK, LEAN - TENDER
QUARTER PORK LOINS
Sliced into 9 to 11 chops
\$1.29 lb.

COLBY - LONGHORN, AT MEAT COUNTER
STORE CHEESE Random Weights Per Lb. **\$1.27**

FARMER PEET'S Chunk Bologna 79¢ lb.	U. S. GRADE A TURKEYS 16-18 lb. Avg. 59¢ lb.	FARMER PEET'S LARGE SLICING SAUSAGE \$1.09 lb.	U.S.D.A. CHOICE BEEF STEW \$1.29 lb.
---	--	---	--

U.S.D.A. GRADE A WHITE
FRESH EGGS Med. Size 1 Dozen **59¢**

WESLEY'S QUAKER MAID POPSICLES 12 Twin Treats 59¢	Way Baking - Holsum HOT DOG BUNS or Hamburger Buns 8-Ct. Pkg. 49¢	PROGRESSO EXTEND 'N FLAVOR GROUND BEEF MIX Pepper Steak Flavor 3.1-Oz. Box 19¢	FARM MAID FRESH ORANGE JUICE 1/2 gal. 59¢
---	--	--	---

FARM MAID HOMOGENIZED
MILK Gallon **\$1.39**

U. S. NO. 1 Michigan Potatoes 10 lbs. 69¢	JOHNSON'S Baby Shampoo 1-Pt. Bottle \$1.99 SAVE \$1.00	U. S. NO. 1 COOKING ONIONS 12¢ lb.	SHUR-GOOD COOKIES Fudge or Vanilla Cremes 2-Lb. Pkg. 89¢
---	---	--	---

WONDER
COUNTRY STYLE BREAD 1 1/4-Lb. Loaf **39¢**

JIFFY MEAT SERVICE
CUSTOM CUTTING, WRAPPING, FREEZING.
QUICK SERVICE ON BUTCHERING — YOUR BEEF OR OURS.

★ U.S.D.A. CHOICE SIDES OF BEEF
★ LOCAL FARM GRAIN FED BEEF AVAILABLE
★ FRONTS - HINDS - WHOLE RIB - WHOLE LOINS

16-Oz. No-Return Bottles
COCA-COLA
8 pac \$1.29

Open With Complete Service, 7 Days A Week
7 a.m. MORNING to 10 p.m. NIGHTS
Sale Prices SEPT. 23 Thru Sept. 26

Candidates Night Sponsored Oct. 8 By VFW Post
National, state and county candidates for office in the Nov. 2 election have been invited to appear at Candidates Night, Friday, Oct. 8, by the sponsoring Grafton-Hara 314-E. Liberty St., Ann Arbor.

REBUILT PARTS
Save money on guaranteed rebuilt parts for cars and light trucks.

REBUILT ALTERNATORS	REBUILT FUEL PUMPS
REBUILT STARTERS	REBUILT DISTRIBUTORS
REBUILT DISC BRAKE CALIPERS	REBUILT CARBURETORS
REBUILT BRAKE SHOES	REBUILT CLUTCHES

All rebuilt parts carry a full 90-day guarantee.

"Chelsea's full Service-All Service Parts Store for Over 15 Years"

Boyer
AUTO SUPPLY INC.

108 E. MIDDLE STREET • FREE PARKING AT REAR • PHONE 475-1366

1976-1977

Community Calendar

North Lake Co-operative Nursery, Inc., parents' meeting Thursday, Sept. 23, 8 p.m. at the school. Business meeting, refreshments, and speaker Howard Wilson, Chrysler engineer, on the topic, "Car Safety and Your Children." Wilson will show a film, answer questions, and have car seats on display.

Washtenaw Genealogical Society, Sunday, Sept. 28, 2:30 p.m. at the Museum of the Dexter Historical Society, 3443 Inverness St., Dexter. Subject of the meeting: "What Is Your Problem?" Persons wishing individual help should arrive at 1 p.m. Guests are welcome.

Special education parents' group meeting Sept. 27, 7:30 p.m., in Room 204, Chelsea High school. Call Gladys Buck, 475-2609, for information.

Young Homemakers picnic, 1 p.m. at Pierce Park. First meeting is Sept. 23 at the home of Arlene Bareis. Bring a gift for secret pals.

Woman's Club rummage sale, Thursday, Sept. 30, and Friday, Oct. 1, in the office of the Longworth Plating Co. Anyone having anything for pick-up, call Joyce Vogel, 475-1568.

Chelsea Area Historical Society September meeting has been cancelled. First fall meeting will be 8 p.m. Monday, Oct. 11, in First Congregational church.

Chelsea Senior Citizens every Friday at St. Mary school hall on Congdon St. First Friday of the month, cards, 7:30 p.m.; second Friday of the month, cards, 7:30 p.m.; third Friday of the month, pot-luck and cards, 6:30 p.m.; fourth Friday of the month, business meeting and cards, 7:30 p.m.; if there is a fifth Friday of the month, cards, 7:30 p.m.

Dexter-Chelsea LaLeche League, 8 p.m. Sept. 27 at the home of Jan Knobloch, 980 Ridge Rd., Chelsea, phone 475-9254. Topic: "Advantages of Breast Feeding to Mother and Baby."

Flea Market, North Lake United Methodist church, beginning May 8 and every Saturday thereafter, 10 a.m. to 4 p.m. Lunch counter. Dealers wanted.

Chelsea Co-op Nursery applications for 1978-79 classes are now being taken. For information, call Leslie Bowers, 475-1401.

Chelsea Child Study Club, Sept. 28, 8 p.m., at the home of Nancy Grau, 737 S. Main. Bonsai workshop. Bring plant container.

Modern Mothers plant party, 8 p.m., Sept. 28, at the home of Lois Shively. Members and guests welcome.

Town and Country Woman's Club 7:30 p.m., Tuesday, Sept. 28, at the home of Pauline Porath.

Olive Lodge No. 106 F&M, E.A. Degree, 7:30 p.m. Tuesday, Sept. 28, at the Temple.

Child birth preparation classes, LeMaze method, are being held at Chelsea Community Hospital Tuesday evenings. Contact Dee Burkel, 475-9316, for information.

Rogers Corners Study Group Wednesday, Sept. 28, 8 p.m., at the home of Mrs. Brian Wenk. Note change of date, reveal secret pal.

Attention women bowlers! The first meeting of the Ann Arbor Women's Bowling Association 1978-79 season is Sunday, Sept. 26, 8 p.m., at the Ann Arbor Moose Lodge, 390 S. Maple Rd. All women bowlers are invited to attend.

Lyndon Township Board meets the third Thursday of the month at the Town Hall at 7 p.m.

Lima Township Planning Commission regular meeting the third Tuesday of every month, 8 p.m., at the Township Hall.

Sharon Township Planning Commission regular meeting the third Wednesday of each month.

Sharon Township Board regular meeting first Thursday of each month.

Lyndon Township Planning Commission meets the second Thursday of the month at the Township Hall at 8 p.m.

Sylvan Township Board meeting the first Tuesday of the month, at 7 p.m., at Sylvan Township Hall.

Lima Township Board regular meeting the first Monday of the month, 8 p.m., at Lima Township Hall.

American Legion Hospital equipment is available by contacting Guy Freysinger at 475-1961.

DEATHS

Ottelia Sdunek

Ex-New Hudson Resident Dies at Methodist Home

Ottelia Sdunek of New Hudson died Sept. 19 at the Chelsea United Methodist Retirement Home at the age of 96. She was born in Dulin, Germany, on Sept. 17, 1880, to Fritz and Wilhelmina Strick Sdunek.

Miss Sdunek came to the United States in 1890 at the age of 10. She was a graduate of Albion College in 1908, and taught in the Jackson school system for a number of years before retiring.

Following her retirement, she moved to New Hudson where she was a member of the New Hudson United Methodist church. In 1967, she moved to the Chelsea United Methodist Retirement Home.

When she moved to the Chelsea Home he donated her former home and land to the New Hudson United Methodist church. The new United Methodist church was then built on her land and Miss Sdunek was honored with the privilege of laying the cornerstone for that church in 1969.

She is survived by three cousins. One brother and one sister preceded her in death.

Funeral services were held Sept. 21 at 1:30 p.m. in the Chelsea United Methodist Retirement Home Chapel, with the Rev. Robert A. Mitchinson of the New Hudson United Methodist church officiating. Burial followed in New Hudson Cemetery, New Hudson.

Funeral arrangements were by the Staffan Funeral Home.

John Armstrong

Taught for 38 Years in Detroit University Schools

John Armstrong, 82, of Detroit, died Sept. 18 at the Chelsea United Methodist Retirement Home. He was born March 11, 1894, in St. Johns, New Brunswick, Canada.

Mr. Armstrong had been a teacher for the Detroit University school system, now the Grosse Pointe University school system, for 38 years.

He was a member of St. Mark Methodist church, Detroit, and a member of the Masons for 50 years.

He is survived by three daughters, Mrs. Brayton (Carol) McClelland, Jr., of Orchard Lake, Mrs. Frank (June) Gornick of St. Clair Shores, and Mrs. Edward (Joyce) Cole of Birmingham; and one sister, Mrs. Raymond Arnold of West Palm Beach, Fla. One brother and one sister preceded him in death.

Funeral arrangements were by the Staffan Funeral Home with a memorial service to be held at a later date.

Memorial contributions may be made to the Chelsea United Methodist Retirement Home Building Fund.

Please Notify Us In Advance of Any Change in Address

JV Gridders Lose Opener To Tecumseh

Chelsea's JV gridders suffered a defeat at the hands of Tecumseh in their football opener Friday, Sept. 17, as Tecumseh surged forward in the final three minutes of play to gain 12 points and rout the Bulldogs, 20-6.

Tecumseh scored on a 35-yard run late in the first quarter, and ran for the extra two points, to go up on the scoreboard, 8-0. With seven minutes left in the game, Chelsea's Jeff Eibler made a great catch and collected a touchdown for the home team. When the extra point pass failed, the score held at 6-8, with Tecumseh in the lead.

A 35-yard run by Tecumseh with three minutes left to go, widened their lead to 14-6. An attempt to run the ball for extra points failed, but with only 35 seconds remaining, they scored once again on a 21-yard run, failed to carry the ball for an additional two points, and settled for the 20-6 victory.

Leading tacklers for Chelsea were Tim Bareis and Scott Powers, by Lucas Lovely, 8; Jessie Coburn, 8; Don Gerstler, 7; Shawn Murphy, 6; Chuck Young, 6; Scott Price, 5; Joe Keiser, 5; Ben Kincaid, 5; Steve Marriott, 4; and Jeff Eibler, 4.

According to Coach Jon Schaffner, Chelsea quarterback Jessie Coburn did a fine job of passing under windy and rainy conditions, as he completed 9 out of 16 throws for 90 yards. Jeff Eibler caught seven passes for 70 yards.

The Bulldogs will play again at Portland, 7 p.m. Thursday (today), Sept. 23, and will be eager to win in light of this past week's defeat.

Rattler Bite...

(Continued from page one)

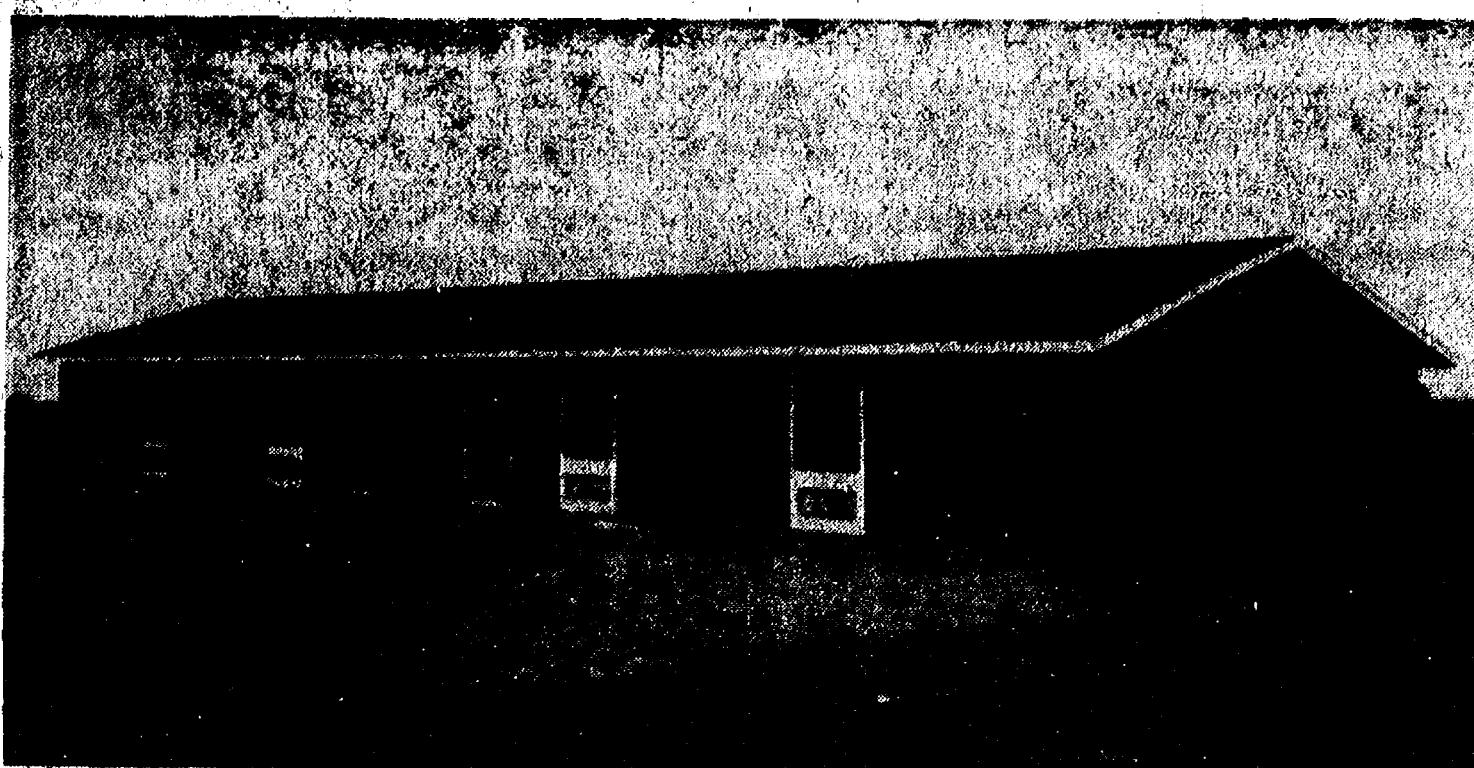
hospital by his brother for immediate treatment.

An incident which occurred while on the way to the hospital remains strongly etched in Brown's memory. Driving past the Chelsea Police station, Brown said, his brother noticed a Washtenaw County Sheriff's Department vehicle parked on the street with a deputy inside. Because traffic was quite heavy, Brown's brother stopped his car and asked the deputy for a police escort to the hospital. The deputy replied, "Take your time, drive slowly, and you'll make it there." He refused to undertake the escort.

Fortunately, the deputy proved correct in his assessment of the situation, although Brown, in intense pain at the time, was quite taken aback by the officer's refusal to help.

Recovery for Brown is now almost complete although his arm remains swollen. Last year, Brown and his brother killed a Massasauga rattlesnake with 14 rattles, in the same general area on Bush Rd. where the snake which bit him was found.

One of the most misleading and confusing factors in any national election is the forecasts.



SCHOOL BUILDING DEDICATION: On Sept. 28, North Sharon Bible church is planning a very special 11 a.m. service. The Rev. Charles Hurley, principal of Faithway Baptist school in Ypsilanti, will be speaking in this service. The Rev. Hurley is a graduate of Bob Jones University and has 450 students enrolled in Faithway Baptist school. In this service, North Sharon will be dedicating their new school building. Sunday school is at 10 a.m. and church is at 11 a.m. The public is welcome to participate in this special occasion.

CHS Special Olympics Soccer Team Formed

The newly-formed CHS Special sports to a single, annual spring Olympics soccer team, coached by Nancy Oswald, will kick-off the fall season Thursday (today), Sept. 23, with a 12:30 p.m. match at Community Mental Health, Ann Arbor.

Starting forwards are Leonard Carlson, Steve Lawrence, Chris Williams, Glenn Passow, and Kathy Buck. Defensesmen are Barbara Jedeke, Ryan Sweeney, and John Winans, all halfbacks, assisted by Kathy Young and Lori Brown, both fullbacks. Patty Brady and Sue Armstrong are goalkeepers. All teams in the league are co-ed.

Throughout the season, the team will travel to several area schools to compete for trophies and Special Olympic honors to add to the group's ever expanding collection.

Competitive soccer was introduced to the Special Olympics program this fall as part of reorganization efforts developed to emphasize year-round physical fitness. In former years, the program had limited competitive

It's Football Time Again

It's time again for crowds to yell for hard hitting on the gridiron—and applaud nicely when the unconscious "victim" is carried away on a stretcher.

Electronics, Radio Class Being Formed

As part of the Chelsea Recreation Council Fall program, a class will be conducted covering radio theory, Morse code practice, and FCC Regulations for persons interested in amateur radio.

The first meeting will be held Tuesday, Sept. 28, at 7:30 p.m. in the Chelsea High School Electronics Room. This meeting will be an informal gathering to acquaint persons with the purpose and outline of the class and to register those wishing to enroll. Fee for the 10- to 12-week course is \$10. The course will include a license examination for novice class applicants upon completion of the weekly sessions.

If sufficient interest is expressed in the radio class, a Chelsea area radio-electronics club may be established, complete with a local station.

To pre-register for the program, call Russ Pichlik, 475-8328. For additional information, call Bill Wade, 475-8109, or Bill Altenberndt, 475-7938.

WANTED

SUBSTITUTE BUS DRIVERS

Phone 475-9131 or 475-7647

CHELSEA SCHOOL DISTRICT

BIRTHS

A son, Daniel Glyn, to Mr. and Mrs. Howard (Bucky) O'Dell of 1051 1/2 N. Main St., on Friday, Sept. 17 in St. Joseph Mercy Hospital, Ann Arbor. Maternal grandmother is Mrs. Doris Reilly of Manchester, and paternal grandparents are Mr. and Mrs. Hurlsh O'Dell of Chelsea.

The best of the leisure suit looks



so smart don't be surprised if you wear it for business occasionally

Combine creative styling with quality fabrics and precise tailoring... add color, pattern and coordinated accessories... and you've got the best of all leisure suits. Plus comfort. Plus value. Plus versatility to wear here, there, everywhere!

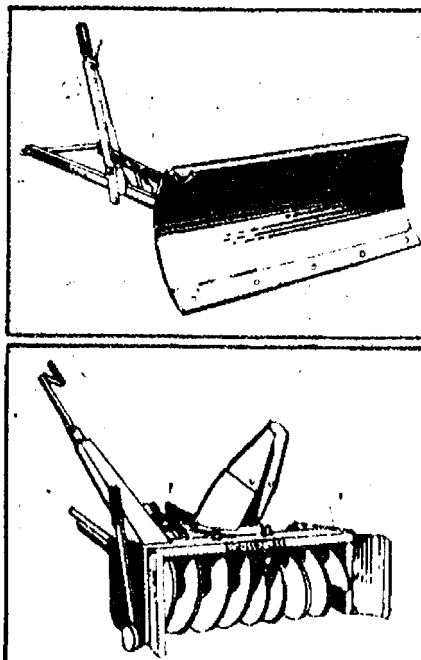
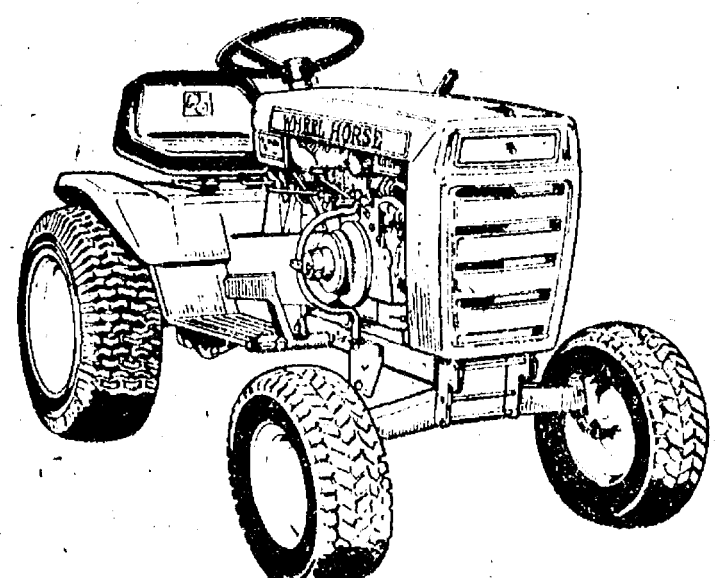
\$90

QUALITY BY **Curlee** \$45

STRIETER'S MEN'S WEAR

The Place To Go for Brands You Know

WHEEL HORSE lawn & garden tractors



WHEEL HORSE SNOW MOVERS

From the 8 h.p. to the 19.9 h.p., there's a Wheel Horse snow mover for any snow removal need. You'll move that snow without back-breaking work with a horse... Wheel Horse, of course!

GO GAMIBLES

110 N. MAIN ST., CHELSEA PH. 475-7472

RARE CLOSE-OUT SALE ON MAYTAG

Unusual Savings on all Discontinued Washers and Dryers. Limited Quantities!

Discontinued model savings

MAYTAG Heavy Duty WASHERS

- A-frame washer with Permanent Press cycle • Family size • b with Power Fin Agitator • Choice of 3 water levels • 3 water temps.

SAVE **\$20.00**

Discontinued

MAYTAG HaloofHeat DRYERS

- Permanent Press, regular and air fluff settings • Maytag HaloofHeat DRYERS dry clothes fast, gently • Easy to clean lint filter

SAVE **\$20.00**

REGULAR MODELS SALE PRICED THIS EVENT!

MAYTAG power module Dishwashers

- Revolutionary Power Module with exclusive Micro-Mesh filter • 3 level washing action virtually eliminates pre-rinsing • 3-hour passed capacity

SAVE **\$20.00**

When You Buy a DEPENDABLE MAYTAG We DON'T Try to Sell You an Extra Cost Service Contract

It's Maytags turn to do your dishes.

HEYDLAUFF'S

113 N. MAIN, CHELSEA PH. 475-1221

Recreation Dept. Offers Wide Variety of Courses for Fall Term

The registration deadline is fast approaching for persons interested in enrolling for fall classes currently offered through the Chelsea Recreation Department.

Most classes begin the week of Sept. 27, and run anywhere from 4 to 12 weeks, depending on the course. Registration is by phone with the instructor prior to the first class meeting.

Fees for all classes have been determined according to the course content, length of class and materials needed. All fees are to be paid at the first class meeting. A sufficient number of persons must be enrolled in each class to defray the cost of instruction or the class will be cancelled.

The following is a list of fall program courses, instructors, times, places, and fees.

COURSE: PATCHWORK I
Instructor: Mary Kumpf
8 weeks, beginning Monday, Sept. 27.
Time: 7-9 p.m.
Place: High School Home Ec. Room
Fee: \$10.
To register phone 475-1571.

COURSE: PATCHWORK II
Instructor: Mary Kumpf
8 weeks, Thursday, beginning Sept. 30.
Time: 7-9 p.m.
Place: High School Home Ec. Room
Fee: \$10.
To register phone 475-1571.

COURSE: MACRAME
Instructor: Gloria Greenleaf
6 weeks, Tuesday, beginning Oct. 19
Time: 9-11 a.m.
Place: Fair Service Building
Fee: \$10
To register phone 475-8005.

COURSE: CAKE DECORATING
Instructor: Dorothy Hafner
8 weeks, Thursday, beginning Sept. 30
Time: 7-9 p.m.
Place: High School Home Ec. Room
Fee: \$10
Class filled to capacity.

COURSE: AMATEUR RADIO
Instructor: Russ Pichlik
10 weeks, Tuesday, beginning Sept. 28
Time: 7-9 p.m.
Place: High School Electronics Room
Fee: \$10
To register phone 475-8328.

COURSE: POWDER PUFF MECHANICS
Instructor: Bud Janich
8 weeks, Thursday, beginning Sept. 30
Time: 5-7 p.m.
Place: High School Auto Shop
Fee: \$15
To register phone 1-429-5651.

COURSE: AUTO MECHANICS
Instructor: Bud Janich
8 weeks, Thursday, beginning Sept. 30
Time: 7-9 p.m.
Place: High School Home Ec. Room
Fee: \$10
To register phone 475-1571.

COURSE: PERSONAL TYPING
Instructor: Joanne Weber
8 weeks, Monday, beginning Sept. 27.
Time: 7-9 p.m.
To register phone 475-2741.

COURSE: BASIC INDOOR GARDENING
Instructor: Virginia Webb
Time: 7-9 p.m.
Place: High School Agriculture Room
Fee: \$8
To register phone 475-7231.

COURSE: LADIES NIGHT OUT
Instructor: Terry Schreiner
8 weeks, Monday, beginning Sept. 27.
Time: 8-10 p.m.
Place: High School Gym
Fee: \$8
To register phone 547-2536.

COURSE: SEWING CHILDREN'S CLOTHING
Instructor: Pat Dittmar
8 weeks, Monday, beginning Oct. 18
Time: 7-9 p.m.
(Continued on page 11)

Girls Varsity Cagers Split In Two Games

The Chelsea girls varsity basketball team defeated Stockbridge, 50-32, in their Thursday evening season opener, Sept. 16, but lost to Grass Lake in a follow-up game Sept. 21, by a score of 25-34.

In their face-off with Stockbridge, the home team showed much improvement over last year, according to coach Cheryl Turner. The game remained close until the final quarter when Chelsea began to dominate with increased speed and aggressive rebounding.

High scorer for Chelsea was Shelley Warren, who collected 16 points. Penny Collinsworth added 12, Tracy Nayker, 6, and Sue Heydlauff, Teresa Breza, and Nanette Push each netted 4. Lori Miles and Karen Reiser contributed the remaining 2 points each.

Across the court, high scorer for Stockbridge was D. Weaver with 11 points.

In contrast to their fine exhibition of play last Thursday, Chelsea's cagers fared poorly as they met with Grass Lake Tuesday.

Their shooting was cold and team rhythm was off, while the opposing Grass Lake team, aided by a height advantage, managed to play a strong, aggressive game.

High scorer for Chelsea was Penny Collinsworth with 8 points. Lori Miles had 6, Kim Moore, 5, Teresa Breza, 4, and Nanette Push, 2.

Chelsea is scheduled to play again tonight in an open game, and will travel to Novi Tuesday, Sept. 28, for another league challenge.

Swimmers' Parents Will Organize Chelsea Aquatic Club Tuesday

Chelsea Aquatic Club has scheduled a parent's organizational meeting on Tuesday, Sept. 28 in the Middle School Cafeteria at 7:30 p.m.

Purpose of the meeting will be to explain the aims, activities and competitive schedule of the club.

Also it is hoped that a parents club can be established to help provide support and manpower that will be needed for meet management of home meets and transportation to away meets.

The Chelsea Aquatic Club includes elementary, junior high and high school boys and girls totaling around 150 swimmers.

Parents of all these children and young adults are asked to attend. The success of this program will be severely limited if parents are not interested.

THE CHELSEA STANDARD

Second Section

CHELSEA, MICHIGAN, THURSDAY, SEPTEMBER 23, 1976

7-12



TENNIS AWARDS: The adult league of the Chelsea Recreation Department's summer tennis club program played their summer championship tournament Tuesday, Sept. 21. Winners of the event were Todd Sprague, men's "A" singles champion; Brian Lawton, men's "A" singles runner-up; Charles Matloff, men's "B" singles champion; James Collins, men's "B" singles runner-up; and Jon Schaffner and Duane Branch, men's "B" doubles champions. Placing for the women were Barbara Erickson, women's "A" singles champion; Ann Schaffner, women's "A" singles runner-up; Kristin Frey, women's "B" singles champion; B. J. Wenk, women's "B" singles runner-up; B. J. Wenk and Mary Vercher, women's "B" doubles champions; and Nita Mills and Ruth Dils, women's "B" doubles runners-up. Mixed doubles champions were Marian Sprague and Todd Sprague, while runners-up were Ann and Jon Schaffner. Pictured with their trophies, in the front row, from left, are Kristin Frey, Marian Sprague, Todd Sprague, B. J. Wenk, and Terry Schreiner, tennis director. Back row, from left, are Ann Schaffner, Jon Schaffner, Duane Branch, Barbara Erickson, James Collins, Nita Mills, Ruth Dils, and Charles Matloff.

Cross Country Team Comes on Strong

Chelsea's varsity and junior varsity cross-country teams burned up the turf as they logged two outstanding performances in meets during the past week. After placing high in the New Boston Invitational on Saturday, Sept. 18, both teams came back to defeat Jackson Northwest on their home course at Inverness on Tuesday, Sept. 21.

"It was one of our best invitational ever," coach Pat Clarke commented in praise of the race run by the CHS varsity harriers at the New Boston Invitational. The team placed sixth in a field of 19, scoring a team total of 160. Detroit Austin won the meet with 39 points to confirm their statewide, anticipated top-rated standing.

Leading the way for Chelsea was Rick Haller, who finished 19th. He completed the three-mile course with a time of 16:59. Closely behind him were Chelsea's Phil Frame, 22nd; Dave Dawson, 24th; Morris Johnson, 40th; and Dean Thompson, 55th.

Individually, an Anchor Bay runner was first to cross the tape in an elapsed time of 15:33. In junior varsity action at the invitational, the Bulldog JV harriers placed third as they brought in 128 points. Chelsea's Mike Beedenbender finished 11th, posting a time of 19:20. He was followed by Brian Herrick, 22nd; Mark Shippy, 23rd; Mark Beyer, 29th; and Jim Fitzsimmons, 43rd.

Tuesday's dual with Jackson Northwest featured several home squad runners turning in personal best times as they reversed Jackson's winning streak against Chelsea by defeating the visiting harriers for their first time ever with a score of 19-36.

Wrapping up first place was Chelsea's Rick Haller with a personal best time of 16:45 on the home course. Finishing the three-mile race behind him and scoring

SCHOOL LUNCH MENU

Week of Sept. 27-Oct. 1
Monday—Beef and noodle casserole, green peas, bread, butter, whipped Jell-O, milk.
Tuesday—All-beef hot dogs, buns, trimmings, french fries, chocolate cake, milk.
Wednesday—Peanut butter sandwich, tomato soup, crackers, chocolate éclair, milk.
Thursday—Ravioli, peas and carrots, bread, butter, rocky road pudding, cinnamon crisp cookie, milk.
Friday—Tacos, trimmings, vegetable, bean salad, rice dessert, milk.

WITHOUT SOAP
A race track is a place where windows clean people.

Metzger's German RESTAURANT
IMPORTED & DOMESTIC BEERS & WINES
COCKTAILS
NOW OPEN SUNDAYS
11:30 a.m. 'til 8 p.m.

For more information call 668-8987

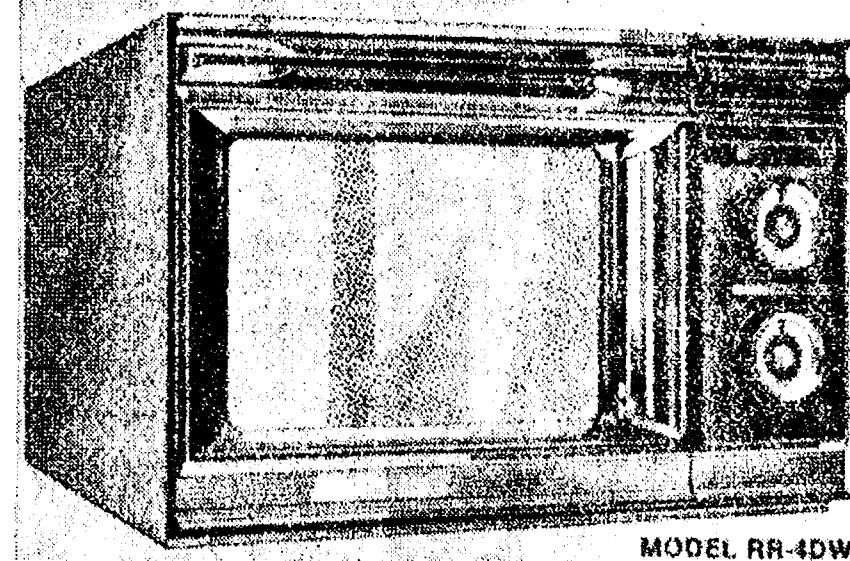
203 E. Washington, Ann Arbor
Between S. 4th & 5th Ave.

Saline Bicentennial Ball Tickets Still Available

The Saline Bicentennial Costume Ball, planned as a community extravaganza, will take place Oct. 9 at Farm Council grounds. Doors will open at 8 p.m. Guests will be entertained by the Saline Big Band, with floor space available for dancing. Tickets are available at Gambles and Dancer's for \$10 per couple. Those attending are asked to furnish their own refreshments.

When you're in the market for a microwave oven, buy the best...

Radarange
MICROWAVE OVEN
made only by **Amana**



Cuts cooking times by 75%.
Cooks a 5-lb. roast in 35 minutes,
bakes a potato in 4 minutes,
cooks hot dogs in 20 seconds.

Amana introduced microwave cooking into the home. The Radarange microwave oven ushered in a whole new era in cooking. And along with it, a lot of competition.

But the competition has nothing like the Amana Radarange microwave oven, and they never will. Because Amana holds exclusive patents on the Radarange oven. So, as much as the others would like to have the features that Amana has, they never will.

Is it any wonder more Radarange microwave ovens are sold than all other makes combined? We don't think so. Come in and see for yourself why the Amana Radarange is the best microwave oven you can buy.

If it doesn't say **Amana**, it's not a **Radarrange**.

Model Clearance Sale
Now in Progress

HEYDLAUFF'S
113 N. Main St. Ph. 475-1221

RICK'S MARKET

20490 M-52

"The Store with the Spartan on the Door"

Phone 475-2898

SPARTAN FRESH FROZEN FESTIVAL:
CHEF PIERRE
9" PUMPKIN PIE
2-Lbs., \$1.09
8-Oz.

SPARTAN WHIPPED TOPPING
9-Oz. 39c

APRIL HILL White Bread Dough
3 lbs. 59c

TOASTY TREAT WAFFLES
Pkg. of 6 \$1.00

SARA LEE Pecan Coffee Cake
11 1/2-Oz. \$1.19

64-OZ. NO-RETURN BOTTLES

COCA-COLA
65c

BORDEN'S OLD FASHION

ICE CREAM

Round Carton

1/2 gal. \$1.35

ECKRICH SMORGAS-PAK
\$1.29

BORDEN'S ICE CREAM BARS
6 pac 39c

SPARTAN WHITE BREAD
3 1 1/4-Lb. Loaves \$1.15

TUESDAY BAKERY SPECIAL: RICK'S WHITE BREAD . 49c

RICK'S HOT BREAD DAILY

Weekdays by 3:30 p.m. Sat. & Sun., by 10:30 a.m.

(QUANTITY RIGHTS RESERVED)

**Ads
Taken
Call 1 p.m.
Tuesday**

PUT IT IN THE WANT ADS FOR RESULTS

**Just
Phone
475-1371**

WANT ADS

The Chelsea Standard
WANT AD RATES
PAID IN ADVANCE—All regular advertisements, 75 cents for 25 words or less, each insertion. Count each line as a word. For more than 25 words, add 3 cents per word for each insertion. "Child" ads or low minimum, add 25 extra per insertion.
CHARGE RATES—Same as cash in advance with 25 cents bookkeeping charge if not paid before 1 p.m. Tuesday preceding publication. Pay in advance, send cash or stamps and save 5 cents.
DISPLAY WANT ADS—Rate, \$1.40 per column inch, single column width only. 8-point and 14-point light type only. No borders or boldface type. Minimum 1 inch.
CARDS OF THANKS or MEMORIALS—Single column width, 25¢ per insertion for 50 words or less; 3 cents per word, beyond 50 words.
COPY DEADLINE—1 p.m. Tuesday week of publication.
ERRORS—Advertisers should check their ads at the first publication. This newspaper will not be liable for failure to publish an ad or any typographical errors in publication except to the extent of the cost of the ad for the first week's insertion. Adjustment for errors is limited to the cost of portion of the ad wherein the error occurred.

FOR SALE — 1975 Ford pickup F-250, p.s., p.b., air. A real clean truck. Call 475-9265. x41
PIANO TUNING, Chelsea and area. Facilities for reconditioning and rebuilding. Used piano sales; reconditioned grands and verticals. E. Ecklund, 426-4429. x504

KLINK EXCAVATING
Buildozer — Backhoe
Road Work — Basements
Trucking — Crane Work
Top Soil — Demolition
Drainfield — Septic Tank
Trenching, 5" up
Industrial, Residential, Commercial
CALL 475-7631 x131f

STEP UP TO KOZMA CONSTRUCTION
And Step Down In Price
LICENSED BUILDER
FREE ESTIMATES
COMPLETE CONSTRUCTION SERVICES
CALL LEN KOZMA 475-7452 x291f

HELP WANTED
Acme-Gridley operators with 3 or more years' experience for day or night shift. Up to \$6.58 days, \$6.83 nights. Excellent benefits.

K & E Screw Products Co.
8763 Dexter-Chelsea Rd., Dexter
Phone 426-3941 x15
WANTED HAY — First and second-cutting hay. Must be well baled. Charles Trinkle, call 475-7798, evenings. x151f

Your Opinion of Us
is our most valued asset.

Staffan Funeral Home
"Funeral Directors for Four Generations"
124 PARK STREET PHONE GR 5-1444

WANT ADS

PATCHING and PLASTERING
Call 475-7488 x33f
Custom Built Homes
Oh! We Remodel too
U—can count on us
N—o Job Too Small
T—rim Inside & Out
R—ough-in Only If
Y—ou Want to Finish
S—iding Aluminum, 5" Gutters
I—mmediate Attention
D—ALE COOK & CO.
E—stimates, Free

BUILDERS
Please Call 475-8863
DALE COOK x171f

GEORGE W. SWEENEY HEATING
Licensed Contractor
Furnaces, air conditioning, and sheet metal work.
Phone 475-1867 x201f

CAR RENTAL by the day, week, end, week or month. Full insurance coverage, low rates. Call Lyle Christwell at Palmer Motor Sales, 475-1301. x251f

Fireplace Builder
Field stone mason, block and brick mason, tuck pointing.
FREE ESTIMATES
Call 475-8025 after 3 p.m.
Patrick Grammatico x7401f

J. R. CARRUTHERS
LICENSED RESIDENTIAL BUILDER
CUSTOM HOMES
ADDITIONS/FIREPLACES
PATIO
ROOFING/SIDING/REPAIRS
475-7234 CHELSEA x301f

LOWREY BERKSHIRE deluxe organ, with home study course. \$1,800. Ph. 994-6194. x521f
HORSESHOEING — Experienced horseshoer now shoeing in area. Bob Smithers, (517) 851-8479. x451f

Lakefront - 1 Acre
UNIQUE, contemporary, builder's home with 200 ft. of prime frontage on North Lake. Private residential area with mature trees and garden area. 22 minutes from Ann Arbor. Immediate occupancy. Chelsea schools. \$72,500. Owner, 475-9569. x15
FOR SALE — Magnavox stereo with AM-FM radio, record player with storage cabinet. Ph. 426-4959. x15

YES
WE ARE MAKING
LONG-TERM FARM
REAL ESTATE
LOANS
SEE US
Federal LAND BANK Association
P. O. Box 7006
Ph. 769 2411 3645 Jackson Rd.
Ann Arbor, Mich. 48103

WANT ADS

LEONARD REITH
Master Plumber
Licensed Electrician
Hot Water Heat
18238 N. Territorial Rd.
Chelsea, Mich. 48118
Phone: 475-2044 x521f

WATERLOO REALTY
SMALL HOME with 2 enclosed porches, 1 bedroom, living room, dining room, bath, partial basement, oil forced air heat. In Village of Munith. \$11,500, with \$2,500 down on land contract.

ONLY \$20,000! 3-bedroom home on one floor, walk-out basement, new deep well, new septic system, on over 1/2 acre near Webberville. An excellent buy.
24'x32' HOUSE, with full basement, new wiring, plumbing, new Lennox furnace, garage, on 12 acres, 660 ft. road frontage which can be divided. Chelsea schools. \$40,000.

2 ACRES, lightly wooded, per acre no problem. Waterloo township. \$7,000.
4.2 ACRES, pretty rolling land, nice terrain for walk-out basement. Near state land. Waterloo township, Chelsea schools. \$11,000. Land contract possible.
40 ACRES, all tillable, ideal for truck garden, creek for irrigation, located on state highway. Some buildings. Waterloo township. \$34,500. Land contract possible.
NEAR DEXTER-PINCKNEY ROAD — 110' acres, hills, trees, some marsh, semi-private lake, good location. \$1,500 per acre.
LAKEFRONT LOTS — 45 minutes west of Chelsea, from \$7,000 to \$12,500.
COMMERCIAL — Party store in Waterloo Rec. Area, S.D.M. license, 2-bedroom apartment, includes real estate and fixtures. Superb location, busy resort area.

WATERLOO REALTY
355 Clear Lake
JOANN WARYWODA, BROKER
Phone 475-8674
Evenings:
Jerry Gondek 475-8235
Paul Erickson 475-1743
Carol Lakatos 475-7123
Sue Lowe 475-2377 x151f

FOR SALE — AKC Brittany puppies. Born June 23, 1976. Parents excellent hunters. Wormed. Call (517) 769-2237, Jackson. x15
FOR SALE — Ashley wood stoves. Hackney Hardware, 8105 Main St., Dexter, 475-4009. x16
CLOSE OUT — Blue Simplicity Rottiel, 3 h.p., reg. \$299.95, sale price, \$199.95. 5 h.p., reg. \$365.95, sale price, \$239.95. Also 26 in. riding lawn mower, reg. \$649.95, sale price, \$499.95. Hackney Hardware, 8105 Main St., Dexter, 426-4009. x16
\$39,900 — Immediate possession, edge of village, 3-bedroom, dining el, family room, fireplace.
\$35,900 — Village of Chelsea, 3-bedroom, dining room, country kitchen, family room with fireplace, screened porch, new garage.
\$33,900 — 3 bedrooms, dining room, 2-car garage with space for workshop, Stockbridge schools.
\$45,000 — Lovely year-round home on Wolf Lake, 3 bedrooms, fireplace, dining room, 1 1/2 baths, also extra lot, Grass Lake schools.
\$32,500 — 3 bedrooms, dining room, fireplace, 1 1/2 baths, study, corner lot, Pinckney schools.
\$52,900 — 4 bedrooms, tri-level, dining room, family room, 1 1/2 baths, fireplace, 2-car garage, lovely setting, Pinckney schools.
\$46,500 — Wooded setting, approx. 1/2 acre, 3 bedrooms, dining room, family room, 1-car garage, sharp house, Pinckney schools.
\$95,000—147 acres, Chelsea schools, remodeled farm house, 3 bedrooms, 1 1/2 baths, family room, dining room, fireplace, Waterloo Recreation area.
BUILDING SITES: 5 acres, 10 acres and 40 acres, Manchester, Chelsea and Grass Lake schools.

FRISINGER REALTORS
Chelsea 475-8681
Eves:
Herman Koenn 475-2843
Bob Koch 426-4734
Paul Frisinger 475-2821
George Frisinger 475-2803 x141f
WANTED FROM OWNER — Farm property for cash or terms. Call (313) 399-0262, between 8 a.m. and 5 p.m. x15
MUST SELL — 1973 Monterey mobile home, 2 bedrooms, washer and dryer, stove, refrigerator, drapes, cement steps. 10'x7' metal shed included. Call (517) 546-7439 after 7 p.m. Assume mortgage of \$8,500 with negotiable down payment. x16

WANT ADS

VACUUM CLEANERS
Authorized Electrolux sales and service.
James Cox
428-8444, or 428-8686
118 Riverside Dr., Manchester 48118

Complete Body Repair Service
Bumping - Painting
Windshield and Side Glass Replacement
Free Pick-up & Delivery
Open Monday Until 9
CONTACT DON KNOLL FOR FREE ESTIMATE

Village Motor Sales, Inc.
CHRYSLER - DODGE PLYMOUTH - DODGE TRUCKS
Phone 475-8691
1185 Manchester Rd., Chelsea
Hours: 8 a.m. to 5:30 p.m.
Tues. thru Fri. Until 9 Monday, 9 a.m. to 1 p.m. Saturday x141f

Headquarters for
RED WING WORK SHOES
Foster's Men's Wear x401f

For Rent OFFICE SPACE IN DEXTER
NEW, carpeted, air-conditioned, up to 890 sq. feet. Reasonable. Call 426-3933, 9 a.m.-5 p.m. x11f

PINTO '73 Runabout—Factory air. Blue Book price \$1,775. Our price \$1,295. Palmer Ford, Chelsea, 475-1301. x14

CHELSEA
\$39,900 — Immediate possession, edge of village, 3-bedroom, dining el, family room, fireplace.
\$35,900 — Village of Chelsea, 3-bedroom, dining room, country kitchen, family room with fireplace, screened porch, new garage.
\$33,900 — 3 bedrooms, dining room, 2-car garage with space for workshop, Stockbridge schools.
\$45,000 — Lovely year-round home on Wolf Lake, 3 bedrooms, fireplace, dining room, 1 1/2 baths, also extra lot, Grass Lake schools.
\$32,500 — 3 bedrooms, dining room, fireplace, 1 1/2 baths, study, corner lot, Pinckney schools.
\$52,900 — 4 bedrooms, tri-level, dining room, family room, 1 1/2 baths, fireplace, 2-car garage, lovely setting, Pinckney schools.
\$46,500 — Wooded setting, approx. 1/2 acre, 3 bedrooms, dining room, family room, 1-car garage, sharp house, Pinckney schools.
\$95,000—147 acres, Chelsea schools, remodeled farm house, 3 bedrooms, 1 1/2 baths, family room, dining room, fireplace, Waterloo Recreation area.
BUILDING SITES: 5 acres, 10 acres and 40 acres, Manchester, Chelsea and Grass Lake schools.

FRISINGER REALTORS
Chelsea 475-8681
Eves:
Herman Koenn 475-2843
Bob Koch 426-4734
Paul Frisinger 475-2821
George Frisinger 475-2803 x141f
WANTED FROM OWNER — Farm property for cash or terms. Call (313) 399-0262, between 8 a.m. and 5 p.m. x15
MUST SELL — 1973 Monterey mobile home, 2 bedrooms, washer and dryer, stove, refrigerator, drapes, cement steps. 10'x7' metal shed included. Call (517) 546-7439 after 7 p.m. Assume mortgage of \$8,500 with negotiable down payment. x16

WANT ADS

Automotive Rust Proofing Cars and Trucks
Village Motor Sales, Inc.
CHRYSLER - DODGE PLYMOUTH - DODGE TRUCKS
Phone 475-8691
1185 Manchester Rd., Chelsea
Hours: 8 a.m. to 5:30 p.m.
Tues. thru Fri. Until 9 Monday, 9 a.m. to 1 p.m. Saturday x141f

Annual Chelsea FIREMEN'S BALL
Saturday, Oct. 2
at Fair Service Center
9:30 p.m. to 1:30 a.m.

Dancing to music by
THE RESEARCHERS
\$8.00 per couple
Tickets from any Chelsea Fireman or Kusterer's Food Market x16

1973 CHEV C10 1/2-ton pick-up—Automatic, power steering. Excellent one owner condition. Palmer Motor Sales, 475-1301. x14
FOR SALE — Ward's 14 h.p. variable speed garden tractor with 42-in. mower and snow blade. Excellent condition, \$800. Phone 475-2623. x15
PAPER DRIVE—Boy Scout Troop 476. Call for pickup, 475-1526, 475-1638 or 475-8130. x15

Demonstrators
'76 ASPEN SE station wagon, 318, auto., p.s., p.b., air cond., stereo, speed control... SAVE!
Used Trucks
'75 DODGE D-200, 318, 3-speed, p.b., 18,100 miles... \$3995
'75 RAMCHARGER, 2-wheel drive, 360, auto., p.s., p.b., air cond., roll bar, white wheels... \$5195
'74 DODGE CB-300 Kary van, 318, 3-speed, p.b. \$3295
'74 DODGE TRAVCO surfer van, 318, auto., p.s., p.b., carpeted... \$4295
'74 DODGE D-100, 318, auto., p.s., p.b., dual tanks... \$2995
'74 DODGE D-200 Club Cab, 318, auto., p.b., air cond., AM-FM, aux. tank, cover, 31,000 miles... \$3995
'73 CHEVY 1/4-ton, 4-wheel drive, 350, auto., p.s., p.b. \$2995
'71 CHEVY C-50, cab and chassis, 350, 4-speed, 8.25x20 — 10 tires... \$2195

Quality Used Cars
'74 DODGE Coronet 4-dr., 225, auto., AM radio, radial tires, 13,500 miles... \$2995
'74 PLYMOUTH Fury I 4-dr., V-8, auto., p.s., p.b., air... \$1195
'73 CHRYSLER New Yorker Brougham, 2-dr. hardtop, V-8, auto., p.s., p.b. power locks, air cond., radials... \$2395
'73 DODGE Royal Sportsman, 360, auto., p.s., p.b., air cond., AM-FM, aux. heater, speed control... \$3995
'72 DUSTER coupe, 6-cyl., auto., one owner... \$1195
'72 PLYMOUTH Fury III 2-dr. hardtop, 360, auto., p.s., p.b., air cond. \$1495
'72 CHEVY Nova 2-dr., 6-cyl., 3-speed... \$1795
'70 VALIANT 4-dr., 6-cyl., auto., p.s. \$595
'69 CHEVY 4-dr., V-8, 3-speed, low mileage... \$295
'68 OLDS 4-dr., V-8, auto., p.s., p.b., air cond., Michelin tires... \$495

Bushnell Realty
475-7180
LAKEFRONT COTTAGE on over half acre. A beautiful setting in Irish Hills area. Furnished. In nice condition. \$17,500.
NEW 3-BEDROOM pre-built home on blacktop. Basement. 2-car garage. On one acre. \$35,900.
REMODELED COUNTRY HOME on 10 acres. Income now or could be single family. Good location one mile from Chelsea. \$64,500.

Village Motor Sales, Inc.
CHRYSLER - DODGE PLYMOUTH - DODGE TRUCKS
Phone 475-8691
1185 Manchester Rd., Chelsea
Hours: 8 a.m. to 5:30 p.m.
Tues. thru Fri. Until 9 Monday x151f
FOR SALE
'70 BARRACUDA
\$150
Good Transportation
426-4001 Mon.-Thurs. after 6 p.m. x15
MOVING — Yard or porch sale. Some good things, a lot of junk. Sept. 24-25 from 10 to 5 p.m. 131 E. Middle St., Chelsea. x15

WANT ADS

FOR RENT—Fair Service Center for meetings, parties, wedding receptions, etc. Weekdays or week-ends. Contact John Wellnitz, phone 475-1518. x311f

NOW Full Time Complete Body Shop Service
Stop in For An Estimate
PALMER FORD
222 S. Main St.
475-1301 x271f

THUNDERBIRD 1972—Full power with air. Immaculate inside and out. Reference furnished. Palmer Ford, 475-1301. x14

THORNTON
CHOICE COUNTRY HOME — 4-bedroom brick ranch with walk-out basement, 3 1/2 baths, full basement and fireplace. Mint condition! On 10 acres.
GRACIOUS, SPACIOUS and better than new! On 6 1/2 acres of landscaped beauty. As you walk through this 2,900 sq. ft. home you will find 4 bedrooms, 2 1/2 baths, 3 fireplaces and a finished full basement. A true quality built home.
COZY AND CUTE 3-bedroom home with access to Patterson Lake. Great starter home with fireplace, fenced backyard and a hilltop setting. Only \$24,500.
NEW LISTING! Nice 3-bedroom home near Pinckney. Full basement and garage. On large lot with storage barn in back.
LUXURY HOME on 10 secluded acres. Custom built throughout with beautiful oak floors and matching cabinets and appliances in kitchen. Brick fireplace in living room, nice study, full basement, 3-car att. garage. Italian glazed tile in entry. Professionally decorated!

VACANT LAND
1.5 ACRES — Good building site with frontage on Simpson Rd. Only \$6,500.
LANEWOOD — Fully developed lots in Chelsea's finest subdivision. Your choice, \$8,800-\$10,300.
NORTH LAKE FARM — 1 to 9 acre building sites. Some wooded, some with lake privileges. \$12,500-\$18,500.
FOR SALE — Black dirt and peat mixture excellent for lawns, planters, shrubs, trees, by the yard or bushel. You pick up or we deliver. Also good clean fill dirt. Duane Landwehr, 19000 Cavanaugh Lake Rd., Chelsea 475-8480. x17

BUSHNELL
LAKEFRONT COTTAGE on over half acre. A beautiful setting in Irish Hills area. Furnished. In nice condition. \$17,500.
NEW 3-BEDROOM pre-built home on blacktop. Basement. 2-car garage. On one acre. \$35,900.
REMODELED COUNTRY HOME on 10 acres. Income now or could be single family. Good location one mile from Chelsea. \$64,500.

Bushnell Realty
475-7180
FREE PUPPIES — Ph. 475-8780 after 3:30 p.m. x15

Spear & Assoc., Inc.
REALTORS
122 W. Main St., Manchester
Office Phone 428-8046 x15
BARN & YARD SALE — Clothes, hi-fi, radios, furniture, antiques, drapes, old magazines and books, toys, honey, many more items. Come on out 2 miles from Chelsea, 18850 McKinley Rd. Farm on left. Sept. 24, 2 p.m. to 8 p.m., Sept. 25, 9 a.m. to 7 p.m.
FOR SALE — Lhasa Apso puppies. Eight weeks old. Shots and wormed. Long hair, no shedding. Purebred but no papers. \$75 each. Call (517) 536-4962. x15
HELP WANTED — Personnel for general office work with long-established firm in Ann Arbor. Benefits offered. Phone 665-8611. x15

SCHNEIDER'S GROCERY
CHOICE MEATS - FINE FOODS
FARMER PEET'S
Ring Bologna, lb. 79c
ECKRICH ALL-BEEF
Hot Dogs . . . lb. 99c
ECKRICH 12-OZ LINK BREAKFAST
Sausage . . . lb. \$1.19
ALL-BEEF
Hamburger . . . 3 lbs. \$1.99
1-LB. PKG. ECKRICH ROLLED
Pork Sausage . . . lb. \$1.09
121 S. MAIN ST.
PHONE 475-7600
Your Store for
Alexander & Hornung's
Smoked Meats
We Accept
U.S.D.A.
Food Coupons

WANT ADS

FOR SALE — Antique arm chair, \$35. Double kitchen sink, avocado enamel, with baskets. New. Carped, \$28.00. Grass Lake schools. Ph. (313) 475-4434. x241f
FORD '74 Ranchero pick-up. Auto., power, low miles. Excellent one-owner condition. Palmer Ford, 475-1301. x14

Chelsea Greenhouses
7010 Lingane Road
Chelsea, Mich.
Phone 475-1353 or 475-1354
FLOWERS AND PLANTS for every occasion. We specialize in wedding flowers to fit your budget. We are as near as your phone and we welcome your business.
Charter Member of FTDA
Teleflora Wire Services x421f

FOR SALE — 8' hydroplane with Mercury Mark IV short shaft, 7 1/2 h.p. outboard motor. Phone 662-6610. x101f
THE STOCKBRIDGE SQUARES are again offering modern square dance lessons at the Lyndon Town Hall from 7 p.m. to 9:30 p.m. Sunday evenings, beginning Sept. 18. For more information call 475-7058. x15

REAL ESTATE
HANDSOME BRICK farmhouse on 40 acres in Manchester. 4 bedrooms, 2 baths, dining room, 2 fireplaces, full basement and 1-car garage. Small pond and some out-buildings. Reduced to \$79,900.
COUNTRY ROADS take you to this lovely 3-bedroom ranch in excellent condition on 1 acre. Manchester schools. Only \$34,500.
PEACEFUL larger home in Manchester. This consists of three 1-bedroom apartments. Great money maker on 66'x132' lot.
DO SOMETHING DIFFERENT and invest your time and money in a new kind of business. For \$69,000, is this 7-bedroom care center in excellent condition. Dining room, 2 baths, basement, fireplace and more on 1 acre. Or if you've got an extra large family this home has plenty of room for the whole gang. Columbia schools.
OLDER 3-BEDROOM home on almost 4 acres for only \$28,500. Manchester schools. Nice location close to town.
NAPOLEON SCHOOLS — 3-bedroom brick ranch on 1 acre for \$36,000. 1 1/2 baths, dining room, 1-car garage and a black-top drive.
32-ACRE FARM for \$49,500 near Wampler's Lake in the Brooklyn school area. 3-bedroom home with 1 bath, dining room, and full basement. 56'x34' barn and kitchen coop.

OFFICE: 428-8046
Eyes and week-ends:
James Mann 428-8074
Ellis Pratt 428-8562

Estate of Mina Seitz
Braun & Helmer
Auction Services
LLOYD R. BRAUN
Ann Arbor, 665-9646
JERRY L. HELMER
Plymouth, 453-4109
Inspection day of sale.
Terms: Cash or Check.
Nothing removed until settled for.
Not responsible for accidents.
Lunch on grounds. x15
FOR RENT — 1-bedroom apartment in Dexter. \$185. Utilities not included. Call 426-8292 during business hours. x12
1969 CHEVROLET IMPALA—Four door, fully equipped, good tires. Best offer. Call 475-1467. x1

FOR SALE — 1975 Ford pickup F-250, p.s., p.b., air. A real clean truck. Call 475-9265. x41
PIANO TUNING, Chelsea and area. Facilities for reconditioning and rebuilding. Used piano sales; reconditioned grands and verticals. E. Ecklund, 426-4429. x504
KLINK EXCAVATING
Buildozer — Backhoe
Road Work — Basements
Trucking — Crane Work
Top Soil — Demolition
Drainfield — Septic Tank
Trenching, 5" up
Industrial, Residential, Commercial
CALL 475-7631 x131f
STEP UP TO KOZMA CONSTRUCTION
And Step Down In Price
LICENSED BUILDER
FREE ESTIMATES
COMPLETE CONSTRUCTION SERVICES
CALL LEN KOZMA 475-7452 x291f
HELP WANTED
Acme-Gridley operators with 3 or more years' experience for day or night shift. Up to \$6.58 days, \$6.83 nights. Excellent benefits.
K & E Screw Products Co.
8763 Dexter-Chelsea Rd., Dexter
Phone 426-3941 x15
WANTED HAY — First and second-cutting hay. Must be well baled. Charles Trinkle, call 475-7798, evenings. x151f
Your Opinion of Us is our most valued asset.
Staffan Funeral Home
"Funeral Directors for Four Generations"
124 PARK STREET PHONE GR 5-1444
YES
WE ARE MAKING
LONG-TERM FARM
REAL ESTATE
LOANS
SEE US
Federal LAND BANK Association
P. O. Box 7006
Ph. 769 2411 3645 Jackson Rd.
Ann Arbor, Mich. 48103
FRISINGER REALTORS
Chelsea 475-8681
Eves:
Herman Koenn 475-2843
Bob Koch 426-4734
Paul Frisinger 475-2821
George Frisinger 475-2803 x141f
WANTED FROM OWNER — Farm property for cash or terms. Call (313) 399-0262, between 8 a.m. and 5 p.m. x15
MUST SELL — 1973 Monterey mobile home, 2 bedrooms, washer and dryer, stove, refrigerator, drapes, cement steps. 10'x7' metal shed included. Call (517) 546-7439 after 7 p.m. Assume mortgage of \$8,500 with negotiable down payment. x16
Automotive Rust Proofing Cars and Trucks
Village Motor Sales, Inc.
CHRYSLER - DODGE PLYMOUTH - DODGE TRUCKS
Phone 475-8691
1185 Manchester Rd., Chelsea
Hours: 8 a.m. to 5:30 p.m.
Tues. thru Fri. Until 9 Monday, 9 a.m. to 1 p.m. Saturday x141f
Annual Chelsea FIREMEN'S BALL
Saturday, Oct. 2
at Fair Service Center
9:30 p.m. to 1:30 a.m.
Dancing to music by THE RESEARCHERS
\$8.00 per couple
Tickets from any Chelsea Fireman or Kusterer's Food Market x16
Demonstrators
'76 ASPEN SE station wagon, 318, auto., p.s., p.b., air cond., stereo, speed control... SAVE!
Used Trucks
'75 DODGE D-200, 318, 3-speed, p.b., 18,100 miles... \$3995
'75 RAMCHARGER, 2-wheel drive, 360, auto., p.s., p.b., air cond., roll bar, white wheels... \$5195
'74 DODGE CB-300 Kary van, 318, 3-speed, p.b. \$3295
'74 DODGE TRAVCO surfer van, 318, auto., p.s., p.b., carpeted... \$4295
'74 DODGE D-100, 318, auto., p.s., p.b., dual tanks... \$2995
'74 DODGE D-200 Club Cab, 318, auto., p.b., air cond., AM-FM, aux. tank, cover, 31,000 miles... \$3995
'73 CHEVY 1/4-ton, 4-wheel drive, 350, auto., p.s., p.b. \$2995
'71 CHEVY C-50, cab and chassis, 350, 4-speed, 8.25x20 — 10 tires... \$2195
Quality Used Cars
'74 DODGE Coronet 4-dr., 225, auto., AM radio, radial tires, 13,500 miles... \$2995
'74 PLYMOUTH Fury I 4-dr., V-8, auto., p.s., p.b., air... \$1195
'73 CHRYSLER New Yorker Brougham, 2-dr. hardtop, V-8, auto., p.s., p.b. power locks, air cond., radials... \$2395
'73 DODGE Royal Sportsman, 360, auto., p.s., p.b., air cond., AM-FM, aux. heater, speed control... \$3995
'72 DUSTER coupe, 6-cyl., auto., one owner... \$1195
'72 PLYMOUTH Fury III 2-dr. hardtop, 360, auto., p.s., p.b., air cond. \$1495
'72 CHEVY Nova 2-dr., 6-cyl., 3-speed... \$1795
'70 VALIANT 4-dr., 6-cyl., auto., p.s. \$595
'69 CHEVY 4-dr., V-8, 3-speed, low mileage... \$295
'68 OLDS 4-dr., V-8, auto., p.s., p.b., air cond., Michelin tires... \$495
BUSHNELL
LAKEFRONT COTTAGE on over half acre. A beautiful setting in Irish Hills area. Furnished. In nice condition. \$17,500.
NEW 3-BEDROOM pre-built home on blacktop. Basement. 2-car garage. On one acre. \$35,900.
REMODELED COUNTRY HOME on 10 acres. Income now or could be single family. Good location one mile from Chelsea. \$64,500.
Bushnell Realty
475-7180
FREE PUPPIES — Ph. 475-8780 after 3:30 p.m. x15
Spear & Assoc., Inc.
REALTORS
122 W. Main St., Manchester
Office Phone 428-8046 x15
BARN & YARD SALE — Clothes, hi-fi, radios, furniture, antiques, drapes, old magazines and books, toys, honey, many more items. Come on out 2 miles from Chelsea, 18850 McKinley Rd. Farm on left. Sept. 24, 2 p.m. to 8 p.m., Sept. 25, 9 a.m. to 7 p.m.
FOR SALE — Lhasa Apso puppies. Eight weeks old. Shots and wormed. Long hair, no shedding. Purebred but no papers. \$75 each. Call (517) 536-4962. x15
HELP WANTED — Personnel for general office work with long-established firm in Ann Arbor. Benefits offered. Phone 665-8611. x15
SCHNEIDER'S GROCERY
CHOICE MEATS - FINE FOODS
FARMER PEET'S
Ring Bologna, lb. 79c
ECKRICH ALL-BEEF
Hot Dogs . . . lb. 99c
ECKRICH 12-OZ LINK BREAKFAST
Sausage . . . lb. \$1.19
ALL-BEEF
Hamburger . . . 3 lbs. \$1.99
1-LB. PKG. ECKRICH ROLLED
Pork Sausage . . . lb. \$1.09
121 S. MAIN ST.
PHONE 475-7600
Your Store for
Alexander & Hornung's
Smoked Meats
We Accept
U.S.D.A.
Food Coupons

LITTLE WANT ADS! BIG PLUSES FOR BIG RESULTS!

JUST PHONE
475-1371

WANT ADS

YOUNG

We list and sell lake, country and town properties. Eugene Young, Real Estate & Builder, 875-3792, 11506 Dexter-Pinckney Rd., Pinckney 48169. x341f

CAR & TRUCK LEASING. For details see Lyle Christwell at Palmer Motor Sales, 475-1301. 491f

R. L. BAUER Builders

LICENSED and INSURED Custom Building

Houses - Garages
Pole Barns
Roofing - Siding
Concrete Work

FREE ESTIMATES

Call 475-1218

NEED A ROOF? Call Toth Building & Remodeling, (313) 498-2178. 411f

BABYSITTER WANTED for occasional evenings and week-ends. Call 475-9258, after 5:30 p.m. 14

SEE US for transit mixed concrete. Klump Bros. Gravel Co., Phone Chelsea 475-2530, 4220 Love Rd., Grass Lake, Mich. x401f

ROOMS by day, week or month. Excellent for the single man or retiree. Sylvan Hotel, Chelsea. Ph. 75-2911. x311f

KETO USED CARS

6020 GRAND - DEXTER

426-4535

CARS BOUGHT AND SOLD

x381f

A fine selection of

New and Used Cars

for immediate delivery

Harper Pontiac Sales & Service

475-1304

Evenings, 475-1608

401f

CARPENTER WORK - Inside or out. Mr. Coburn, 475-2893. 121f

GAR - NETT'S Flower & Gift Shop

Your Friendly Florist

112 E. Middle St., Chelsea

PHONE 475-1400

Funeral Flowers
Wedding Flowers

Cut Flowers (arranged or boxed)
Potted Flowering Plants
Green Plants - Corsages

WE DELIVER

x01f

CUSTOM SEWING and alterations. Ph. after 2:30 p.m., 475-8745. 301f

ROOFING SPECIALIST - All types of roof repairs, homes, barns, commercial. Insurance repairs. Asphalt shingles, hot built-up roofing, cedar-slate tile-asbestos. Awnings and porch enclosures. Call Joe Hayes for free estimates. Manchester, 428-8520. x221f

BUILDING LOT - 5 acres. \$14,000. Terms. Ph. 475-1743. 451f

WANT ADS

WEDDING STATIONERY - Prospective brides are invited to see our complete line of invitations and wedding accessories. The Chelsea Standard, 300 N. Main. Ph. 475-1371. 81f

McCulloch Portable Generators Chain Saws

WE SELL, SERVICE, SHARPEN AND TRADE.

Chelsea Hardware

FOR REAL DOLLAR SAVINGS be sure and see us before you buy any new or used car. Palmer Motor Sales, Inc. Your Ford Dealer for over 60 years. 31f

DON'T THROW IT AWAY - Sell it to A&K Mower Service of Chelsea. We buy, sell and repair all types of lawn mowers. We also repair all types of small gas motors; rototillers, chain saws, riding lawn mowers. You call, we haul. Free pick up and delivery. 475-2923. x401f

EVANS JANITORIAL SERVICE has part-time positions available for the Chelsea area. Call 971-6263 after 6 p.m. 31f

Old Orchard Furniture Refinishing

ANTIQUES RESTORED

Old finish removed from wood or metal safely and economically.

513 Old Orchard
Stockbridge, Michigan 49285
(517) 851-8713

21f

APPLICANTS NEEDED

All office skills for temporary assignments.

CALL

971-1631

Gerry Rushings Temporary Help

THE PROVEN carpet cleaner. Blue Lustre, is easy on the budget. Restores forgotten colors. Rent electric shampooer, \$1. Chelsea Hardware. 15

EDWARDS CONSTRUCTION. Vinyl and aluminum siding, roofing, blown insulation, remodeling, building. Weston homes. Call Joe, 426-4057. x25

15 MINUTES from Chelsea, 5-bed room farm house on 3 acres. Includes family room, dining room, basement, garage and barn. 15

NEVER 4-BEDROOM home completely isolated by thick woods, but only 1 mile from Chelsea. Family room with fireplace, 1 1/2 baths, rec. room, 2-car garage, deck and first floor laundry. \$81,900.

IDEAL FAMILY HOME - 4-bedroom colonial, easy walking distance to elementary. Dining room, family room, fireplace, basement, and 2-car garage. \$57,500.

BASEMENTS - BULLDOZING
SEPTIC TANKS - DRAIN FIELDS
BACK HOE - TRUCKING

26 YEARS IN BUSINESS
IN CHELSEA AREA

Call "Bob" - 475-2010

x29

FITZSIMMONS EXCAVATING

Sand - Gravel
BLACK DIRT

BASEMENTS - BULLDOZING

SEPTIC TANKS - DRAIN FIELDS

BACK HOE - TRUCKING

26 YEARS IN BUSINESS

IN CHELSEA AREA

Call "Bob" - 475-2010

x29

WANT ADS

REDUCE excess fluids with Fluidex tablets, only \$1.89. Chelsea Pharmacy. 17

NORTH LAKE - 3-bedroom ranch with walk-out basement, two baths, separate dining room, glassed porch, and private 12'x35' deck. Many extras. High \$40's. Call 475-2832, after 6. x16

WANTED - Hauling jobs, junk, wood, almost anything. Call 475-8884. 301f

TRAVEL TRAILERS - 13-ft. and up; 10x55 ft. trailers. John R. Jones Trailer Sales, Gregory, Mich. Phone 498-2855. 431f

WANTED TO BUY or rent, secluded country house, stone or brick, 4 bedrooms, 2 baths, 10 acres or more. Out-building, trees, within 30 minutes of Ann Arbor. Reply post office box 1748, Ann Arbor 48103 or after 6 p.m., 475-9444. x15

WANTED - Will baby-sit mornings and second shift in my home. Dexter. 426-4494. x15

FOR SALE - Go-kart, almost new, \$175. Call 475-1168. x15

1975 BUICK Electra 225 4-dr. hardtop, air cond., 16,000 miles. \$5995

1974 BUICK Estate Wagon, 2-seater, air cond., 30,000 miles. \$3495

1973 FORD LTD 4-dr. hardtop, air cond. \$2495

1973 CHRYSLER Newport 4-dr. sedan, air cond. \$2295

1972 OPEL Sport Coupe 2-dr. hardtop, automatic. \$1495

1972 CHEVROLET Biscayne, 4-dr. sedan. \$695

1971 BUICK LeSabre Custom 4-dr. hardtop, air cond. \$1295

Mon.-Tues.-Wed.-Fri., 8:00-5:30
Thurs., 8:00-9:00
Closed Saturdays

SPRAGUE Buick-Olds-Opel, Inc.

1500 S. Main St., Chelsea
Ph. 475-8964

151f

Pierson & Riemenschneider

111 Park St. - 475-9101

WATERLOO RECREATION AREA - Charming remodeled 3-bedroom home on 2 wooded acres. Room for a study, plenty of storage, appliances, outbuildings. \$34,000.

VERY WELL KEPT 3-bedroom home in the village. Large back yard, plastered walls, coved ceilings, hardwood floors, and full basement. \$38,000.

NEAT & COZY 4-bedroom bungalow, rec. room, screened breezeway, 2-car attached garage. Land contract possible. \$42,500.

CONVENIENT to most everything. Good neighborhood, 4-bedroom 1 1/2-bath home, 2 baths, study. \$48,000.

15 MINUTES from Chelsea, 5-bed room farm house on 3 acres. Includes family room, dining room, basement, garage and barn.

NEVER 4-BEDROOM home completely isolated by thick woods, but only 1 mile from Chelsea. Family room with fireplace, 1 1/2 baths, rec. room, 2-car garage, deck and first floor laundry. \$81,900.

IDEAL FAMILY HOME - 4-bedroom colonial, easy walking distance to elementary. Dining room, family room, fireplace, basement, and 2-car garage. \$57,500.

Pierson & Riemenschneider REALTORS - 475-9101

111 Park St., Chelsea

Eves, call:

Pat Merkel 475-1324
Jeanene Riemenschneider 475-1469

Jim Spencer 475-2767
John Pierson 475-2064
Bob Riemenschneider 475-1469

15

Quality Evergreens

Spreading and Hicks yews, Arbor Vitae, Pfitzers, also Royal Red and Norway Maples. All state inspected. Free estimates. You dig.

Faist's Evergreen Nursery

11362 Trist Rd., Grass Lake, Mich.
Ph. 517-522-4588

FREE PUPPIES - Mixed cockapoo-beagle. Ph. 475-1556. 15

FOR SALE - 1983 Chev. pick-up, runs good. Moto Ski snowmobile, Rupp mini-bike, mimeograph machine. 475-8130 after 6 p.m. 15

MOVING - Garage sale, Sept. 25, Saturday noon to 5 p.m. at 15809 Waterloo Rd. Household items, some furniture, tools, clothing. 15

FOR RENT - 1-bedroom apartment. No pets. Ph. 475-1513. x151f

PORTER'S TV SALES and SERVICE

QUASAR DEALER

Service on all TV makes and models.

Antenna Sales & Installation

CALL 475-8380

WANT ADS

SEAMLESS ALUMINUM eaves-troughs, roofing, siding, and carpentry work of all kinds. Experienced installers. All work guaranteed. For free estimate, call R. D. Kleinschmidt Co., 426-8836. x311f

WANTED - Hauling jobs, junk, wood, almost anything. Call 475-8884. 301f

TRAVEL TRAILERS - 13-ft. and up; 10x55 ft. trailers. John R. Jones Trailer Sales, Gregory, Mich. Phone 498-2855. 431f

WANTED TO BUY or rent, secluded country house, stone or brick, 4 bedrooms, 2 baths, 10 acres or more. Out-building, trees, within 30 minutes of Ann Arbor. Reply post office box 1748, Ann Arbor 48103 or after 6 p.m., 475-9444. x15

WANTED - Will baby-sit mornings and second shift in my home. Dexter. 426-4494. x15

FOR SALE - Go-kart, almost new, \$175. Call 475-1168. x15

1975 BUICK Electra 225 4-dr. hardtop, air cond., 16,000 miles. \$5995

1974 BUICK Estate Wagon, 2-seater, air cond., 30,000 miles. \$3495

1973 FORD LTD 4-dr. hardtop, air cond. \$2495

1973 CHRYSLER Newport 4-dr. sedan, air cond. \$2295

1972 OPEL Sport Coupe 2-dr. hardtop, automatic. \$1495

1972 CHEVROLET Biscayne, 4-dr. sedan. \$695

1971 BUICK LeSabre Custom 4-dr. hardtop, air cond. \$1295

Mon.-Tues.-Wed.-Fri., 8:00-5:30
Thurs., 8:00-9:00
Closed Saturdays

SPRAGUE Buick-Olds-Opel, Inc.

1500 S. Main St., Chelsea
Ph. 475-8964

151f

Pierson & Riemenschneider

111 Park St. - 475-9101

WATERLOO RECREATION AREA - Charming remodeled 3-bedroom home on 2 wooded acres. Room for a study, plenty of storage, appliances, outbuildings. \$34,000.

VERY WELL KEPT 3-bedroom home in the village. Large back yard, plastered walls, coved ceilings, hardwood floors, and full basement. \$38,000.

NEAT & COZY 4-bedroom bungalow, rec. room, screened breezeway, 2-car attached garage. Land contract possible. \$42,500.

CONVENIENT to most everything. Good neighborhood, 4-bedroom 1 1/2-bath home, 2 baths, study. \$48,000.

15 MINUTES from Chelsea, 5-bed room farm house on 3 acres. Includes family room, dining room, basement, garage and barn.

NEVER 4-BEDROOM home completely isolated by thick woods, but only 1 mile from Chelsea. Family room with fireplace, 1 1/2 baths, rec. room, 2-car garage, deck and first floor laundry. \$81,900.

IDEAL FAMILY HOME - 4-bedroom colonial, easy walking distance to elementary. Dining room, family room, fireplace, basement, and 2-car garage. \$57,500.

Pierson & Riemenschneider REALTORS - 475-9101

111 Park St., Chelsea

Eves, call:

Pat Merkel 475-1324
Jeanene Riemenschneider 475-1469

Jim Spencer 475-2767
John Pierson 475-2064
Bob Riemenschneider 475-1469

15

Quality Evergreens

Spreading and Hicks yews, Arbor Vitae, Pfitzers, also Royal Red and Norway Maples. All state inspected. Free estimates. You dig.

Faist's Evergreen Nursery

11362 Trist Rd., Grass Lake, Mich.
Ph. 517-522-4588

FREE PUPPIES - Mixed cockapoo-beagle. Ph. 475-1556. 15

FOR SALE - 1983 Chev. pick-up, runs good. Moto Ski snowmobile, Rupp mini-bike, mimeograph machine. 475-8130 after 6 p.m. 15

MOVING - Garage sale, Sept. 25, Saturday noon to 5 p.m. at 15809 Waterloo Rd. Household items, some furniture, tools, clothing. 15

FOR RENT - 1-bedroom apartment. No pets. Ph. 475-1513. x151f

PORTER'S TV SALES and SERVICE

QUASAR DEALER

Service on all TV makes and models.

Antenna Sales & Installation

CALL 475-8380

FARLEY CONSTRUCTION

522 HOWARD RD.
ADDITIONS - REMODELING
REPAIRS
NEW HOMES
475-8265 or 475-7643

WANT ADS

BEEF - Locally corn fed. By quarter or side. Ready for your freezer. Ph. 426-4022 after 6 p.m. x421f

HELP WANTED - Babysitter in our home, Mon. thru Fri., 7:30 a.m. to 3:45 p.m. Ph. 426-4847 after 5 p.m. x15

HELP WANTED - RN or LPN, full-time and part-time positions available. Skilled nursing care facility. Call collect 517-851-7700 between 9 a.m. and 5 p.m. x121f

Real Estate One, Inc.

1300 S. Main St.
Ann Arbor, Mich. 48103
Phone 985-1616

We Make Things Simpler For You

COUNTRY COMFORT - 4-month-old ranch, 3 bedrooms, 2 full baths, full basement on 11.5 acres of rolling farmland - plenty of room for kids and animals. Owner transferred! Minutes from Manchester.

SUPER INVESTMENT! Site of old lumber mill. This parcel is being sold at below market value. Approximately 4 acres are covered with cut lumber. A total of 20 acres with stream, pond, and rolling terrain making this a hunter's paradise. A steal for someone with energy and imagination. Located in Manchester area. \$26,000. Land contract available.

EARLY AMERICAN CHARM in this elegant older home located in the Village of Chelsea. New furnace, water heater, wiring and roof make this 4-bedroom home an excellent buy! Your family will enjoy this pleasant neighborhood and excellent school district.

BEAUTIFUL COUNTRY SETTING in this immaculate 3-bedroom home with a 2-car garage for plenty of parking space. Enjoy the warmth of a crackling fireplace this winter season. This lovely home is located near the Chelsea High School and requires very low maintenance.

DESIRABLE LOCATION on Portage Creek in Umadilla township. You'll love this 4-bedroom home with extra large air conditioner in the master bedroom. Creek leads to Williamsville Lake. Enjoy the convenience of your own gas pump, workshop and garage for the handyman or woman.

COOL LAKE BREEZES on clean, private Williamsville Lake. This is one of the only 10 lakefront lots available on the lake. State of Michigan owns most of the frontage, residents make restrictions. Lot size is 63'x150'. Stockbridge school district.

THE CENTURY HILLTOP HOME - 2 acres can be split. Possible apartment in walk-out basement. This beauty includes 2 fireplaces, 2 1/2 baths with 4 bedrooms and an excellent view of the Raisin River located in Village of Manchester.

100% WOODED - Large 4-bedroom contemporary home on 1 1/2 lovely acres in Waterloo Recreation Area. Central air, excellent condition with numerous pluses.

NEWLYWEDS ATTENTION - You can get a good start in this spotless 2-bedroom and 2-bath mobile home on 1/4 acre site for less than \$200 per month including all furnishings. Call 475-7322 for further details.

EVENINGS:

Al Kleis 475-7322
Evelyn White 475-7351
Steve Flint 475-1423
Joe O'Connor 994-1223

15

All Insurance Needs

In the convenience of your own home - or mine

N. H. Miles, Allstate

Call Only 475-8334

15

Chelsea Greenhouses

7010 Lingane Rd.
Phone 475-1353

LARGE, HARDY MUMS, all colors, cash and carry, \$2.99

PAINTING - Exterior, interior, commercial, residential. Homes, barns, farm buildings, aluminum roofs. Free estimates. Reasonable rates. Ph. (517) 851-7055 evenings. 15

HOME-MADE SLEEPER camper - Fits half of pickup truck. Ideal for fisherman or deer hunter. \$50. Also free kittens. Ph. 475-8510. 131f

WILL PICK UP most anything of metal - TVs, dryers, refrigerators, auto parts, etc. Call week days after 3:30, any time Saturday and Sunday, 475-1246. No charge. 15

MAUSOLEUMS * MONUMENTS
BRONZE TABLETS * MARKERS

BECKER MEMORIALS

6033 Jackson Road
ANN ARBOR, MICHIGAN

WANT ADS

FOR RENT — American Legion Hall, 550. Call 475-1824.
WANTED — Mature, live-in housekeeper for three elderly ladies in Ypsilanti. Room and board, minimum wages. Call 485-2048. x81

NO HUNTING SIGNS

Now available

Chelsea Standard

FOR SALE — 1978 Ford Ranchero. Price negotiable. Ph. 475-2402 after 5 p.m.
10 ACRES between Grayling and Kalkaska—Heavily wooded, best deer population, secluded, good trail road, close to river and State Forest. \$3,500 with \$300 down. \$50 monthly on 8% land contract. Call 616-268-4873 days or 616-258-3747 evenings. Write Wildwood Land Company, R. No. 1, Box 264, Kalkaska, Michigan 49646. x15

HUNTERS

See Us For Your

GUNS AND AMMO NEEDS

Game coats, vests, socks, hats, license, Put-44 take permits

Chelsea Hardware

110 S. Main, Ph. 475-1121. x16

WEIGHT WATCHERS — New meeting, Chelsea area, Thursday 10 a.m., Thursday 7 p.m. Methodist church. x18

WANTED TO RENT — Storage space in barn or building for 25 ft. trailer. Ph. 662-2178. x15

FOR SALE — Harley-Davidson 73 XLCH Sportster. Excellent condition. Call 488-8895. x16

FOR SALE — McIntosh apples. Four miles south of Manchester on M-52. Corner of Bowens Rd. -18

country beautiful

—Quality Materials

—Professional Workmanship

—Country-Style Beauty

"Your Lot or Ours"

We Do Everything For You From Financing To Clean-Up At Price You Expected To Pay... Appointment Anytime

Weber Homes

Over 20 Years Experience

Call 475-2828

12290 Jackson Rd., Chelsea

x15

x15

x15

x15

x15

x15

x15

x15

x15

x15

x15

x15

x15

x15

x15

x15

x15

x15

x15

x15

x15

x15

x15

x15

x15

x15

x15

x15

x15

x15

x15

x15

x15

x15

x15

x15

x15

x15

x15

x15

x15

x15

x15

x15

x15

WANT ADS

LOST — Black cat with blue collar. In vicinity of Gratiot campgrounds. Call collector (313) 446-8385. x15

WANTED TO BUY (will pick up) — Old orchard. Worms no problem. Ph. 475-2415. x15

HARVEST DAYS

FARMER'S MARKET

Sat., Sept. 25

& Sun., Sept. 26

Display and Sell Your Produce. No Charge. From Dawn 'til Dusk.

FIRST COME—FIRST SERVED. Space available basis.

Arborland Merchants Assoc. 3881 Washtenaw, Ann Arbor. x15

FOR SALE — 5,000 BTU natural gas furnace, \$75. Ph. (517) 831-8613 before 2 p.m. or after 9 p.m. x15

PAPER DRIVE—Boy Scout Troop 479. Call for pickup, 475-1520, 475-1638 or 475-6130. x16

FOR RENT — 1-bedroom apartment in country, partly furnished. References required. No pets. Please call 475-1446. x16

WANTED TO RENT — Young couple interested in self-sufficient living near farm house with barn. Ph. 484-1403 persistently. x16

RHODE ISLANDS for sale — \$3 each or 2 for \$5. Ph. 475-2628. x16

BEAUTIFUL BRASS BED in mint condition, \$350. Ph. 475-2628. x16

1/4-ACRE BUILDING SITE, with 213 feet of frontage on N. Harrison Rd. near golf course. Have health permit and zoning permit. Ready to dig! \$8,000. Will build to suit. Call Weber Homes. 475-2628. x144

With these unusual amenities — large sun room on a nice acre with chain fence, also nice pool barn. Lovely for retreats. Priced reasonable. Land contract.

Pleasant Large All-Modern Trailer

Call 475-8406 475-2734 evenings

Also other properties.

If you have property to sell — or if you wish to buy, give us a call — maybe we can be of assistance.

GARAGE SALE at 13742 North Lake Rd. Sept. 23, 24, 25 rain or shine. Wine barrels, apalane shells, toys and misc. x15

CLEAN, soft, fluffy dry carpets. That's what you get when you clean them with HOST. Rent the HOST-Machine. Market Home Furnishings, Chelsea, 475-8021. x15

SLEEPING ROOM — Furnished. Linens supplied, \$75 per month. Ph. 475-9530. x15

FOR RENT in Dexter — Unfurnished 4-room apartment. Stove, refrigerator and heat furnished. No pets. Call 475-1639 after 6 p.m. x15

QUALITY BUILT

Brick tri-level, with an extra kitchen for entertaining, spacious rooms, nicely decorated, well maintained. A home the entire family will enjoy. Priced to sell. Call Al Kleis at 475-7322 for appointment.

Real Estate One REALTORS

1300 S. Main, Ann Arbor Office, 995-1616 Res., 475-7322

AL KLEIS 475-7322

Over 20 Years Experience

Call 475-2828

12290 Jackson Rd., Chelsea

x15

x15

x15

x15

x15

x15

x15

x15

x15

x15

x15

x15

x15

x15

x15

x15

x15

x15

x15

x15

x15

x15

x15

x15

x15

x15

x15

x15

x15

x15

x15

x15

x15

x15

x15

x15

x15

x15

x15

x15

x15

x15

x15

x15

x15

x15

x15

x15

x15

x15

x15

WANT ADS

YARD SALE — 5300 Clear Lake Rd. Sept. 24-25. Round dining room table and four chairs, coffee table, reclining chair, Danish furniture, single bed, handbag, dresser and trunk, men's and ladies' clothes, baby clothes and items and misc. items. Everything like new. Ph. 475-9530. x15

FOR SALE — 1988 Triumph, good condition. Ph. (517) 596-2379. x18

HOME FOR SALE 235 Harrison

GRACIOUS, turn-of-the-century living can be yours with this 2-story frame home right in Chelsea. 3-car garage and large fieldstone front porch are just some of this home's many fine features. See for yourself at our OPEN HOUSE this Sunday, Sept. 28, from 1-4 p.m., or call A. P. W. Hewitt, Inc., Realtor, 688-7002. Evenings, 683-8128. x15

FOR SALE — 1973 Plymouth, good condition. 121 Van Buren. Ph. 475-9242. x15

FOR SALE — 1984 Chevy van, \$100 as is. Ph. 475-1712. x15

GARAGE SALE — Single beds, TV and other items. 128 Lincoln St. Saturday, Sept. 25, 9 a.m. x15

Imported Holland Grown Bulbs For Fall Planting

TULIPS — DAFODIL

HYACINTH — CROCUS

Chelsea Hardware

110 S. Main Ph. 475-1121

x15

x15

x15

x15

x15

x15

x15

x15

x15

x15

x15

x15

x15

x15

x15

x15

x15

x15

x15

x15

x15

x15

x15

x15

x15

x15

x15

x15

x15

x15

x15

x15

x15

x15

x15

x15

x15

x15

x15

x15

x15

x15

x15

x15

x15

x15

x15

x15

x15

x15

x15

x15

x15

x15

x15

x15

x15

x15

x15

x15

x15

x15

x15

x15

x15

x15

x15

x15

x15

x15

x15

x15

x15

WANT ADS

FOR RENT — 2-bedroom house in country, \$170 per month. Call 605-9007. x15

PERSON WANTED to do ironing every two weeks. Call 475-9530. x15

LOVELY PROVINCIAL 10-acre two miles from 1-94. Chelsea schools. \$14,900. Call 475-9530. x18

Time Is Shortening for Exterior House Painting

Along with colors, we stock latex regular house paint and sash and trim. Also, regular house paint, super white and sash and trim in white oil paint.

USE DUTCH BOY there's none better.

MERKEL Home Furnishings

Ph. Chelsea 475-8621

MATURE, RELIABLE CHILD CARE needed in Half Moon-Blind Lake area. Must have own transportation and references. Call 475-9599. x18

YARD SALE — Sept. 23, 24, 25 from 10 a.m. till 4 p.m. AM-FM, 4-track stereo console, CB's and some furniture, toys, etc. 123 North St., Chelsea. x15

FOR SALE — 10-ft. aluminum jon boat, Sea Nymph, \$100. Ph. 475-2388. x15

ELEMENT SALE — Sept. 24-25. Childproof crib, stroller, high chair, converts to numerous items, clothing, walker and more. 389 Wilkinson, Chelsea. x15

GARAGE SALE — 405 W. Middle, Chelsea, Friday and Saturday, 10 a.m. to 6 p.m. Furniture. x15

MOTORCYCLE FOR SALE — 1976 Triumph Bonneville 750, excellent condition, like new, \$1,995. Ph. 475-2515. x16

WANTED — Home to rent. Married working couple with references. (1) 449-4957. x15

Cards of Thanks

WE wish to express our heartfelt thanks and gratitude to all our relatives, neighbors, friends, members of Farmer's Guild, and members of Sylvan Township Association, for the many acts of kindness, for food, floral offerings, cards, calls, expressions of sympathy and offers of help, extended to us at the time of our bereavement. We also wish to thank the doctors and staff of the Chelsea Community Hospital, the Home-Vinson Ambulance Service, the Chelsea Book donors, donors of memorial wreaths, St. John's Women's Fellowship for the lunch, the pallbearers, and Rev. King for his comforting words. A special thanks to the Burghardt Funeral Home. To all who helped in any way we are deeply grateful. The family of Oscar F. Widmayer.

CONGRATULATIONS To Donald Bauer, a very special husband and father. We wish you a Very Happy Birthday. With love and appreciation. Your wife Lella, Children Jean, Ron and Donnie.

THANK YOU Thank you very much for the cards and calls by my friends and relatives during my stay at the Chelsea Medical Center. All were greatly appreciated. Sarah Benter.

CARD OF THANKS I would like to thank all my family, relatives and friends for their visits, prayers, gifts and flowers during my stay in the hospital. I would like to say a special thanks to Father Dupuis and Father Balser for their many visits, my bridge club and to the bowling league (especially to those who made a surprise visit). I would also like to give a special thanks to friends that did so many things for my family. And also to Robert and Diane Bentley for the thoughtful gift for my bedroom. Thank you most sincerely, Mildred Eeles.

Legal Notices

NOTICE OF SALE. Default having been made in the conditions of a certain mortgage made by and for the use of the undersigned, to FARMER'S MORTGAGE CORPORATION, a Michigan corporation, dated May 9, 1972, and recorded on page 9, in Liber 1389 of Washtenaw County Records, Michigan, and assigned by said mortgagee to FARMER'S MORTGAGE CORPORATION, a Michigan corporation, dated May 9, 1972, and recorded on page 9, in Liber 1389 of Washtenaw County Records, Michigan, and assigned by said mortgagee to FARMER'S MORTGAGE CORPORATION, a Michigan corporation, dated May 9, 1972, and recorded on page 9, in Liber 1389 of Washtenaw County Records, Michigan

BOWLING NEWS

Women's Bowling Club

Standings as of Sept. 15

W	L
Mark IV Lounge	0
Norris Electric	1
Jiffy Mixes	2
Chelsea Milling	2
Laura's Beauty Salon	2
Parish Chelsea Cleaners	2
Team No. 11	3
Washtenaw Engineering	4
Chelsea Grinding	4
Amway	4
Klink Excavating	4
Palmer Ford	5
Lloyd Bridges Chevrolet	5
Thompson's Pizza	5
Wolverine Bar	6
Heller Electric	6
Gambles	7

500 series: P. Poertner, 512; P. Fitzsimmons, 510.

450 series: I. Fouty, 498; D. Judson, 488; B. Larson, 487; R. Hummel, 486; J. Hafner, 485; J. Buku, 479; N. Kern, 477; J. Schleede, 477; J. Fitzsimmons, 477; D. Fouty, 468; J. Mock, 462; A. Grau, 455; A. Sindlinger, 453; B. Diefenbaugh, 451.

150 games and over: P. Poertner, 169, 172, 171; P. Fitzsimmons, 197, 150, 188; I. Fouty, 166, 167, 173; D. Judson, 197, 154; B. Larson, 161, 188; R. Hummel, 164, 167, 165; J. Hafner, 186, 154; J. Buku, 164, 151, 164; N. Kern, 157, 167, 153; J. Schleede, 158, 170; J. Fitzsimmons, 150, 198; D. Fouty, 151, 155, 162; S. Klink, 155, 172; D. Alber, 170; J. Mock, 187, 167; A. Grau, 150, 163; A. Sindlinger, 161; B. Diefenbaugh, 167, 150; D. Frisbie, 177, 158; R. Lutovsky, 153; 169; G. Kuhl, 153, 153; A. Cop-McCalla, 178; S. Roberts, 471; B. Mann, 168; J. Norris, 168; D. Forthner, 168; D. Dorow, 166; R. Whitaker, 165; D. Eisenman, 164; D. Rudnicki, 162; N. Packard, 161; G. Wireman, 161; S. Ratzlaff, 159; R. Alber, 158; A. Boham, 158; B. Stahl, 158; B. Pike, 157; N. Smith, 154; L. Niles, 152; C. Scherdt, 150.

Charlie Brown Prep

Standings as of Sept. 18

W	L
Team No. 4	0
Super Pros	1
Team No. 7	2
Team No. 6	3
Alley Runners	3
Team No. 8	2
Team No. 2	1
Team No. 5	0
Girls, high games: S. Messner, 126, 134; B. Smith, 110; B. Behnke, 107.	
Boys, high games: R. Krichbaum, 135; J. Preston, 178; D. Kleis, 148; A. Fletcher, 176, 159; J. Packard, 138; B. Benjey, 140.	

Senior House League

Standings as of Sept. 20

W	L
S. J. Custom	14
Frank Grohs Chevrolet	13
Luke's Sporting Goods	12
Dexter Automatics	11
Mark VI Lounge	9
Bauer Builders	9
Schneider's Grocery	7
Seitz's Tavern	7
Washtenaw Crop Service	7
Chelsea Grinding	5
Chelsea Lumber	5
Village Motors	5
Sarns, Inc.	5
Sylvan Center	4
Walt's Barber Shop	2
Gambles	2
Deansburro	0

525 and over series: B. Ratliff, 593; J. Grannis, 561; R. Spaulding, 545, 533; E. Harook, 555; J. Collins, 538; R. Kiel, 562; M. Poertner, 538; J. McAllister, 528; P. Kelly, 557; A. Sannes, 545; W. Westphal, 551; O. Cavender, 590; A. Hansen, 555; J. Lyerla, 559; D. Weatherwax, 530; G. Beeman, 554; R. Faron, 552; W. Hartman, 550; J. Banks, 591.

210 and over games: B. Ratliff, 210; P. Hutchinson, 215; J. Grannis, 213; E. Harook, 224; R. Kiel, 210; W. Westphal, 218; O. Cavender, 218; J. Lyerla, 212; G. Beeman, 221; R. Faron, 226; J. Banks, 212.

Leisure Time League

Standings as of Sept. 16

W	L
Roadrunners	6
Four Stooges	6
Day Dreamers	6
Unpredictables	5
The Lakers	5
Holy Rollers	4
Crackpots	4
Misfits	3 1/2
Sugar Loafers	2 1/2
Afternoon Delights	2
Lady Bugs	1

500 series: S. Bowen, 504.

400 series: D. Messing, 434; P. Weigang, 446; C. Hoffman, 414; B. Tison, 429; J. Delagrange, 403; C. Engler, 445; D. Dault, 474; A. VanderVoort, 417; J. Pagliarini, 417; S. Friday, 457; G. Wheaton, 485; S. Weston, 425; J. Stapish, 418; E. Heller, 418; B. Robinson, 400.

Games 140 and over: D. Messing, 184; S. Centilli, 160; P. Weigang, 141, 168; C. Hoffman, 179; B. Tison, 187; J. Mull, 144; S. Bowen, 147, 180, 177; J. Delagrange, 154; C. Engler, 170, 159; M. Smith, 158; M. Herrin, 143; L. Haller, 163; D. Dault, 194, 143; A. VanderVoort, 142, 149; J. Pagliarini, 145; S. Friday, 167, 143; 147; G. Wheaton, 171, 153, 162; E. Swanson, 156; S. Weston, 168; J. Stapish, 169; E. Heller, 158, 148; B. Robinson, 169.

Sunday Swingers

Standings as of Sept. 15

W	L
Pinbusters	14
Strangers	12
Heavy Rollers	10
All Season Comfort	10
So What's	10
A & C	9
Beaver Patrol	9
Brannan CB Sales	9
Irratics	7
Big Shots	7
Schulz Gang	7
4 By 4's	9
Gerry Rushing Services	4
S & W	10
2 plus 2's	10
D & U	11
Bottoms Up	12
Sourkrauts	14

Men, over 175: C. Underhill, 179; T. Kern, 172, 179; D. Curnper, 188; W. Brown, 190, 194; E. Vasas, 192, 201.

Men, over 500: D. Cumper, 504; W. Brown, 550; E. Vasas, 563.

Women, over 150: J. Helmsoldt, 157; S. Centilli, 185; M. Degener, 155; C. Engler, 152; J. Anderson, 174; S. Arnold, 168, 168, 168; J. Link, 187; D. Cozzens, 180; E. Schulz, 167; P. Sober, 162; G. Wheaton, 168, 169; S. Brown, 163; M. Vasas, 168, 170, 199; C. Brightwell, 165; S. Bauers, 154, 170, 155.

Women, over 450: S. Arnold, 502; G. Wheaton, 467; M. Vasas, 537; S. Bauers, 479.

Chelsea Suburban

Standings as of Sept. 15

W	L
Chelsea Drug	17
Chelsea Assoc. Builders	15
State Farm	14
Waterloo Garage	13
Dairy Queen	12
Dana Dee-Lites	11
Dancers	10
Mark IV Lounge	10
Chelsea State Bank	10
Ricardo's	10
Frisinger Realty	10
Fletcher Mobil	10

450 series and over: N. Collins, 553; N. Packard, 527; V. Stewart, 493; E. Neibauer, 477; F. Cole, 475; S. Bowen, 473; N. Prater, 473; A. Fahrner, 471; J. Burnett, 470; B. Robeson, 467; D. Keezer, 463; D. McAllister, 468; P. Harook, 465; E. Miller, 464; T. Monroe, 458; A. Hocking, 455; L. Beeman, 451.

Games of 160 and over: E. Schulz, 211; A. Fahrner, 183; N. Collins, 198, 195, 182; E. Miller, 181; N. Prater, 190, 178; V. Har-

vey, 189, 176; S. Moore, 163; J. Burnett, 168; V. Stewart, 189; P. D. Hawley, 173; D. Keezer, 185; F. Cole, 183; N. Packard, 198, 176; W. Hafner, 171; D. McAllister, 181; E. Neibauer, 169.

Junior Swingers

Standings as of Sept. 18

W	L
Boone's Farm Five	8
Team No. 6	8
Cool Company	8
The Bowling Wizards	8
The Wild Bunch	8
Wileisrowmly	6
S.W.A.T.	6
Crazy Five	5
The Rookies	5
The Unbeatables	4
Team No. 12	1
Girls, high games: M. Northrop, 157; C. Collins, 188; D. Bucholz, 152.	
Boys, high games: D. Stock, 184; J. Dils, 184; C. Sannes, 180, 718; J. Sweet, 174; M. Schnaidt, 188; R. Sabo, 172; J. Alexander, 164, 161; G. Packard, 165.	

Nite Owl League

Standings as of Sept. 21

W	L
Hanco Sports Center	14
Steel's Heating & Cooling	12
Wahl's Oil	12
VFW	11
Norm's Body Shop	9
Captains Table	9
K. of C.	7
Al's TV	7
Ypsi Farm Bureau	7
Team No. 18	6
Nu-Yu Boutique	5
Chelsea Finance	5
Flaming Pit	4
Cavanaugh Lake Store	3
Ted's Standard	3
Ken's Gaisis	2
Belsier Construction	0

Over 500 series: D. Hansen, 534; J. Elliott, 503; G. Ahrens, 534; K. Platt, 506; K. McCalla, 539; G. Wohlgemuth, 518; D. Nicewicz, 501; M. Jedele, 513; J. Hughes, 567; J. Borders, 523; T. Steele, 535; C. Biggs, 546; W. Marz, 524; W. Ervin, 572; R. Stacey, 539.

Over 600 series: P. Case, 620.

Over 200 games: D. Hansen, 201; K. McCalla, 217; J. Hughes, 203; T. Steele, 204; W. Ervin, 210, 202; R. Stacey, 214; P. Case, 244, 207.

Rolling Pin League

Standings as of Sept. 21

W	L
Egg Beaters	10
Grinders	8
Kookie Kutters	7
Beaters	7
Jolly Mops	7
Poachers	7
Mixers	7
Blenders	7
Kitchen Kapers	6
Jelly Rollers	5 1/2
Sporadic Spatulas	5 1/2
Moppper Uppers	5
Pots	5
Coffee Cups	5
Sugar Bowls	4 1/2
Dish Rags	4
Spooners	4
Brooms	4

145 games and over: B. Selwa, 189; R. Musbach, 146; P. Wurster, 158; J. Edick, 149; E. Williams, 162; N. Hohn, 154, 189; S. Van Natter, 158; E. Gibb, 164; L. Volta, 171, 165; C. Shepherd, 163, 154, 160; R. Foster, 151, 145; J. Shepherd, 167, 201, 197; M. Clayton, 149; R. Bable, 146; D. Ringe, 176, 178, 158; E. Reynolds, 152; R. Dils, 145; G. Clark, 150; E. Whitaker, 155, 148, 151; G. Klink, 147; B. Roberts, 152, 189; D. Spaulding, 166, 151; P. Bord-

Unknowns League

Standings as of Sept. 15

W	L
Shady Ladies	17
Independents	15
Fascinating '5	14
The Streakers	10
The Strikers	10
Games of 140 and over: P. M. Gipson, 144, 155; B. Oesterle, 143; J. Mosier, 141; J. Sweet, 146, 153; 151; K. Clark, 152, 147; R. Bee-man, 148, 201; M. Adams, 150; Dish Rags, 154, 184; K. Greenleaf, 142, 145; D. Weiss, 202; D. Bentley, 201; C. Fleischmann, 166.	
Series of 425 and over: J. Sweet, 450; R. Beeman, 470; S. Steele, 455; D. Weiss, 436.	

Residential - Commercial REMODELING

FREE ESTIMATES

Ib V. JENSEN and SON

LICENSED BUILDER

378 Spring Lake Drive Chelsea, Mich.

PHONE 475-1820

Rec. Dept. Classes...

(Continued from page seven)

Place: High School Home Ec. Room

Fee: \$10

To register phone 475-2025.

COURSE: SPANISH CONVERSATION

Instructor: Dr. Hope Lowry

12 weeks, Tuesday & Thursday, beginning Sept. 28

Time: 7-8 p.m.

Place: High School Room 118

Fee: \$10

To register phone 475-2871.

COURSE: BRIDGE I

Instructor: Janice Glazier

8 weeks, Monday, beginning Sept. 27

Time: 1-3 p.m.

Place: Fair Service Building

Fee: \$10

To register phone 475-2188.

COURSE: BRIDGE II

Instructor: Janice Glazier

8 weeks, Thursday, beginning Sept. 30

Time: 7-8 p.m.

Place: High School Library

Fee: \$10

To register phone 475-2188.

COURSE: FURNITURE REFINISHING AND CANING

Instructor: Gloria Brigham

5 weeks furniture refinishing, Tuesday, beginning Sept. 28

5 weeks caning, Tuesday, beginning Nov. 2

Time: 1-3 p.m.

Place: Fair Service Building

To register phone 426-4892.

COURSE: CHRISTMAS CRAFTS

choice of 3 times

Instructor: Lenore Matloff

6 weeks, Monday, beginning Oct. 18

Time: 7-9 p.m.

Place: High School Agriculture Room

Fee: \$10

To register phone 475-7678

ers, 158; E. Miller, 164, 146; K. Hamel, 176, 148; M. Gross, 149, 210, 148; P. Patterson, 175; P. Harook, 174, 157; P. Smith, 145.

425 series and over: L. Volta, 476; C. Shepherd, 477; R. Foster, 438; E. Whitaker, 454; B. Roberts, 445; D. Spaulding, 451; P. Borders, 436; E. Miller, 439; K. Hamel, 452; P. Harook, 468.

500 series and over: J. Shepherd, 565; D. Ringe, 510; M. Gross, 507.

Unknowns League

Standings as of Sept. 15

W	L
Shady Ladies	17
Independents	15
Fascinating '5	14
The Streakers	10
The Strikers	10

Games of 140 and over: P. M. Gipson, 144, 155; B. Oesterle, 143; J. Mosier, 141; J. Sweet, 146, 153; 151; K. Clark, 152, 147; R. Bee-man, 148, 201; M. Adams, 150; Dish Rags, 154, 184; K. Greenleaf, 142, 145; D. Weiss, 202; D. Bentley, 201; C. Fleischmann, 166.

Series of 425 and over: J. Sweet, 450; R. Beeman, 470; S. Steele, 455; D. Weiss, 436.

NOTICE OF SPECIAL MEETING

of the

DEXTER TOWNSHIP ZONING BOARD

To Be Held

THURSDAY, SEPT. 30, 1976 - 7:30 p.m.

Dexter Township Hall, 6880 Dexter-Pinckney Road

AGENDA:

(1) Request for site plan approval from John Bouillion for a 30'x70' structure at 8510-8530 North Territorial Road.

(2) Request for a site plan approval from Norman Klave for an 80'x100' structure located at 8789 McGregor Road.

DEXTER TOWNSHIP ZONING BOARD

Thomas F. Ehman, Chairman - Ph. 426-4155

Advertise Your Auction in THE CHELSEA STANDARD

REGISTRATION NOTICE

FOR

GENERAL ELECTION

TUESDAY, NOVEMBER 2, 1976

To the Qualified Electors of the TOWNSHIP OF LYNDON

(PRECINCT NO. 1)

COUNTY OF WASHTENAW, STATE OF MICHIGAN

Notice is hereby given that in conformity with the "Michigan Election Law," I, the undersigned Clerk, will, upon any day, except Sunday and a legal holiday, the day of any regular or special election or primary election, receive for registration the name of any legal voter in said Township, City or Village not already registered who may, APPLY TO ME PERSONALLY for such registration.

Notice is hereby given that I will accept registrations at my home at 5005 South Lake off Roepke Rd., any day from 8 a.m. to 5 p.m. Call 475-2315 for appointment.

Notice is hereby given that I will be at my home Monday, Oct. 4, 1976 - Last Day

From 8 o'clock a.m. until 8 o'clock p.m.

THE 30th DAY PRECEDING SAID ELECTION

And on Saturday, October 2, 1976 - 8 a.m. to 5 p.m.

As provided by Section 498, Act No. 116, Public Acts of 1954 As Amended.

For the purpose of REVIEWING the REGISTRATION and REGISTER-ING such of the qualified electors in said TOWNSHIP, CITY or VILLAGE as SHALL PROPERLY apply therefor.

The name of no person but an ACTUAL RESIDENT of the precinct at the time of registration and entitled under the Constitution, if remaining such resident, to vote at the next election, shall be entered in the registration book.

Elector Unable To Make Personal Application, Procedure

</

Flaming Pit

dinner specials:

SUNDAY - MONDAY - TUESDAY

COUNTRY STYLE CHICKEN

Salad Bar - Potato or Vegetable

All You Can Eat!

ADULTS, \$3.15 CHILDREN under 12, \$1.75

WEDNESDAY - STEAK NIGHT

7-OZ. STEAK or SHISHKABOB - \$4.45

Salad Bar - Potato or Vegetable

FRIDAY - SATURDAY

Wide Open Selections for Your Pleasure

FISH FRY THURSDAY - All You Can Eat

ADULTS, \$3.15 CHILDREN under 12, \$1.75

Try Our Alaskan King Crab Longhorn Lounge

1750 Washtenaw, Ann Arbor 971-1500

REGISTRATION NOTICE

FOR

GENERAL ELECTION

TUESDAY, NOVEMBER 2, 1976

To the Qualified Electors of the
TOWNSHIP OF LIMA

(PRECINCT NO. 1)

COUNTY OF WASHTENAW, STATE OF MICHIGAN

Notice is hereby given that in conformity with the "Michigan Election Law," I, the undersigned Clerk, will, upon any day, except Sunday and a legal holiday, the day of any regular or special election or primary election, receive for registration the name of any legal voter in said Township not already registered who may APPLY TO ME PERSONALLY for such registration.

Notice is Hereby Given that I will be at my home:
13000 Scio Church Rd., Chelsea, Daily By Appointment

Notice is Hereby Given That I Will Be at My Office

Monday, Oct. 4, 1976 - Last Day

From 8 o'clock a.m. until 8 o'clock p.m.

THE 30th DAY PRECEDING SAID ELECTION

And on Saturday, October 2, 1976 - 8 a.m. to 5 p.m.

As provided by Section 498, Act No. 116, Public Acts of 1954

As Amended.

For the purpose of REVIEWING the REGISTRATION and REGISTER-
ING such of the qualified electors in said TOWNSHIP, CITY or
VILLAGE as SHALL PROPERLY apply therefor.

The name of no person but an ACTUAL RESIDENT of the
precinct at the time of registration, and entitled under the Consti-
tution, if remaining such resident, to vote at the next election, shall be
entered in the registration book.

Elector Unable To Make Personal Application, Procedure

SEC. 504. Any elector who is unable to make personal applica-
tion for registration because of physical disability or absence from the
Township, City or Village in which his legal residence is located, may
be registered prior to the close of registration before any election or
primary election by securing from the Clerk of the Township, City or
Village in which is located his legal residence, duplicate registration
cards and executing in duplicate the registration affidavit before a notary
public or other officer legally authorized to administer oaths and
returning such registration cards to the Clerk of the Township, City or
Village before the close of office hours on the last day of registration
prior to any election or primary election. The notary public or other officer
administering the oath shall sign his name on the line for the
signature of the registration officer and designate his title.

Unregistered Persons Not Entitled To Vote

SEC. 491. The inspectors of election at any election or primary
election in this State, or in any District, County, Township, City or
Village thereof, shall not receive the vote of any person whose name
is not registered in the registration book of the Township, Ward or
Precinct in which he offers to vote. (As provided under Act 116,
P. A. 1954.)

Transfer of Registration, Application, Time

SEC. 506. Any registered elector may upon change of residence
within the Township, City or Village cause his registration to be
transferred to his new address by sending to the Clerk a signed request,
stating his present address, the date he moved thereto, and the address
from which he was last registered, or by applying in person for a
transfer. The Clerk shall strike through the last address, ward and
precinct number and record the new address, ward and precinct
number on the original and duplicate registration cards, and shall
place the original registration card in proper precinct file. Such
transfers shall not be made after the Fifth Friday preceding any
election or primary election (unless such Fifth Friday shall fall on a
legal holiday in which event registration shall be accepted during the
next full working day).

Transfer of Registration on Election Day

SEC. 507. Any registered elector who has removed from one
election precinct of a Township, City or Village to another election
precinct of the same Township, City or Village and has not recorded
such removal with the local Clerk shall execute a transfer of registra-
tion request, listing the new residence address thereon over his signa-
ture, with the election board in the precinct in which he is registered
at the next ensuing primary or election. The inspector of election in
charge of the registration records shall compare the signature thereon
with the signature upon the applicant's registration record and, if the
signatures correspond, then the inspector shall certify such fact by
affixing his initials upon said request. The applicant for transfer, after
having signed an application to vote as provided in Section 523 of this
act, shall then be permitted to vote in such precinct for that primary
or election only. The application for transfer shall be filed with the
Township, City or Village Clerk who shall then transfer such voter's
registration in accordance with the application. When the name of any
street in a Township, City or Village has been changed, it shall be
the duty of the Township, City or Village Clerk to make the change
to show the proper name of street in the registration records, and it
shall not be necessary for the elector to change his registration with
respect thereto in order to be eligible to vote.

Leila C. Bauer, Township Clerk

+ Services in Our Churches +

OUR SAVIOR LUTHERAN CHURCH

1515 S. Main, Chelsea
The Rev. William H. Keller, Pastor
Thursday, Sept. 23—
7:30 p.m.—Choir.
Sunday, Sept. 26—
9:00 a.m.—Sunday school and
Bible classes.
10:30 a.m.—Worship service.
10:00 noon—Youth gathering.
Christian Education Festival.
Monday, Sept. 27—
Mark 8:27-35.
Tuesday, Sept. 28—
7:30 p.m.—Voters' Assembly.
Wednesday, Sept. 29—
4:00 p.m. to 6:00 p.m.—Confir-
mation.

ZION LUTHERAN CHURCH
Corner of Fletcher, Waters Rds.
The Rev. John R. Morris, Pastor
Friday, Sept. 24—
7:30 p.m.—Wackenhut-Plaus wed-
ding.
Saturday, Sept. 25—
7:30 a.m.—Men's Prayer Break-
fast.
10:00 a.m. to 3:00 p.m.—HR Con-
ference Parish Education Workshop
Zion, Ann Arbor, for Sunday school
staff.
Sunday, Sept. 26—
9:00 a.m.—Sunday school.
10:15 a.m.—Worship.
Monday, Sept. 27—
7:00 p.m.—Junior Choir.
8:00 p.m.—Senior Choir.
Tuesday, Sept. 28—
7:30 p.m.—Beginning shuffle-
board. M. Prinzing and E. Heller
are captains.

NORTH LAKE
UNITED METHODIST CHURCH
The Rev. David Stiles, Pastor
Every Sunday—
8:30 and 10:00 a.m.—Worship
service.

ST. JACOB EVANGELICAL
LUTHERAN CHURCH
12501 Riethmiller Rd., Grass Lake
The Rev. Andrew Bloom, Pastor
Every Sunday—
9:00 a.m.—Worship service.
10:15 a.m.—Divine services.

ST. JOHN'S EVANGELICAL
AND REFORMED CHURCH
(United Church of Christ)
Francisco
The Rev. Virgil King, Pastor.
Every Sunday—
10:30 a.m.—Church services.

CHURCH OF CHRIST
13861 Old US-12 East
Evangelist John M. Hamilton
Every Sunday—
10:00 a.m.—Church school.
11:00 a.m.—Worship service.
Nursery will be available.
8:00 p.m.—Worship service.
Every Wednesday—
7:30 p.m.—Bible study.

FIRST UNITED
PRESBYTERIAN CHURCH
Ungdilla
The Rev. T. H. Liang, Pastor
Every Sunday—
9:45 a.m.—Sunday school.
11:00 a.m.—Worship service.

WATERLOO VILLAGE
UNITED METHODIST CHURCH
8118 Washington St.
The Rev. Glenn Kjellberg, Pastor
Every Sunday—
10:00 a.m.—Sunday school.
11:15 a.m.—Worship service.

METHODIST HOME CHAPEL
Chaplain Ira Wood, Pastor
Every Sunday—
8:45 a.m.—Worship service.

FIRST CHURCH OF CHRIST SCIENTIST

1883 Washtenaw Ave., Ann Arbor
Every Sunday—
10:30 a.m.—Sunday school, morn-
ing service.

FIRST UNITED
METHODIST CHURCH
The Rev. Marvin H. McCallum,
Pastor

Thursday, Sept. 23—
9:00 a.m.—Literature Group plan-
ning meeting in the Litteral Room.
8:00 p.m.—Every Member Visita-
tion Committee meeting in the Ed-
ucational Unit.
Sunday, Sept. 26—
10:00 a.m.—Worship service (nur-
sery provided).
10:20 a.m.—Church school for 4-
year-olds through 6th graders.
11:00 a.m.—Coffee and punch
hour.
11:10 a.m.—Senior High church
school in the Litteral Room.
Tuesday, Sept. 28—
9:30 a.m.—Charismatic Bible
Sharing Group in the Educational
Unit.
Wednesday, Sept. 29—
9:00 a.m. to 12:00 noon—Pretzel
Baking Workshop in the church
kitchen.

ST. MARY CATHOLIC CHURCH
The Rev. Fr. David Philip Dupuis
Pastor
Mass Schedule:
Every Saturday—
4:00-5:00 p.m.—Confessions.
7:00 p.m.—Mass.
Immediately after 7 p.m. Mass—
Confession.
Sunday, Sept. 26—
7:00 a.m.—Altar Society Com-
munion.
Every Sunday (summer schedule)—
7:00, 9:00, 11:00 a.m.—Mass.

ST. PAUL
UNITED CHURCH OF CHRIST
The Rev. R. J. Ratzlaff, Pastor
Thursday, Sept. 23—
6:30 p.m.—XYZ's pot-luck and
game night.
Saturday, Sept. 25—
9:00 a.m.—Confirmation, 8th
graders.
10:15 a.m.—Confirmation, 7th
graders.
Sunday, Sept. 26—
9:00 a.m.—Church school.
10:30 a.m.—Church school.
10:30 a.m.—Worship service.
Tuesday, Sept. 28—
3:45 p.m.—Joyful Noise.
Wednesday, Sept. 29—
Ann Arbor-Jackson Association
Women's Fellowship, St. Andrews,
Dexter.
3:45 p.m.—Junior Choir.
8:00 p.m.—Senior Choir. Courier
Mailings.

ST. THOMAS
EVANGELICAL LUTHERAN
Ellsworth and Haab Rds.
The Rev. Jerome Dykstra, Pastor
Thursday, Sept. 23—
7:30 p.m.—Adult Information
class.
Saturday, Sept. 25—
9:00 a.m.—Pre-Communion class.
Sunday, Sept. 26—
9:30 a.m.—Sunday school and
Bible class.
10:45 a.m.—Mission Festival
Service.
12:00 noon—Pot-luck dinner.

ST. JOHN'S
UNITED CHURCH OF CHRIST
Rogers Corners
Every Sunday—
10:30 a.m.—Worship service.

ST. BARNABAS
EPISCOPAL CHURCH
20500 Old US-12
The Rev. Fr. Jerrold F. Beaumont
B.S.P.

Every Sunday—
10:00 a.m.—Holy Communion
(first, third and fifth Sundays, and
1 p.m. every Wednesday).
10:00 a.m.—Morning prayer. Se-
cond and fourth Sundays. Church
school and nursery every Sunday.
Every Wednesday—
9:00 p.m.—Study and discussion
groups.
First Wednesday of every month
Bishop's Committee.
Third Thursday of every month—
Episcopal church women.

BETHEL EVANGELICAL AND
REFORMED CHURCH
(United Church of Christ)
Freedom Township
The Rev. Roman A. Rejneck,
Pastor
Every Sunday—
10:00 a.m.—Worship service.

CHELSEA BAPTIST CHURCH
377 Wilkinson St.
The Rev. James Stacey, Pastor
Every Sunday—
9:45 a.m.—Sunday school for the
whole family.
11:00 a.m.—Morning worship
service and children's church.
7:00 p.m.—Evening service, in-
formal singing, sharing, study and
discussion. (Nursery care provided
for all services).
Home Bible Studies each week
in the homes of the leaders.
Teen Ministry, Sunday at 6 p.m.
and study groups during the week.

GREGORY BAPTIST CHURCH
The Rev. Paul White, Pastor
Every Sunday—
9:45 a.m.—Sunday school.
11:00 a.m.—Morning worship.
8:00 p.m.—Young people.
7:00 p.m.—Thursday mid-week
worship service.

CONGREGATIONAL CHURCH
(United Church of Christ)
The Rev. Carl Schwarm, Pastor
Every Sunday—
10:30 a.m.—Worship and Sunday
school.

SALEM GROVE
UNITED METHODIST CHURCH
3320 Notten Rd.
The Rev. Gerald R. Parker
Pastor
Every Sunday—
9:30 a.m.—Sunday school.
10:30 a.m.—Worship service.

CHURCH OF JESUS CHRIST
OF LATTER-DAY SAINTS
Meetings at
St. Barnabas Episcopal Church
20500 Old US-12
Every Sunday—
11:00 a.m.—Priesthood meeting.
12:30 p.m.—Sunday school.

CIDER and APPLES

McIntosh, Jonathan, Grimes Golden, Golden Delicious

FARM PRODUCE

Come out and browse!

Peterson's Orchards

BRUIN LAKE, Bartlett at Hadley Rd., Gregory
OPEN 12 to 6 p.m.

PLAN TO ATTEND Dexter's Annual HOUSE TOUR FRIDAY, OCT. 15

5 area homes and the Dexter Museum
will be open.

Luncheon will be served at St. James Episcopal Church

Tickets available at

- ★ McLeod's Pharmacy
- ★ Ann Arbor Federal Savings & Loan
- ★ Dexter Library

\$2.50 House Tour - \$2.50 Luncheon

Sponsored by Friends of the Library and
Dexter Area Historical Society.

REGISTRATION NOTICE

FOR

GENERAL ELECTION

TUESDAY, NOVEMBER 2, 1976

To the Qualified Electors of the
TOWNSHIP OF DEXTER

(Precinct No. 1)

COUNTY OF WASHTENAW, STATE OF MICHIGAN

Notice is hereby given that in conformity with the "Michigan
Election Law," I, the undersigned Clerk, will, upon any day, except
Sunday and a legal holiday, the day of any regular or special election
or primary election, receive for registration the name of any legal
voter in said Township, City or Village not already registered who may
APPLY TO ME PERSONALLY for such registration.

Notice is Hereby Given that I will be at my home,
any day, by appointment, phone 475-7271.

Notice is Hereby Given That I Will Be at My Office

Monday, Oct. 4, 1976 - Last Day

From 8 o'clock a.m. until 8 o'clock p.m.

THE 30th DAY PRECEDING SAID ELECTION

And on Saturday, October 2, 1976 - 8 a.m. to 5 p.m.

As provided by Section 498, Act No. 116, Public Acts of 1954

As Amended.

For the purpose of REVIEWING the REGISTRATION and REGISTER-
ING such of the qualified electors in said TOWNSHIP, CITY or
VILLAGE as SHALL PROPERLY apply therefor.

The name of no person but an ACTUAL RESIDENT of the
precinct at the time of registration, and entitled under the Consti-
tution, if remaining such resident, to vote at the next election, shall be
entered in the registration book.

Elector Unable To Make Personal Application, Procedure

SEC. 504. Any elector who is unable to make personal applica-
tion for registration because of physical disability or absence from the
Township, City or Village in which his legal residence is located, may
be registered prior to the close of registration before any election or
primary election by securing from the Clerk of the Township, City or
Village in which is located his legal residence, duplicate registration
cards and executing in duplicate the registration affidavit before a notary
public or other officer legally authorized to administer oaths and
returning such registration cards to the Clerk of the Township, City or
Village before the close of office hours on the last day of registration
prior to any election or primary election. The notary public or other officer
administering the oath shall sign his name on the line for the
signature of the registration officer and designate his title.

Unregistered Persons Not Entitled To Vote

SEC. 491. The inspectors of election at any election or primary
election in this State, or in any District, County, Township, City or
Village thereof, shall not receive the vote of any person whose name
is not registered in the registration book of the Township, Ward or
Precinct in which he offers to vote. (As provided under Act 116,
P. A. 1954.)

Transfer of Registration on Election Day

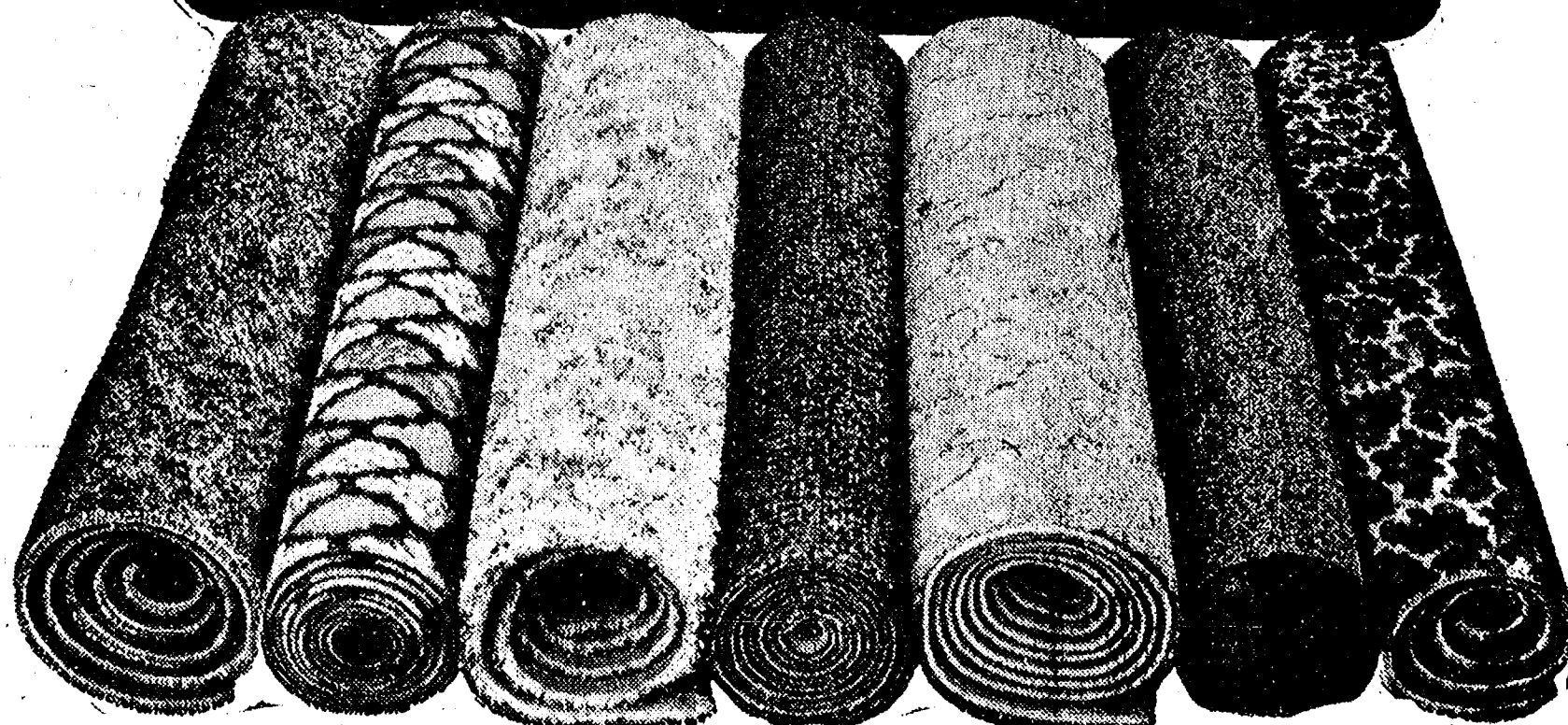
SEC. 506. Any registered elector may upon change of resi-
dence within the Township, City or Village cause his registration to be
transferred to his new address by sending to the Clerk a signed request,
stating his present address, the date he moved thereto, and the address
from which he was last registered, or by applying in person for a
transfer. The Clerk shall strike through the last address, ward and
precinct number and record the new address, ward and precinct
number on the original and duplicate registration cards, and shall
place the original registration card in proper precinct file. Such
transfers shall not be made after the Fifth Friday preceding any
election or primary election (unless such Fifth Friday shall fall on a
legal holiday in which event registration shall be accepted during the
next full working day).

Transfer of Registration, Application, Time

SEC. 507. Any registered elector who has removed from one
election precinct of a Township, City or Village to another election
precinct of the same Township, City or Village and has not recorded
such removal with the local Clerk shall execute a transfer of registra-
tion request, listing the new residence address thereon over his signa-
ture, with the election board in the precinct in which he is registered
at the next ensuing primary or election. The inspector of election in
charge of the registration records shall compare the signature thereon
with the signature upon the applicant's registration record and, if the
signatures correspond, then the inspector shall certify such fact by
affixing his initials upon said request. The applicant for transfer, after
having signed an application to vote as provided in Section 523 of this
act, shall then be permitted to vote in such precinct for that primary
or election only. The application for transfer shall be filed with the
Township, City or Village Clerk who shall then transfer such voter's
registration in accordance with the application. When the name of any
street in a Township, City or Village has been changed, it shall be
the duty of the Township, City or Village Clerk to make the change
to show the proper name of street in the registration records, and it
shall not be necessary for the elector to change his registration with
respect thereto in order to be eligible to vote.

William Eisenbeiser, Township Clerk

CARPET SALE



SOLIDS, PATTERNS FOR OFFICE, SCHOOL, HOME

We have quite a bit of heavy-duty carpeting left over from an installa-
tion we did for the University of Michigan. Some of the carpeting
sold for \$14.95 . . . we just do not have the room to store it now. It is
priced to sell quickly. Rusts, browns, dark blues, patterns.

\$4.95 Sq. Yd. \$5.95 Sq. Yd. \$6.95 Sq. Yd. \$7.95 Sq. Yd.

Marked

HOME FURNISHINGS

CHELSEA STORE ONLY: Open Monday, Friday until 9:00. Phone 475-8621



Polly's MASTER
MARKETS

1101 M-52

CHELSEA, MICH.

(Corner M-52 and Old U.S. 12)

Supplement to Ann Arbor News, Chosen Standard

get to know us...

WE CAN HELP YOU SAVE ON YOUR FOOD BILL!

- ★ **QUALITY PRODUCE**
- ★ **QUALITY MEAT**
- ★ **COLD BEER & WINE**
- ★ **LOTTERY TICKETS**
- ★ **SIDES OF BEEF**
- ★ **FRUIT BASKETS**
- ★ **DRY CLEANING**
- ★ **PHOTO PROCESSING**
- ★ **VARIETY AT LOW PRICES**

Polly's MASTER MARKETS
1101 M-52
CHELSEA, MICH.
(Corner M-52 and Old U.S. 12)

We Reserve the Right
To Limit All Sale Items
To Reasonable Quantities

polly's on n. west ave. & spring arbor rd.
OPEN 24 HOURS
(EXCEPT SATURDAY MIDNITE 'TIL SUNDAY 8 a.m.)
all other polly's open
DAILY 8 a.m. TIL 10 p.m.
SUNDAY 9 a.m. TIL 9 p.m.

- POLLY PRIDE QUALITY
SIRLOIN TIP STEAK LB. **\$1.79**
POLLY PRIDE QUALITY HEEL
BONELESS ROUND ROAST LB. **\$1.19**
POLLY PRIDE QUALITY
GROUND BEEF ROUND LB. **99¢**
POLLY PRIDE QUALITY
BEEF CUBE STEAK LB. **\$1.59**
POLLY PRIDE QUALITY 3-LBS. or more
GROUND BEEF CHUCK LB. **89¢**
POLLY PRIDE QUALITY
BONELESS BEEF STEW LB. **\$1.29**
POLLY PRIDE QUALITY
BEEF SHORT RIBS LB. **69¢**



Polly's
LOW LOW PRICES

ADD UP TO

\$00.366
\$00.19 Pt
\$00.24 Gr
\$00.16 Pt
\$00.79 Mt
\$00.38
\$00.29 Gr
\$00.48 GR
\$00.76 Mt
\$00.21 Pt
\$00.09 Gr



- NEW YORK BRAND
CORNERED BEEF LB. **89¢**
FARMER PEET
BONANZA HAM LB. **\$1.59**
MIXED
FRYER PARTS LB. **49¢**

- LEAN & TENDER CUBED
PORK STEAK LB. **\$1.39**
POLLY PRIDE PORK
CITY CHICKEN LB. **\$1.39**
POLLY PRIDE BONELESS
PORK ROAST LB. **\$1.29**
PARTS MISSING
CORNISH HENS 14/16-oz. **99¢**
FRESH
FROZEN DUCKLINGS LB. **99¢**
FROZEN
STEWING HENS LB. **69¢**
FRESH FROZEN
TURBOT FILLETS LB. **99¢**
FRESH FROZEN
SOLE FILLETS LB. **89¢**
FRESH FROZEN
MONK FISH LB. **\$1.99**

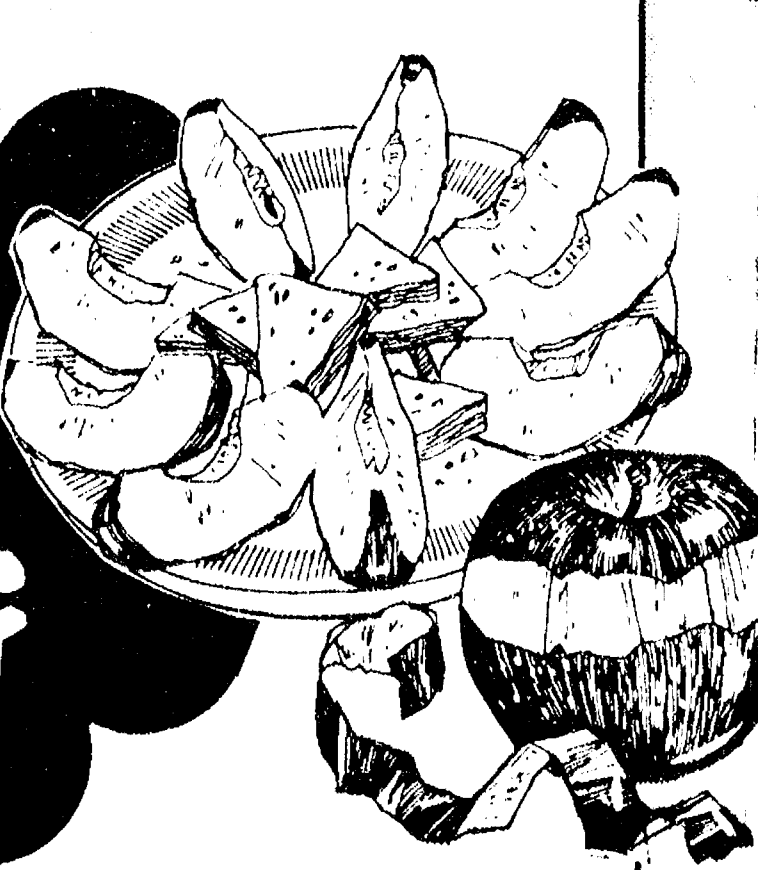
POLLY PRIDE QUALITY
ROUND STEAK
99¢
LB.

THE
LOWEST TOTAL
FOOD BILL!!

POLLY PRIDE QUALITY
Boneless RUMP ROAST
\$1.39
LB.

- FARMER PEET
RING BOLOGNA LB. **89¢**
FARMER PEET V.C.
SAUSAGE PATTIES LB. **\$1.09**
SWIFT PREMIUM
HAM PATTIES 21-OZ. CAN **\$1.99**
SWIFT SKINLESS
LINK SAUSAGE LB. **\$1.29**
HERRUD
FAMILY PAK 20-OZ. PKG. **\$1.19**
HERRUD POLISH or
SMOKED SAUSAGE 14-OZ. PKG. **\$1.19**
ECKRICH SMOKED or
POLISH SAUSAGE LB. **\$1.39**
ECKRICH
SMOKY LINKS 10-OZ. **99¢**
ECKRICH REGULAR or
BEEF FRANKS LB. **\$1.19**
ECKRICH
SMORGAS PAK LB. **\$1.69**
ECKRICH
SLICED BOLOGNA LB. **\$1.49**

U.S. NO. 1
Michigan McIntosh Apples
69¢
3-LB. BAG



SAVE 10¢ W/IN-STORE COUPON
U.S. NO. 1 WASHINGTON
RUSSET POTATOES 10-LB. BAG **\$1.19**

- HOME GROWN
CABBAGE LB. **12¢**
HOME GROWN
EGGPLANT LB. **29¢**
CALIFORNIA
PLUMS LB. **49¢**
JUICY
POMEGRANATES Ea. **29¢**

SAVE 30¢ W/IN-STORE COUPON
NEW CROP! THRIFTY
SPANISH PEANUTS 1-LB. BAG **69¢**



CLIP and SAVE
up to **\$10.61**

WITH POLLY'S IN-STORE and BONUS COUPONS





SAVE 70¢
w/ in-store coupon

GLAD LAWN BAGS

10-ct. Pkg. **\$1.29**

SAVE 16¢
w/ in-store coupon

KLEENEX FACIAL TISSUES

200-ct. Boxes **\$1**

VALUABLE COUPON

SAVE up to 60¢

POLLY'S QUALITY WHITE BREAD

3 20-oz. Loaves **79¢**

Limit 6 coupons per family
Expires 9-25-76

SAVE 50¢ with in-store coupon

PRESTONE II ANTIFREEZE

GALLON **\$3.49**

SAVE 20¢ with in-store coupon

P.D.Q. CHOCOLATE

10-oz. jar **63¢**

SAVE 30¢ with in-store coupon

SUE BEE HONEY

40-oz. Jar **\$1.89**

VALUABLE COUPON

SAVE 44¢

CANNED SHASTA POP

8 12-oz. cans **89¢**

Limit 8 Coupons Per Family
Expires 9/25/76

SAVE 40¢ with in-store coupon

MAXWELL HOUSE COFFEE

2-LB. CAN **\$3.49**

SAVE 26¢ with in-store coupon

SCOT LAD SLICED or HALVED PEACHES

15-oz. Cans **3 \$1**

<p>VANITY FAIR TOILET TISSUE 4-Roll Pak 69¢</p> <p>DOG FOOD 4 14-oz. cans \$1</p> <p>SMUCKER RASPBERRY PRESERVES 18-oz. 99¢</p> <p>CARNATION COFFEE MATE 16-oz. 99¢</p> <p>POWDERED SNOWY BLEACH 26-oz. 89¢</p> <p>WIN SCHULER BAR CHEESE 8-oz. 79¢</p> <p>KLEENEX BOUTIQUE TOILET TISSUE 4-Pak 69¢</p> <p>KLEENEX PAPER TOWELS Jumbo Roll 49¢</p> <p>HORMEL CHILI 15-oz. 49¢</p> <p>DINTY MOORE BEEF STEW 24-oz. 79¢</p> <p>3-DIAMOND PINEAPPLE 20-oz. 49¢</p> <p>KEEBLER ANIMAL CRACKERS 2 for 39¢</p> <p>GIANT RINSO 49-oz. 99¢</p> <p>EVAPORATED PET MILK 3 14-oz. cans \$1</p> <p>MOTT'S PRUNE JUICE 40-oz. 69¢</p> <p>KEN-L-RATION SPECIAL CUTS 24-oz. 99¢</p> <p>20¢ OFF DOVE for DISHES 32-oz. 99¢</p> <p>30¢ OFF ALL DETERGENT 157-oz. \$3.69</p> <p>SUNSHINE HI-HO'S 16-oz. 69¢</p> <p>SMUCKER'S GRAPE JELLY 32-oz. 93¢</p> <p>DUNCAN HINES CAKE MIX 19-oz. 59¢</p>	<p>SAVE 15¢ HARRISS APPLE PIE 10-in. Crown Deluxo Bake & Serve Pollys Limit 1 Expires 9/25/76</p> <p>SAVE 10¢ RICH'S COFFEE RICH 32-oz. Ctn. Coffee Cream Pollys Limit 1 Expires 9/25/76</p> <p>SAVE 25¢ BEN HILL GRIFFITH 3 12-oz. Cans Pollys Limit 3 Expires 9/25/76</p> <p>SAVE 15¢ PEPPER ORIENTAL 15-oz. Pkg. La Chey Pollys Limit 1 Expires 9/25/76</p> <p>SAVE 20¢ MORTON'S POT PIES 6 8-oz. Pkgs. Chicken, Turkey, Beef Pollys Limit 6 Expires 9/25/76</p> <p>SAVE 25¢ JOHN'S PIZZA 18-oz. Sausage Pizza Slices Pollys Limit 1 Expires 9/25/76</p> <p>SAVE 20¢ BANQUET BUFFET DINNER 32-oz. Pkg. Beef Stew or Salisbury Stk. Pollys Limit 1 Expires 9/25/76</p>	<p>SAVE 20¢ MORTON'S DONUTS Any 2 Pkgs. Seven Varieties Pollys Limit 2 Expires 9/25/76</p> <p>SAVE 25¢ FISH STICKS 2 16-oz. Pkg. Booth Heat 'n Eat Pollys Limit 2 Expires 9/25/76</p> <p>SAVE 10¢ CALIF. BLEND VEG 20-oz. Polybag Queen of Scot Pollys Limit 1 Expires 9/25/76</p> <p>SAVE 25¢ BANQUET DINNERS 3 11-oz. Pkgs. Your Choice Pollys Limit 3 Expires 9/25/76</p> <p>SAVE 15¢ COD FILLETS 12-oz. Pkg. Van-de-Kamp Batter Dipped Pollys Limit 1 Expires 9/25/76</p> <p>SAVE 20¢ K. K. FRENCH FRIES 5-lb. Polybag Scot Lad Pollys Limit 1 Expires 9/25/76</p> <p>SAVE 10¢ ORANGE JUICE 16-oz. Can Minute Maid Pollys Limit 1 Expires 9/25/76</p>
---	---	--

SECRET SPRAY DEODORANT 13-oz. **\$2.03**

SECRET POWDER DEODORANT 12-oz. **\$1.79**

VICKS COUGH DROPS Regular & Cherry 3 Pack **59¢** 59¢ Value

NEW LISTERMINT Tastes as good as it works 12 ounce **\$1.26** \$1.51 Value

20% FREE efferdent Bonus Pack 72's \$1.99 Value **\$1.39**

SINEX NASAL SPRAY 1/2 ounce **\$1.40** \$1.65 Value

VITALIS LIQUID 7 Ounce **\$1.49** \$1.88 Value

COLGATE DENTAL CREAM 10c Off 5 oz. **79¢** \$1.09 Value

SINE-AID 24 Tablets **\$1.21** \$1.49 Value

SHOWER TO SHOWER Deodorant Body Powder Regular & Herbal 8 Ounce **\$1.25** \$1.55 Value

TRAC II 9's **\$1.99**

TRAC II ADJUSTABLE 4's **\$1.09**

Look for Gillette World Series Display

AQUA VELVA Regular Herbal & Musk **\$1.11** \$2.19

BEN-GAY Regular & Greaseless 1.25 Ounce **\$1.12** \$1.39 Value

LECTRIC SHAVE 3 Ounce **86¢** \$1.14 Value

HEALTH AND BEAUTY AIDS

SCOPE MOUTHWASH 20c Off Label 18 oz. - \$1.93 Value **99¢** with in-store coupon

NEW BARE FACE ACNE SKIN MEDICINE Disappearing Foam Fights Blemishes Cleanses Oily Skin 2.8 oz. - \$2.49 Value **\$1.99**

EXCEDRIN 225 Tablets **\$3.65** \$4.25 Value

PROTEIN 21 HAIRSPRAY Regular, HTH Unscented 13 oz. - \$2.39 Value **\$1.79**

JERGENS LOTION & EXTRA DRY 10 Ounce **\$1.69** Value **\$1.31**

CREST TOOTHPASTE 10c Off Label 5 oz. Tube **59¢** with in-store coupon \$1.08 Value

RIGHT GUARD DEODORANT \$2.89 Value **\$1.99**

PRELL LIQUID CONCENTRATE 16 oz. \$2.74 Value **\$2.34**

When it's sinus/nasal congestion

Coricidin D 25 Tablets **\$1.68** \$1.89 Value



SAVE \$2.00

Austria email
1 QT. COVERED
SAUCEPAN

Regular
Price \$6.99
SALE PRICE \$4.99



SPECIAL OFFER

SAVE \$3.00

Austria email
3 QT. WHISTLING
TEA KETTLE

Regular
Price \$13.99
SALE PRICE \$10.99

SPECIAL OFFER PORCELAIN ENAMEL Austria email COOKWARE

Fresh as spring beauty in butterfly colors to brighten your kitchen • Heavy gauge steel for even cooking • Smooth, seamless, non-porous surface resists stains...chipping • Detergent and dishwasher safe • Stay bright finish cleans like fine china • Chip proof, stainless steel beaded rims • Snug fitting lids seal in moisture • Makes a perfect gift, too.

Item	Weeks On Sale	Regular Price	Sale Price
3 Qt. Whistling Tea Kettle	1-6	\$13.99	\$10.99
1 Qt. Covered Saucepan	1-6	6.99	4.99
2 Qt. Covered Casserole	2-7	8.99	6.99
9" Open Fry Pan	2-7	10.49	8.49
2 Qt. Covered Saucepan	3-8	9.99	7.99
5 Qt. Cov. Deep Stew Pot	3-8	11.99	9.99
3½ Qt. Covered Casserole	4-9	10.99	8.99
10" Covered Fry Pan	5-10	12.99	10.99

Watch our ads for weekly sale item



Polly's MASTER MARKETS

1101 M-52
CHELSEA, MICH.
(Corner M-52 and Old U.S. 12)

